



FLV Series Duplex Bag Filters

SINGLE LENGTH – 16" GFPP
1-1/4" TO 2" PIPE SIZES

KEY FEATURES

- Platinum Glass Filled Polypropylene
- One-Piece Injection Molded Construction
- Hand Removable, Ergonomic Cover with Liquid Displacing Dome
- Vent Valve Included on Cover
- Rated up to 100 GPM
- True Union Socket, Threaded or Flanged End Connections
- In-Line or Loop Flow Configurations
- Hinged Basket for Easy Bag Removal
- Drain Port at Bottom
- Integral Mounting Base

BENEFITS

- Easier Installations Due to True Union Connectivity
- Simplified Bag Removal from Hinged Basket
- Vertical Flow Flutes in Basket, No Bag Snag and More Flow Area

TYPICAL APPLICATIONS

- Water and Wastewater Treatment
- Chemical Processing
- Food and Beverage
- Metal Plating
- Aquatic and Animal Life Support Systems
- Water/Theme Parks
- Aquaculture

OPTIONS

- Gauge with Gauge Guard
- Pressure Differential Gauge and Switch
- EPDM O-Ring Seals
- Cartridge Adapters

MATERIALS

- CPVC Cell Class 23447 per ASTM D1784
- GFPP Cell Class 85580 per ASTM D4101
- FPM Standard O-Ring Seals

TECHNICAL INFORMATION

SELECTION CHART

SIZE / BODY MATERIAL	END CONNECTIONS	PIPING SIZES	O-RING SEALS	PRESSURE RATING (BAR)
Single Length 7" x 16" GFPP	GFPP (Threaded and Flanged)	1-1/4" – 2" rated @ 100 GPM*	FPM or EPDM	150 PSI @ 70°F Non-Shock (10 Bar / 1 MPa @ 21°C)
	CPVC (Socket, Threaded or Flanged)			

* May be Limited by Pipe Size or Bag Choice

FLV Series Duplex Bag Filters

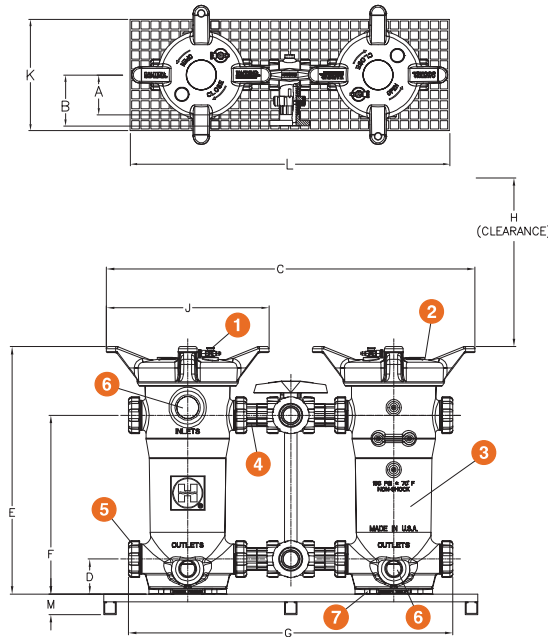
SINGLE LENGTH – 16" GFPP
1-1/4" TO 2" PIPE SIZES

TECHNICAL INFORMATION, CONTINUED

PARTS LIST*

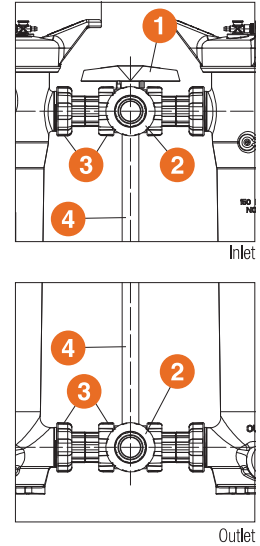
1. Vent Valve (Included)
2. Cover
3. Filter Vessel Body
4. End Connector
5. Assembly Nut
6. Alternate 2" NPT Ports
7. Integrally Molded Mounting Pad

* See page 8 for a complete Parts List



PIPING PARTS LIST

1. Handle
2. Hayward® LA Series Three-Way Lateral Valve
3. Spool Assembly (Each Side)
4. Stem Extension Pipe



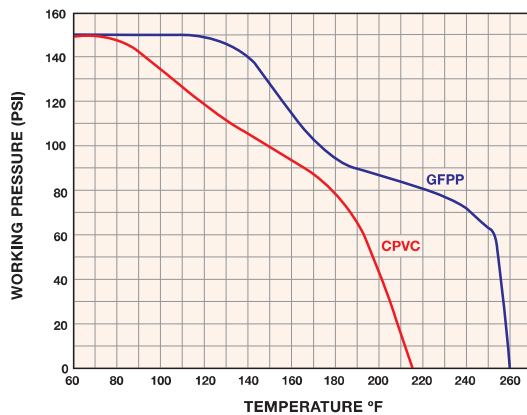
DIMENSIONS – INCHES / MILLIMETERS

VESSEL SIZE in / DN	A in / mm	B in / mm	C in / mm	D in / mm	E in / mm	F in / mm	G in / mm	H* in / mm	J in / mm	K in / mm	L in / mm	M in / mm
1-1/4" / 32	6.00 / 152	7.44 / 189	47.44 / 1205	4.50 / 114	31.83 / 808	23.00 / 584	41.70 / 1059	15.25 / 387	20.93 / 532	16.75 / 425	48.00 / 1219	2.62 / 67
1-1/2" / 40	6.00 / 152	7.60 / 193	47.44 / 1205	4.50 / 114	31.83 / 808	23.00 / 584	41.70 / 1059	15.25 / 387	20.93 / 532	16.75 / 425	48.00 / 1219	2.62 / 67
2" / 50	6.00 / 152	7.77 / 197	47.44 / 1205	4.50 / 114	31.83 / 808	23.00 / 584	41.70 / 1059	15.25 / 387	20.93 / 532	16.75 / 425	48.00 / 1219	2.62 / 67

Dimensions are subject to change without notice – consult factory for installation information

* Clearance from top for basket removal

OPERATING TEMPERATURE / PRESSURE



SPECIFICATIONS

- Material of Construction:** GFPP
- Inlet Connections:** GFPP (Threaded or Flanged)
CPVC (Socket, Threaded and Flanged)
- Outlet Connections:** GFPP (Threaded and Flanged)
CPVC (Socket, Threaded or Flanged)
- Bag Size:** Bag Size #1: 7" x 16"
- Pressure Rating:** 150 PSI @ 70°F Non-Shock
- O-Ring Seals:** FPM or EPDM
- Bag Ratings:** 1, 5, 10, 25, 50, 100, 150, 200, 400, 600 and 800 Microns
- Maximum Flow Rate:** 100 GPM (May be Limited by Pipe Size or Bag Choice)
- Mounting Base:** Fiberglass
- Hardware:** Stainless Steel
- Basket Open Area Ratios:** 19:1
- Weight:** 100.0 lbs.



Hayward is a registered trademark of Hayward Industries, Inc.
© 2012 Hayward Industries, Inc.