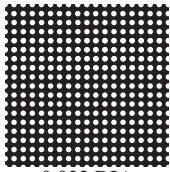


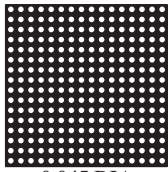
SCREEN OPTIONS

The screen or basket is the heart of the Keckley strainer. The media flows into the open end of the screen or basket and is strained as it passes through the screen towards the outlet. All particles larger than the screen opening are trapped inside. Screens are provided in perforated metal or wire mesh, depending on strainer size and/or material being strained. Only the best materials of the proper gauge to suit the service are used. All seams are spot welded for maximum strength. Double or reinforced screens are spot welded on the end peripheries as well as the seams. Reinforced screens consist of a perforated sheet lined with wire mesh. Keckley engineers have designed the screens to provide maximum total screen area.

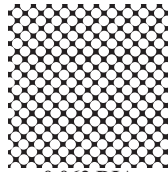
Perforated Sheet Metal Sizes



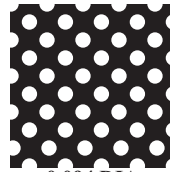
0.033 DIA
1/32" Approximately
331 Holes Per Sq. In.
29% Open Area



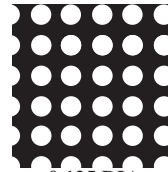
0.045 DIA
3/64" Approximately
225 Holes Per Sq. In.
33% Open Area



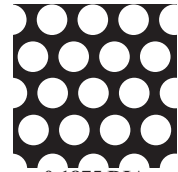
0.062 DIA
1/16" Approximately
98 Holes Per Sq. In.
30% Open Area



0.094 DIA
3/32" Approximately
51 Holes Per Sq. In.
36% Open Area

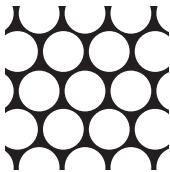


0.125 DIA
1/8" Approximately
29 Holes Per Sq. In.
43% Open Area

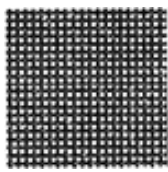


0.1875 DIA
3/16" Approximately
18 Holes Per Sq. In.
51% Open Area

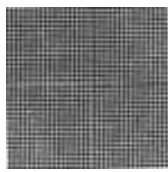
Mesh Sizes



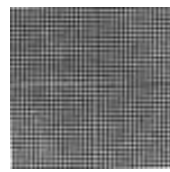
0.25 DIA
1/4" Approximately
12 Holes Per Sq. In.
58% Open Area



20 MESH
Wire Dia. 0.015
Opening 0.034
49% Open Area



30 MESH
Wire Dia. 0.011
Opening 0.021
45% Open Area



40 MESH
Wire Dia. 0.009
Opening 0.016
41% Open Area



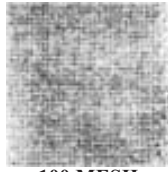
50 MESH
Wire Dia. 0.0085
Opening 0.011
33% Open Area



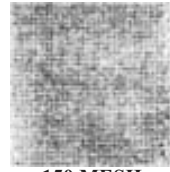
60 MESH
Wire Dia. 0.0065
Opening 0.010
38% Open Area



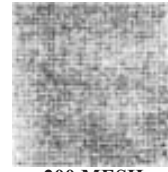
80 MESH
Wire Dia. 0.0055
Opening 0.0070
31% Open Area



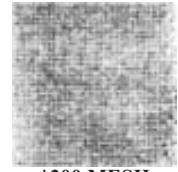
100 MESH
Wire Dia. 0.0045
Opening 0.0055
30% Open Area



150 MESH
Wire Dia. 0.0026
Opening 0.0041
37% Open Area



200 MESH
Wire Dia. 0.0021
Opening 0.0029
34% Open Area



***300 MESH**
Wire Dia. 0.0012
Opening 0.002
41% Open Area

*300 Mesh available in Duplex Strainers only.

Stainless steel screens are standard in all strainers except for Style F-300, E-300 and flanged bronze strainers; these strainers are supplied with brass screens. Other screen materials are available upon request (i.e. 316 SS, Monel, Hastelloy C276, Alloy 20, Duplex Stainless Steel, Titanium). In stainless steel, the smallest perforation obtainable is generally twice the thickness of the metal itself. Therefore, perforations from 0.033" through 0.250", dependent on metal thickness, are readily available. When extra fine straining is required of the larger strainers, reinforced screens consisting of a perforated sheet lined with wire mesh are recommended. This allows removal of fine particles with added durability.



Strainer Information

MAGNETS

Magnets can be provided as an option which, when placed inside the strainer screen, will remove very fine iron or steel particles present in fluid.

Magnets provide protection for equipment against abrasive damage.

| Strainer Size | Magnets required |
|-----------------|------------------|
| 2½" – 4" | 1 magnets |
| 5" – 6" | 2 magnets |
| 8" – 10" | 3 magnets |
| 12" – 14" | 4 magnets |
| 16" – 18" | 5 magnets |

*Sizes 2" and smaller strainers can be furnished with magnetic plugs.

REINFORCING BANDS

Reinforcing bands can be used to add additional strength and durability to the screens or baskets when straining conditions have higher than normal pressure drops.

DETERMINING NET FREE AREA RATIOS

To calculate the ratio, use the following formula:

Formula:

1. Choose the size perforation or mesh needed to remove particles from the media passing through the strainer.
2. Multiply the *TOTAL SCREEN AREA* by the *PERCENT OF OPEN AREA of the screen*. The result equals the *OPEN AREA of the screen*.
3. Divide the result (*OPEN AREA of the screen*) by the *INSIDE AREA of the pipe* to give the *ratio of net free area of the screen to the pipe*.

Example: (2" Style B screwed "Y" strainer with a 20 mesh 304 stainless steel screen)

$$\begin{array}{r}
 36.23 \text{ (total screen area in}^2\text{)} \\
 \times .49 \text{ (20 mesh = 49\% open area)} \\
 \hline
 17.753 \text{ (total open area of screen)}
 \end{array}$$

$$17.753'' / 3.356'' \text{ (inside area of 2'' pipe)} = 5.29:1$$

(RATIO OF NET FREE AREA OF THE SCREEN TO PIPE AREA)

| INSIDE AREA OF THE PIPE (in²) | | | | | | | |
|---|--------------------|--------|--------------------|------|--------------------|------|--------------------|
| Size | (in ²) | Size | (in ²) | Size | (in ²) | Size | (in ²) |
| 1/4" | 0.104 | 1-1/4" | 1.496 | 4" | 12.732 | 12" | 111.946 |
| 3/8" | 0.191 | 1-1/2" | 2.036 | 5" | 20.008 | 14" | 135.294 |
| 1/2" | 0.304 | 2" | 3.356 | 6" | 28.894 | 16" | 176.738 |
| 3/4" | 0.534 | 2-1/2" | 4.788 | 8" | 48.914 | 18" | 223.71 |
| 1" | 0.864 | 3" | 7.394 | 10" | 78.865 | 20" | 278.04 |

| Screen Opening Equivalents | | | | |
|-----------------------------------|----------------|-------------|---------|------------|
| Fractional Inches | Decimal Inches | Millimeters | Microns | Mesh |
| -- | 0.001 | -- | 25 | -- |
| -- | 0.0015 | -- | 37 | 400 |
| -- | 0.002 | -- | 50 | 300 |
| -- | 0.003 | -- | 75 | 200 |
| -- | 0.004 | 1/10 | 100 | 150 |
| -- | 0.005 | 1/8 | 125 | 115 |
| -- | 0.006 | -- | 149 | 100 |
| -- | 0.007 | -- | 177 | 80 |
| -- | 0.010 | 1/4 | 250 | 60 |
| -- | 0.011 | -- | 280 | 50 |
| -- | 0.016 | -- | 406 | 40 |
| -- | 0.020 | 1/2 | 500 | -- |
| -- | 0.021 | -- | 533 | 30 |
| -- | 0.030 | 3/4 | 750 | -- |
| 1/32 | 0.033 | -- | 838 | -- |
| -- | 0.034 | -- | 840 | 20 |
| -- | 0.039 | 1 | 1000 | 16 |
| 3/64 | 0.045 | -- | 1143 | -- |
| -- | 0.046 | -- | 1190 | 14 |
| -- | 0.055 | -- | 1410 | 12 |
| -- | 0.059 | 1-1/2 | 1500 | -- |
| 1/16 | 0.062 | -- | 1575 | -- |
| -- | 0.065 | -- | 1680 | 10 |
| -- | 0.079 | 2 | 2000 | 9 |
| -- | 0.093 | -- | 2380 | 8 |
| 3/32 | 0.094 | -- | 2388 | -- |
| -- | 0.110 | -- | 2790 | 7 |
| -- | 0.118 | 3 | 3000 | -- |
| 1/8 | 0.125 | -- | 3175 | -- |
| -- | 0.131 | -- | 3330 | 6 |
| -- | 0.156 | 4 | 4000 | 5 |
| -- | 0.185 | -- | 4700 | 4 |
| 3/16 | 0.1875 | -- | 4763 | -- |
| -- | 0.197 | 5 | 5000 | -- |
| -- | 0.236 | 6 | 6000 | -- |
| 1/4 | 0.250 | -- | 6350 | -- |
| -- | 0.263 | -- | 6700 | 3 |

Sizes in **bold red** are available from stock at Keckley Company. Consult Factory for the availability of other sizes including those not listed.

KECKLEY PIPELINE STRAINERS INSTALLATION AND MAINTENANCE

GENERAL

A Y-strainer can be installed in either a horizontal or vertical position (Downward flow) with the screen element pointing downward. This allows the strainer screen to collect material in the strainer at the lowest point of the screen.

Basket strainers are designed for installation in horizontal lines. They are commonly used for liquid service applications.

INSTALLATION

Carefully check all machined surfaces to make sure they are free of defects, and the inside of the strainer is free of foreign objects. All strainers should be installed with the arrow on the strainer body pointing in the direction of flow. For installation of threaded strainers an appropriate sealant should be used on the threads. For the installation of flanged strainers the flanged bolting should be tightened gradually going back and forth in a clockwise rotation until all bolts are tight. The system can now be pressurized gradually while checking for any leakage around all connections. If leakage occurs, depressurize the system and start the installation procedure over.

MAINTENANCE

WARNING

Before the removal or loosening of any bushing, cap, plug or cover on a strainer, extreme caution should be exercised to ensure there is zero pounds pressure in the system. Only after the system has been depressurized, should the strainer be drained for service.

***SERVICE ON A PRESSURIZED STRAINER CAN CAUSE
SERIOUS INJURY AND/OR PROPERTY DAMAGE.***

A Y-strainer screen can be cleaned by removing the plug in the bushing, cap or bolted cover allowing the strainer to drain the loose material inside the screen. If a blow-off valve is connected to the strainer it can be opened to achieve the same result as the above. The Y-strainer screen can also be cleaned by removing the bushing, cap or cover to access the screen element.

Basket strainers with a closed bottom basket can be cleaned by removing the cap or cover and pulling out the basket screen for service. If the strainer screen is bottomless (Style DV, BDV, SDV) the blow-off plug can be removed allowing it to be drained and cleaned like a Y-strainer.

Care should be taken in cleaning screens. After removing a screen, it should be soaked in a cleaning solution or cleaned by using a brush. Do not allow trapped material in the screen to harden, as it will be difficult to remove. A regular cleaning schedule is recommended to avoid screens from becoming clogged.

A pressure gauge installed before and after a strainer will indicate a pressure loss due to clogging. This can help in establishing a maintenance schedule for cleaning the strainer screen. Extra screens can be useful in keeping the system operating during the cleaning process.

Basket Strainer

Iron Body (ASTM A 126, CLASS B)

- Style D 250# Threaded 1/2" – 2" 2
- Style DV 250# Threaded 1/2" – 2" 2
- Technical Data..... 3

- Style KT-7 125# Threaded 3/8" – 3" 4
- Technical Data..... 5

- Style D 125# Flange 2" – 12" 6
- Style D 250# Flange 2" – 12" 6
- Style DV 125# Flange 2" – 12" 6
- Style DV 250# Flange 2" – 12" 6
- Technical Data..... 7

- Style GFV 125# Flange 2" – 16" 8
- Style GFV 250# Flange 2" – 6" 8
- Technical Data..... 9

- Style GFV-K 125# Flange 2" – 12" 10
- Technical Data..... 11

Ductile Iron Body (ASTM A 536, GRADE 65-45-12)

- Style KF-7 150# Flange 1 1/2" – 12" 12
- Technical Data..... 13

Bronze Body (ASTM B 62, C83600)

- Style BGFV 150# Flange 1 1/2" – 12" 14
- Style BGFV 300# Flange 1 1/2" – 12" 14
- Technical Data..... 15

Pressure Drop Charts

- Styles D, DV, BD, BDV, SD, SD-K, SSD, and SSD-K 28
- Styles GFV, HLC, BGFV, SGFV, SGFV-K, SSGFV, and SSGFV-K 29
- Styles BKF-7 and KF-7 30
- Style KT-7 31

Bronze Body (Cont.) (ASTM B 62, C83600)

- Style BD 125# Flange 2" – 12" 16
- Style BD 250# Flange 2" – 12" 16
- Style BDV 125# Flange 2" – 12" 16
- Style BDV 250# Flange 2" – 12" 16
- Technical Data..... 17

Nickel Aluminum Bronze Body (ASTM B 148, C95800)

- Style BKF-7 150# Flange 1 1/2" – 12" 18
- Technical Data..... 19

Carbon Steel Body (ASTM A 216, Grade WCB)

- Style SD 300# Threaded 3/8" – 3" 20
- Style SD-K 150# Threaded 3/8" – 3" 20
- Technical Data..... 21

- Style SGFV 150# Flange 2" – 14" 22
- Style SGFV-K 150# Flange 2" – 14" 22
- Style SGFV 300# Flange 2" – 14" 22
- Technical Data..... 23

316 Stainless Steel Body (ASTM A 351, GRADE CF8M)

- Style SSD 300# Threaded 3/8" – 3" 24
- Style SSD-K 150# Threaded 3/8" – 3" 24
- Technical Data..... 25

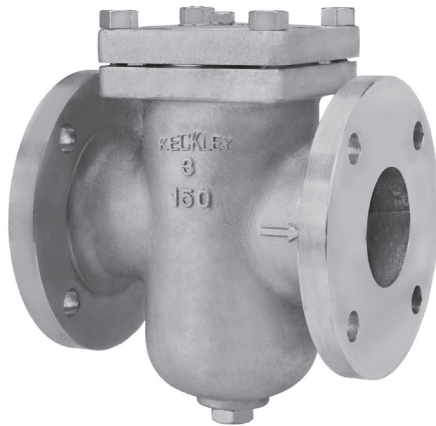
- Style SSGFV 150# Flange 2" – 14" 26
- Style SSGFV-K 150# Flange 2" – 14" 26
- Style SSGFV 300# Flange 2" – 14" 26
- Technical Data..... 27

Style BGFV

Basket Strainer

Cast Bronze (ASTM B 62, C83600)

150 lb. & 300 lb. Flanged



Cast Bronze Basket Strainer

APPLICATIONS

Steam, water, oil or gas where protection from foreign matter in a pipeline is required.

CONSTRUCTION

The Keckley Style BGFV strainers are constructed from rugged bronze castings that are machined to exacting specifications. These bodies have drilled flanges that are in accordance with ASME B16.24. All flanges come standard with back-faced bolt holes.

FEATURES

The Keckley Style BGFV strainers feature a basket with an angular cutaway design to allow straight through flow and extremely low pressure loss. All sizes have a bolted top cover flange for ease in basket removal. The gasket is spiral wound stainless steel and is compressed between the body and cover (for maximum strength and durability) and designed for high pressure and high temperature service. Keckley Style BGFV strainers have hex head cap screws and are furnished standard with a tapped and plugged NPT drain connection.

BASKETS

Standard baskets are 304 stainless steel and are spot welded for maximum strength. Different size perforations and meshes are available in stainless steel, monel, and brass to meet specific media requirements. If media is not indicated, screens for *water* will be supplied.

CLEANING

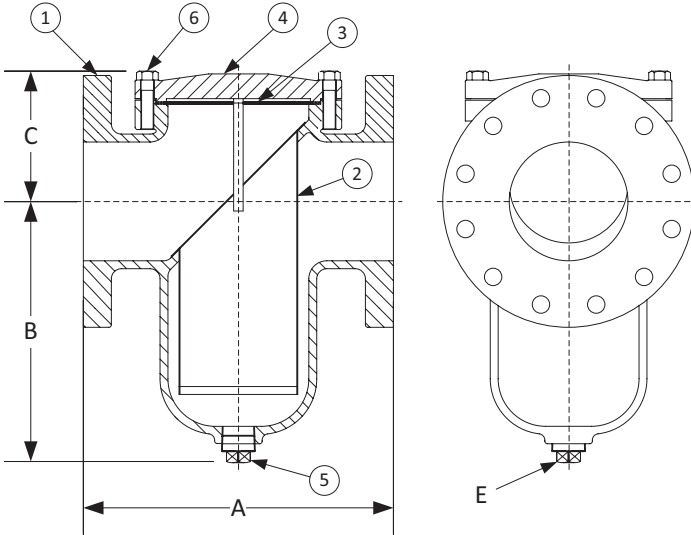
Cleaning of the Style BGFV strainer is accomplished by removing the cover and pulling out the basket. **Warning:** See Maintenance Instructions on page S6 of the Strainer Information Section for additional precautions and detailed information on servicing the strainer.

WORKING PRESSURES - NON SHOCK

| NOM. RATING | MEDIA | 1-1/2" to 12" | 40 mm to 300 mm |
|-------------------------------------|--------|-----------------|------------------|
| 150# F.F. & D (STANDARD FLANGE) | STEAM | 150 PSI @ 406°F | 1035 KPa @ 208°C |
| | W.O.G. | 225 PSI @ 150°F | 1552 KPa @ 66°C |
| NOM. RATING | MEDIA | 1-1/2" to 12" | 40 mm to 300 mm |
| 300# F.F. & D (EX. HEAVY FLANGE) | STEAM | 300 PSI @ 406°F | 2069 KPa @ 208°C |
| | W.O.G. | 500 PSI @ 150°F | 3449 KPa @ 66°C |

Style BGFV

Basket Strainer, 150 lb. & 300 lb. Flanged
Cast Bronze (ASTM B 62, C83600)



| PARTS LIST | | |
|------------|---------------------|------------------------------------|
| ITEM | DESCRIPTION | MATERIAL |
| 1 | Body | Cast Bronze (ASTM B 62, C83600) |
| 2 | Basket | Stainless Steel (304) |
| 3 | Gasket | Spiral Wound Stainless Steel (304) |
| 4 | Cover | Cast Bronze (ASTM B 62, C83600) |
| 5 | Pipe Plug | Stainless Steel (316) |
| 6 | Hex Head Cap Screws | Stainless Steel (316) |

| STANDARD SCREENS SUPPLIED | | | | | | | | | |
|---------------------------|----------|-------------|--------------------|-----|-----------|-------------|-------------|-----|-----------|
| SIZE | | SCREEN GAGE | SCREEN PERFORMANCE | | | | FOR LIQ-UID | | |
| | | | FOR STEAM | | OPEN AREA | FOR LIQ-UID | | | |
| in | mm | in | mm | in | | mm | in | mm | OPEN AREA |
| 1-1/2 to 3 | 40 to 80 | 22 | 3/64 | 1.2 | 33% | 1/16 | 1.6 | 30% | |

Standard screens supplied are for **liquid service**, unless otherwise specified.
Options: Other meshes, perforations, and screen materials are available.

| SIZE | | DIMENSIONS | | | | | | | | | | | | | | | |
|-------|-----|------------|-----|---------|-----|----------|-----|----------|-----|--------|-----|--------|-----|-------|----|-------|----|
| | | A | | | | B | | | | C | | | | E | | | |
| | | 150# | | 300# | | 150# | | 300# | | 150# | | 300# | | 150# | | 300# | |
| in | mm | in | mm | in | mm | in | mm | in | mm | in | mm | in | mm | in | mm | in | mm |
| 1-1/2 | 40 | 6-1/2 | 165 | 7 | 178 | 1-1/2 | 38 | 4 | 102 | 4 | 102 | 3-3/4 | 95 | 1/2 | 15 | 1/2 | 15 |
| 2 | 50 | 8-1/2 | 216 | 8-13/16 | 224 | 5-7/8 | 149 | 4-3/4 | 121 | 4-3/4 | 121 | 3-3/4 | 95 | 1/2 | 15 | 1 | 25 |
| 2-1/2 | 65 | 8 | 203 | 9 | 229 | 5-7/16 | 138 | 5-5/8 | 143 | 4-1/4 | 108 | 4-5/8 | 117 | 3/4 | 20 | 1 | 25 |
| 3 | 80 | 8-3/4 | 222 | 10-1/16 | 256 | 5-11/16 | 144 | 5-11/16 | 144 | 5-5/8 | 143 | 5-5/8 | 143 | 3/4 | 20 | 3/4 | 20 |
| 4 | 100 | 11-3/16 | 284 | 12 | 305 | 8-1/4 | 210 | 8-1/4 | 210 | 6-1/16 | 154 | 6-1/16 | 154 | 1 | 25 | 1 | 25 |
| 5 | 125 | 12-1/4 | 311 | 13-1/8 | 333 | 10-1/4 | 260 | 10-1/4 | 260 | 5-5/8 | 143 | 5-5/8 | 143 | 1 | 25 | 1 | 25 |
| 6 | 150 | 13-7/8 | 352 | 15-9/16 | 395 | 12-13/64 | 310 | 12-13/64 | 310 | 6-5/16 | 149 | 6-5/16 | 160 | 1-1/4 | 32 | 1-1/4 | 32 |
| 8 | 200 | 17-3/8 | 441 | 18-7/8 | 479 | 15-9/16 | 395 | 15-9/16 | 395 | 8-3/16 | 208 | 8-3/16 | 208 | 1-1/2 | 40 | 1-1/4 | 40 |
| 10 | 250 | 22 | 559 | 21-5/16 | 541 | 16 | 406 | 14-3/8 | 365 | 10-3/8 | 264 | 9-7/8 | 251 | 1-1/2 | 40 | 2 | 50 |
| 12 | 300 | 25 | 635 | 25-3/8 | 645 | 23-3/4 | 603 | 23-3/4 | 603 | 12-3/8 | 314 | 12-3/8 | 314 | 2 | 50 | 2 | 50 |

Consult factory for sizes not shown.

Certified dimensional drawings are available upon request.

*This table reflects only the nearest metric equivalents.

| Size | | WEIGHTS | | | | | | | | | |
|------|-----|---------|----|----|----|----|-----|-----|-----|-----|-----|
| | | 2" | 3" | 4" | 5" | 6" | 8" | 10" | 12" | | |
| 150 | lbs | 22 | 31 | 34 | 42 | 68 | 115 | 115 | 245 | 399 | 450 |
| | kgs | 10 | 14 | 15 | 19 | 31 | 52 | 52 | 111 | 181 | 204 |
| 300 | lbs | 24 | 32 | 42 | 56 | 88 | 126 | 150 | 295 | 420 | 500 |
| | kgs | 11 | 15 | 19 | 25 | 40 | 57 | 68 | 134 | 191 | 227 |

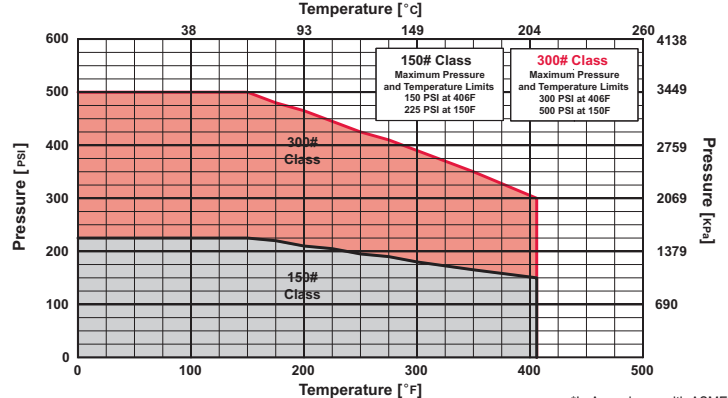
| FLOW COEFFICIENTS | | | | | |
|-------------------|----------------|------|----------------|------|----------------|
| Size | C _v | Size | C _v | Size | C _v |
| 1-1/2" | 32 | 3" | 120.2 | 6" | 743.1 |
| 2" | 42.7 | 4" | 276.7 | 8" | 1486.3 |
| 2-1/2" | 84 | 5" | 442.7 | 10" | 3051.6 |

| TOTAL SCREEN AREA | | | | | |
|-------------------|--------------------|------|--------------------|------|--------------------|
| Size | (in ²) | Size | (in ²) | Size | (in ²) |
| 1-1/2" | 20.10 | 3" | 54.53 | 6" | 215.65 |
| 2" | 53.42 | 4" | 117.94 | 8" | 401.76 |
| 2-1/2" | 45.72 | 5" | 129.00 | 10" | 591.73 |

*See DETERMINING RATIOS on page S5 of the Strainer Information Section for calculating NET FREE AREA of the screen to inside pipe area.

PRESSURE vs. TEMPERATURE CHART

150# & 300# Flanged Cast Bronze (ASTM B 62, C83600)



*In Accordance with ASME B16.24

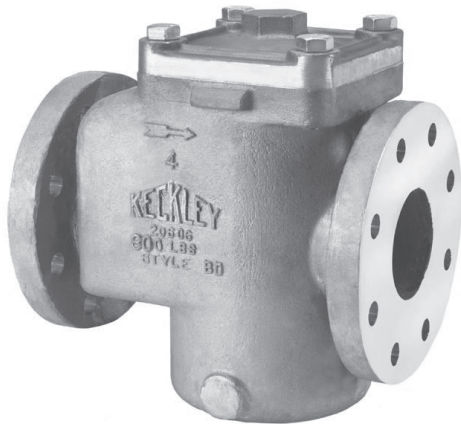
Style BD & BDV

Basket Strainer

Cast Bronze (ASTM B 62, C83600)

150 lb. & 300 lb. Flanged

Cast Bronze Basket Strainer



APPLICATIONS

Steam, water, oil or gas where protection from foreign matter in a pipeline is required.

CONSTRUCTION

The Keckley Style BD & BDV strainers are constructed from rugged cast bronze castings that are machined to exacting specifications. These bodies have drilled flanges that are in accordance with ASME B16.24.

FEATURES

The Keckley Style BD & BDV strainers feature a machined basket seat to minimize particle bypass. All sizes have a bolted top cover flange for ease in basket removal. The gasket is a synthetic fiber gasket is compressed between the body and cover for maximum strength and durability. All Keckley Style BD & BDV strainers are furnished standard with a tapped and plugged NPT drain connection.

BASKETS

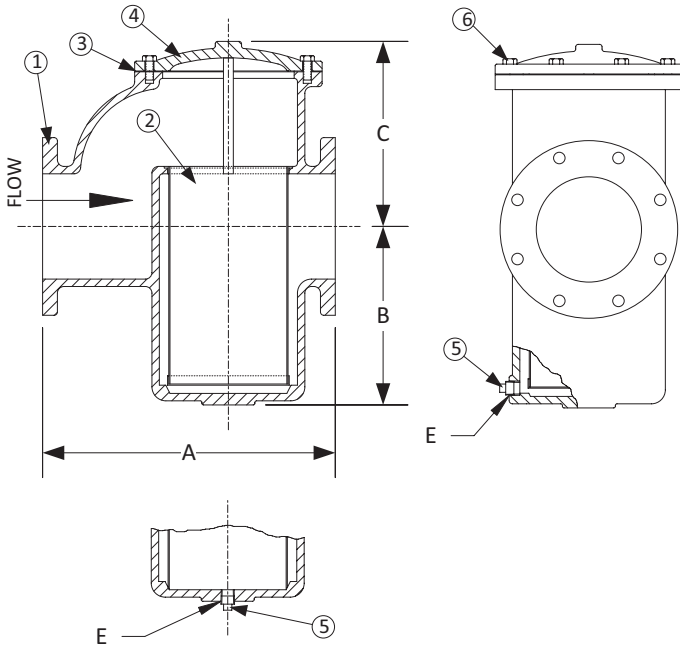
Standard baskets are 304 stainless steel and are spot welded for maximum strength. Different size perforations and meshes are available in stainless steel, monel, and brass to meet specific media requirements. If media is not indicated, screens for *water* will be supplied.

CLEANING

Cleaning of the Style BD strainer is accomplished by removing the cover and pulling out the basket. The Style BDV basket has an open bottom and is cleaned by blowing trapped material out through the blow-off connection similar to a “Y” type strainer. **Warning:** See Maintenance Instructions on page S6 of the Strainer Information Section for additional precautions and detailed information on servicing the strainer.

WORKING PRESSURES - NON SHOCK

| NOM. RATING | MEDIA | 2" to 12" | 50 mm to 300 mm |
|-------------------------------------|--------|-----------------|------------------|
| 150# F.F. & D (STANDARD FLANGE) | STEAM | 150 PSI @ 406°F | 1035 KPa @ 208°C |
| | W.O.G. | 225 PSI @ 150°F | 1552 KPa @ 66°C |
| NOM. RATING | MEDIA | 2" to 12" | 50 mm to 300 mm |
| 300# F.F. & D (EX. HEAVY FLANGE) | STEAM | 300 PSI @ 406°F | 2069 KPa @ 208°C |
| | W.O.G. | 500 PSI @ 150°F | 3449 KPa @ 66°C |



Style BDV has a bottom blow off with an open bottom basket.

Style BD & BDV

Basket Strainer, 150 lb. & 300 lb. Flanged
Cast Bronze (ASTM B 62, C83600)

| PARTS LIST | | |
|------------|---------------------|---------------------------------|
| ITEM | DESCRIPTION | MATERIAL |
| 1 | Body | Cast Bronze (ASTM B 62, C83600) |
| 2 | Basket | Stainless Steel (304) |
| 3 | Gasket | Composition |
| 4 | Cover | Cast Bronze (ASTM B 62, C83600) |
| 5 | Pipe Plug | Brass |
| 6 | Hex Head Cap Screws | Steel |

| STANDARD SCREENS SUPPLIED | | | | | | | | |
|---------------------------|------------|-------------|--------------------|-----|-----------|-------------|-----|-----------|
| SIZE | | SCREEN GAGE | SCREEN PERFORMANCE | | | | | |
| in | mm | | FOR STEAM | | OPEN AREA | FOR LIQ-UID | | OPEN AREA |
| | | | in | mm | | in | mm | |
| 2 to 5 | 50 to 125 | 28 | 1/16 | 1.6 | 30% | 1/8 | 3.2 | 43% |
| 6 to 8 | 150 to 200 | 24 | 1/8 | 3.2 | 43% | 1/8 | 3.2 | 43% |

Standard screens supplied are for **liquid service**, unless otherwise specified. Options: Other meshes, perforations, and screen materials are available.

| SIZE | | DIMENSIONS | | | | | | | | | | WEIGHTS | | | |
|-------|-----|------------|------|-------------|-------------|-------------|-------------|-------|------|------|-----|---------|-----|------|-----|
| | | A | | B | | C | | E | | 150# | | 300# | | | |
| | | 150# | 300# | 150# & 300# | 150# & 300# | 150# & 300# | 150# & 300# | 150# | 300# | lbs | kgs | lbs | kgs | | |
| in | mm | in | mm | in | mm | in | mm | in | mm | in | mm | lbs | kgs | lbs | kgs |
| 2 | 50 | 7-3/4 | 197 | 8-1/4 | 210 | 3-15/16 | 100 | 5-1/4 | 133 | 1/2 | 15 | 27 | 12 | 33 | 15 |
| 2-1/2 | 65 | 8-3/4 | 222 | 9-1/4 | 235 | 4 | 102 | 6 | 152 | 1/2 | 15 | 38 | 17 | 47 | 21 |
| 3 | 80 | 9-3/4 | 248 | 10-5/16 | 262 | 5 | 127 | 7 | 178 | 1/2 | 15 | 52 | 24 | 63 | 29 |
| 4 | 100 | 12-3/4 | 324 | 13-1/2 | 343 | 6-3/4 | 171 | 9-1/2 | 241 | 1/2 | 15 | 135 | 61 | 142 | 64 |
| 5 | 125 | 16-1/2 | 419 | 17-1/4 | 438 | 9-7/8 | 251 | 12 | 305 | 3/4 | 20 | 193 | 88 | 228 | 103 |
| 6 | 150 | 16-5/8 | 422 | 17-3/8 | 441 | 9-7/8 | 251 | 12 | 305 | 3/4 | 20 | 201 | 91 | 243 | 110 |
| 8 | 200 | 21-5/8 | 549 | 22-1/2 | 572 | 13-3/4 | 349 | 14 | 356 | 3/4 | 20 | 397 | 180 | 472 | 214 |
| 10 | 250 | 25-5/8 | 651 | 29-3/4 | 756 | 17 | 432 | 18 | 457 | 3/4 | 20 | 791 | 359 | 860 | 390 |
| 12 | 300 | 29-5/8 | 752 | 31-5/8 | 803 | 20-5/8 | 524 | 21 | 533 | 2 | 50 | 1305 | 592 | 1478 | 670 |

Certified dimensional drawings are available upon request.

†This table reflects only the nearest metric equivalents.

FLOW COEFFICIENTS

| Size | C _v | Size | C _v | Size | C _v |
|--------|----------------|------|----------------|------|----------------|
| 2" | 55.7 | 4" | 208.7 | 8" | 784.3 |
| 2-1/2" | 88.5 | 5" | 354.2 | 10" | 1208.0 |
| 3" | 123.3 | 6" | 430.1 | 12" | 1868.9 |

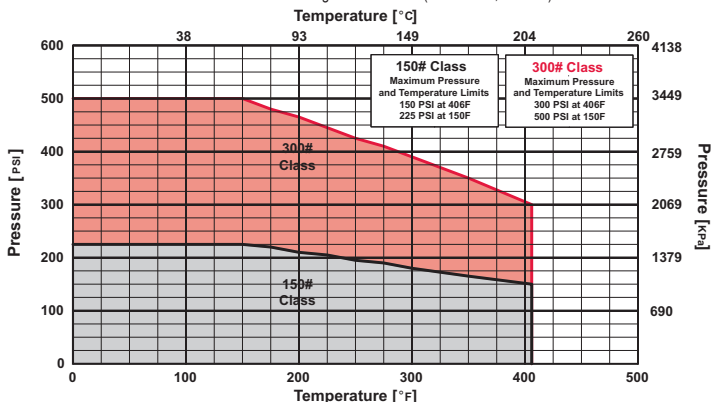
TOTAL SCREEN AREA

| Size | (in ²) | Size | (in ²) | Size | (in ²) |
|--------|--------------------|------|--------------------|------|--------------------|
| 2" | 39.45 | 4" | 152.58 | 8" | 529.98 |
| 2-1/2" | 51.66 | 5" | 295.54 | 10" | 808.58 |
| 3" | 84.84 | 6" | 295.54 | 12" | 1252.0 |

*See DETERMINING RATIOS on page S5 of the Strainer Information Section for calculating NET FREE AREA of the screen to inside pipe area.

PRESSURE vs. TEMPERATURE CHART

150# & 300# Flanged Cast Bronze (ASTM B 62, C83600)



*In Accordance with ASME B16.24

Style BKF-7

Basket Strainer

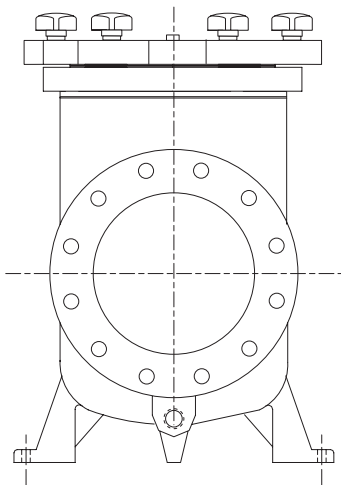
Nickel Aluminum Bronze

(ASTM B 148, C95800)

150 lb. Flanged



Sizes 1½" to 8"



Sizes 10" & 12"

Cast Nickel Aluminum Bronze Basket Strainer

APPLICATIONS

Water, oil or gas where protection from foreign matter in a pipeline is required.

CONSTRUCTION

The Keckley Style BKF-7 strainers are constructed from rugged cast nickel aluminum bronze castings and are machined to exacting specifications. These bodies have drilled flanges that are in accordance with ASME B16.24.

FEATURES

The Keckley Style BKF-7 strainers feature a machined basket seat to minimize particle bypass. All sizes have knob type fasteners securing the cover flange for tool free ease in basket removal. The Keckley Style BKF-7 features a Buna-N o-ring that is compressed between the body and cover for maximum strength and durability and is limited to 150°F. All Keckley Style BKF-7 strainers are furnished standard with a tapped and plugged NPT connection.

BASKETS

Standard baskets are 304 stainless steel and are spot welded for maximum strength. Different size perforations and meshes are available in stainless steel, monel, and brass to meet specific media requirements.

CLEANING

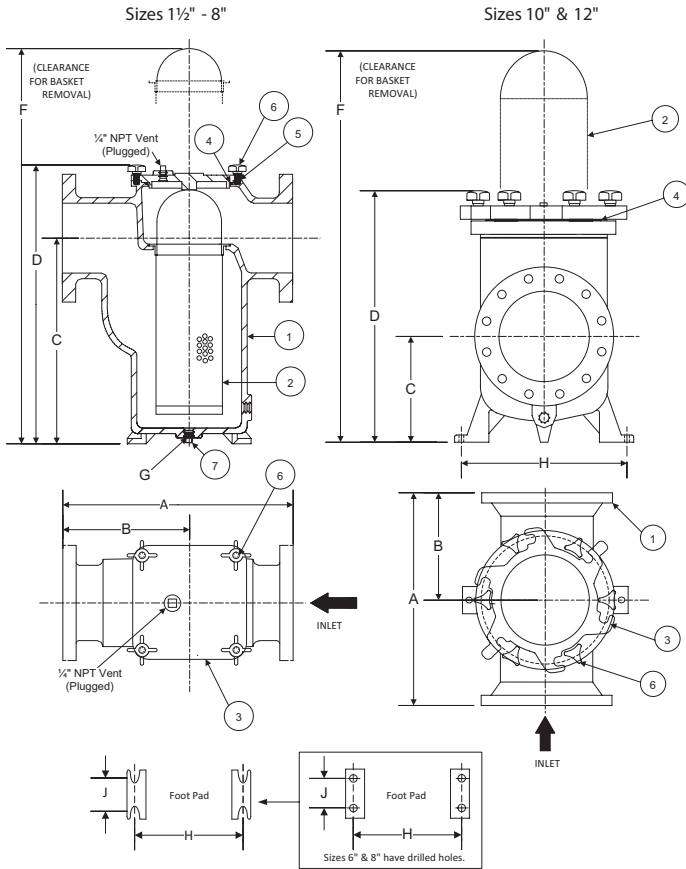
Cleaning of the Style BKF-7 strainer is accomplished by removing the cover and pulling out the basket. **Warning:** See Maintenance Instructions on page S6 of the Strainer Information Section for additional precautions and detailed information on servicing the strainer.

WORKING PRESSURES - NON SHOCK

| NOM. RATING | MEDIA | 1-1/2" to 12" | 40 mm to 300 mm |
|-------------------------------------|--------|-----------------|-----------------|
| 150# F.F. & D. (STANDARD FLANGE) | W.O.G. | 200 PSI @ 100°F | 1379 KPa @ 38°C |

Style BKF-7

Basket Strainer, 150 lb. Flanged
Nickel Aluminum Bronze (ASTM B 148, C95800)



PARTS LIST

| ITEM | DESCRIPTION | MATERIAL |
|------|-------------|---|
| 1 | Body | Nickel Aluminum Bronze (ASTM B 148, C95800) |
| 2* | Basket | Stainless Steel (304) |
| 3† | Cover | Nickel Aluminum Bronze (ASTM B 148, C95800) |
| 4 | O-ring | Buna-N (Max Temperature 150°F) |
| 5 | Stud | Carbon Steel (ASTM A 193, Grade B7) |
| 6 | Knob | Stainless Steel |
| 7 | Body Plug | Brass |

*Denotes Spare Parts.

†Sizes 6" and larger are furnished with round covers.

STANDARD SCREENS SUPPLIED

| SIZE | | SCREEN GAGE | SCREEN PERFORATION FOR LIQUID | | OPEN AREA |
|-------------|-----------|-------------|-------------------------------|-----|-----------|
| in | mm | | in | mm | |
| 1-1/2 to 12 | 40 to 300 | 28 - 24 | 1/8 | 3.2 | 43% |

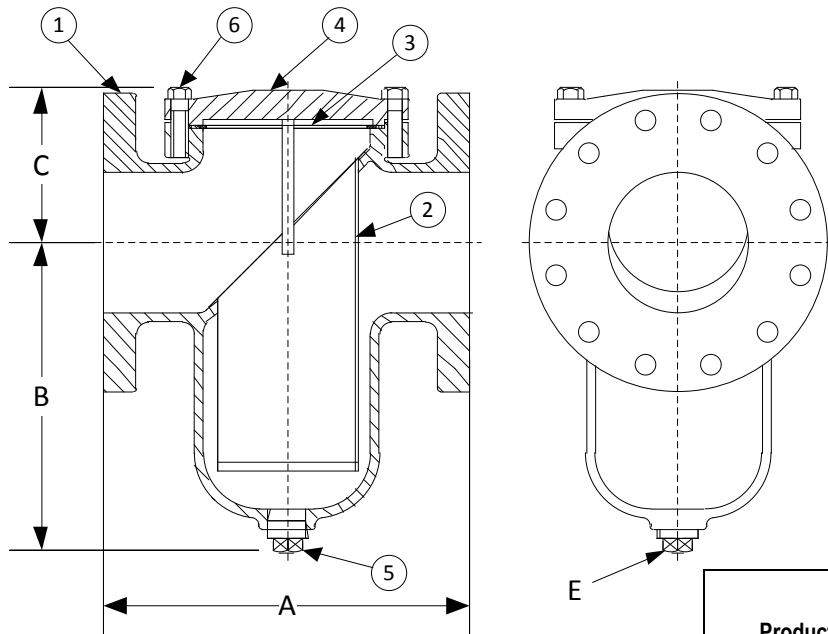
Options: Other meshes, perforations, and screen materials are available.

| Pipe Size | | DIMENSION | | | | | | | | | | | | | |
|-----------|-----|-----------|-----|-------|-----|-------|-----|--------|-----|----|------|-----|----|-------|-----|
| | | A | | B | | C | | D | | F | | G | | H | |
| in | mm | in | mm | in | mm | in | mm | in | mm | in | mm | in | mm | in | mm |
| 1-1/2 | 40 | 10.25 | 260 | 5.63 | 143 | 7.00 | 178 | 11.00 | 279 | 16 | 406 | 1/4 | 8 | 5.5 | 140 |
| 2 | 50 | 10.50 | 267 | 5.75 | 146 | 6.63 | 168 | 10.25 | 260 | 20 | 508 | 1/2 | 15 | 5.5 | 140 |
| 2-1/2 | 65 | 11.63 | 295 | 6.63 | 168 | 7.88 | 200 | 11.88 | 302 | 23 | 584 | 3/8 | 10 | 6.5 | 165 |
| 3 | 80 | 13.13 | 334 | 7.25 | 184 | 9.25 | 235 | 13.75 | 349 | 27 | 686 | 3/8 | 10 | 7.0 | 178 |
| 4 | 100 | 16.75 | 426 | 9.38 | 238 | 9.00 | 229 | 14.75 | 375 | 29 | 737 | 1/2 | 15 | 10.00 | 254 |
| 6 | 150 | 19.63 | 499 | 10.81 | 275 | 15.75 | 400 | 24.00 | 610 | 46 | 1168 | 1/2 | 15 | 10.00 | 254 |
| 8 | 200 | 27 | 686 | 16.00 | 406 | 27.00 | 686 | 36.187 | 919 | 61 | 1549 | 1/2 | 15 | 15.75 | 400 |
| 10 | 250 | 23 | 584 | 11.00 | 279 | 12.19 | 310 | 25.00 | 635 | 47 | 1194 | -- | -- | 19.00 | 483 |
| 12 | 300 | 27.25 | 692 | 13.13 | 334 | 16.75 | 426 | 31.00 | 787 | 67 | 1702 | -- | -- | 23.00 | 584 |

| Pipe Size | | DIMENSION | | | | | | WEIGHT | |
|-----------|-----|-----------|-----|-------------------------------------|--------------------------------------|-------------|-----------------|--------|--------|
| | | J | | Flow Coefficients (C _v) | Total Screen Area (in ²) | O-Ring Type | Number of Knobs | | |
| in | mm | in | mm | | | | | lbs | kgs |
| 1-1/2 | 40 | 2.50 | 64 | 46 | 37.78 | Buna-N | 4 | 28 | 12.47 |
| 2 | 50 | 2.50 | 64 | 73 | 60.78 | Buna-N | 4 | 39 | 17.63 |
| 2-1/2 | 65 | 2.88 | 73 | 125 | 78.53 | Buna-N | 4 | 45 | 20.30 |
| 3 | 80 | 3.13 | 80 | 180 | 115.33 | Buna-N | 4 | 73 | 33.11 |
| 4 | 100 | 3.88 | 99 | 350 | 172.18 | Buna-N | 4 | 129 | 58.48 |
| 6 | 150 | 5.10 | 127 | 900 | 352.50 | Buna-N | 6 | 237 | 107.50 |
| 8 | 200 | 8.50 | 216 | 1400 | 1091.48 | Buna-N | 8 | 488 | 221.02 |
| 10** | 250 | -- | -- | 2300 | 486.30 | Buna-N | 6 | 379 | 171.57 |
| 12** | 300 | -- | -- | 3200 | 580.27 | Buna-N | 6 | 579 | 262.30 |

**Mounting Hole Ø is 1" Nominal, 1" Thick.

DRAWING NO.
AL 91050



| BODY PRESSURE & TEMPERATURE RATINGS – NON SHOCK | | |
|---|--------|-----------------|
| NOM. RATING | MEDIA | 1-1/2" to 12" |
| 150# (STANDARD FLANGE) | STEAM | 150 PSI @ 406°F |
| | W.O.G. | 225 PSI @ 150°F |

| PARTS LIST | | |
|------------|--------------------|--|
| ITEM | DESCRIPTION | MATERIAL |
| 1 | BODY | CAST BRONZE (ASTM B 62, C83600) |
| 2 | BASKET | STAINLESS STEEL (304) |
| 3 | GASKET | SPIRAL WOUND STAINLESS STEEL (304) – GRAPHITE FILLED |
| 4 | COVER | CAST BRONZE (ASTM B 62, C83600) |
| 5 | PIPE PLUG | STAINLESS STEEL (316) |
| 6 | HEX HEAD CAP SCREW | STAINLESS STEEL (316) |


| Product Number† | SIZE | DIMENSIONS (in) | | | | COVER | | WEIGHT (lbs) |
|----------------------|-------|-----------------|----------|--------|-------|--------------|-----------------|--------------|
| | | A | B | C | E | No. of Bolts | Size of Bolts | |
| 11/22FFS-B2062P34-GB | 1-1/2 | 6-1/2 | 4-1/2 | 4 | 1/2 | 4 | 5/8-11 x 1-3/16 | 22 |
| 22FFS-B2062P34-GB | 2 | 8-1/2 | 5-7/8 | 4-3/4 | 1/2 | 4 | 5/8-11 x 1-3/16 | 30 |
| 21/22FFS-B2062P34-GB | 2-1/2 | 8 | 5-7/16 | 4-1/4 | 3/4 | 4 | 5/8-11 x 1-3/8 | 35 |
| 32FFS-B2062P34-GB | 3 | 8-3/4 | 5-11/16 | 5-5/8 | 3/4 | 6 | 1/2-13 x 1-3/8 | 39 |
| 42FFS-B2125P34-GB | 4 | 11-3/16 | 8-1/4 | 6-1/16 | 1 | 6 | 1/2-13 x 1-5/8 | 69 |
| 52FFS-B2125P34-GB | 5 | 12-1/4 | 10-1/4 | 5-5/8 | 1 | 8 | 5/8-11 x 1-5/8 | 110 |
| 62FFS-B2125P34-GB | 6 | 13-7/8 | 12-13/64 | 6-5/16 | 1-1/4 | 8 | 5/8-11 x 1-7/8 | 125 |
| 82FFS-B2125P34-GB | 8 | 17-3/8 | 15-9/16 | 8-3/16 | 1-1/2 | 8 | 5/8-11 x 2-1/8 | 270 |
| 102FFS-B2125P34-GB | 10 | 22 | 16 | 10-3/8 | 1-1/2 | 12 | 5/8-11 x 2-1/4 | 360 |
| 122FFS-B2125P34-GB | 12 | 25 | 23-3/4 | 12-3/8 | 2 | 16 | 5/8-11 x 2-9/16 | 450 |

†See "Style BGFV Product Number Configuration" for additional options.

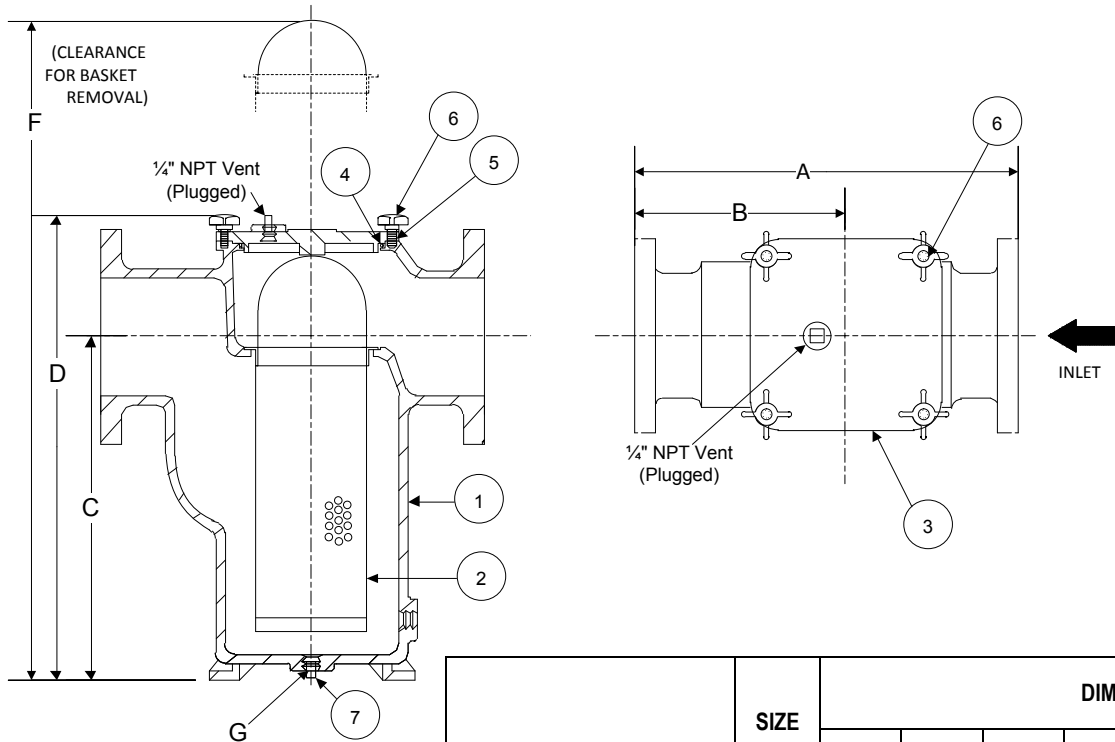
STANDARD SCREENS SUPPLIED

| SIZE in | SCREEN GAGE | SCREEN PERFORATION | | | |
|------------|----------------|--------------------|--------------|------------------|--------------|
| | | FOR STEAM in | OPEN AREA | FOR LIQUID in | OPEN AREA |
| 1-1/2 to 3 | 22 | 3/64 | 33% | 1/16 | 30% |
| 4 to 12 | 22 | 1/16 | 30% | 1/8 | 43% |

Standard screens supplied are for **liquid service**, unless otherwise specified.
Options: Other meshes, perforations, and screen materials are available.

| | |
|--|-------------------------|
|  3400 CLEVELAND SKOKIE ILLINOIS | DRAWING NO. AL 91050 |
| | PART NO. |
| DIMENSIONAL ASSEMBLY | SCALE: NTS |
| 150# Flange Style BGFV Cast Bronze | DATE: 07/01/2011 |
| Basket Strainer w/ 304 ss screen | DR. BY DSF |
| MAT'L: | REQ. --- |

DRAWING NO.
AL 91130

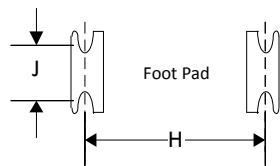


| BODY PRESSURE & TEMPERATURE RATINGS – NON SHOCK | | |
|---|--------|-----------------|
| NOM. RATING | MEDIA | 1-1/2" to 8" |
| 150# (STANDARD FLANGE) | W.O.G. | 200 PSI @ 100°F |

| PARTS LIST | | |
|------------|-------------|---|
| ITEM | DESCRIPTION | MATERIAL |
| 1 | BODY | NICKEL ALUMINUM BRONZE (ASTM B 148, C95800) |
| 2 | BASKET | STAINLESS STEEL (304) |
| 3 | COVER | NICKEL ALUMINUM BRONZE (ASTM B 148, C95800) |
| 4 | O-RING | BUNA-N (MAX TEMPERATURE 150°F) |
| 5 | STUD | CARBON STEEL (ASTM A 193, GRADE B7) |
| 6 | KNOB | STEEL |
| 7 | BODY PLUG | BRASS |

| Product Numbers† | SIZE | DIMENSIONS (in) | | | | | | | | COVER | | WEIGHT (lbs) |
|-----------------------|-------|-----------------|-------|-------|--------|----|-----|-------|------|-----------------|-----------------|--------------|
| | | A | B | C | D | F | G | H | J | Number of Knobs | Size of Stud | |
| 11/22FFS-NA125P34-BOK | 1-1/2 | 10.25 | 5.63 | 7 | 11 | 16 | 1/4 | 5.5 | 2.50 | 4 | 1/2-13 x 2-3/16 | 17 |
| 22FFS-NA125P34-BOK | 2 | 10.50 | 5.75 | 6.63 | 10.25 | 20 | 1/2 | 5.5 | 2.50 | 4 | 1/2-13 x 1-3/4 | 31 |
| 21/22FFS-NA125P34-BOK | 2-1/2 | 11.63 | 6.63 | 7.88 | 11.88 | 23 | 3/8 | 6.5 | 2.88 | 4 | 5/8-11 x 2 | 47 |
| 32FFS-NA125P34-BOK | 3 | 13.1 | 7.25 | 9.25 | 13.75 | 27 | 3/8 | 7 | 3.13 | 4 | 5/8-11 x 2 | 76 |
| 42FFS-NA125P34-BOK | 4 | 16.75 | 9.38 | 9 | 14.75 | 29 | 1/2 | 10 | 3.88 | 4 | 5/8-11 x 2-1/2 | 125 |
| 62FFS-NA125P34-BOK | 6 | 19.63 | 10.81 | 15.75 | 24 | 46 | 1/2 | 10 | 5 | 6 | 5/8-11 x 2-3/4 | 200 |
| 82FFS-NA125P34-BOK | 8 | 27 | 16 | 27 | 36.187 | 61 | 1/2 | 15.75 | 8.5 | 8 | 5/8-11 x 2-7/8 | 285 |

†See "Style BKF-7 Product Number Configuration" for additional options.



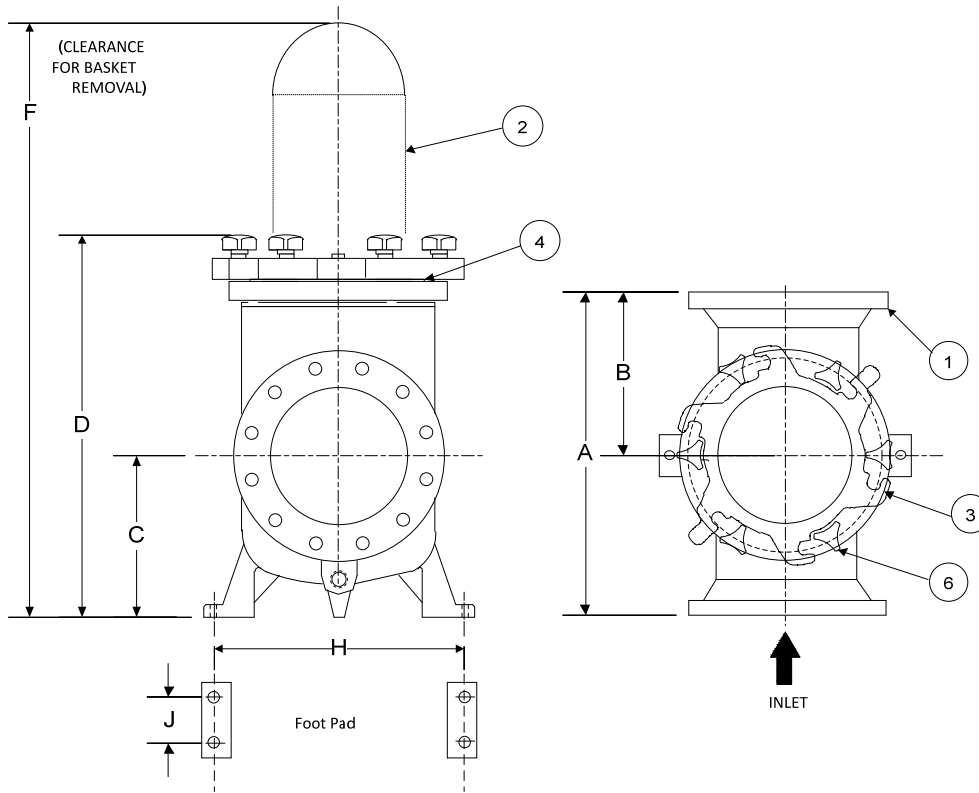
STANDARD SCREENS SUPPLIED

| SIZE in | SCREEN GAGE | SCREEN PERFORATION | |
|------------|-------------|--------------------|-----------|
| | | FOR LIQUID in | OPEN AREA |
| 1-1/2 to 4 | 28 | 1/8 | 43% |
| 6 & 8 | 24 | 1/8 | 43% |

Standard screens supplied are for liquid service, unless otherwise specified.
Options: Other meshes, perforations, and screen materials are available.

| | |
|--|-------------------------|
| 3400 CLEVELAND SKOKIE ILLINOIS | DRAWING NO. AL 91130 |
| | PART NO. |
| DIMENSIONAL ASSEMBLY | SCALE: NTS |
| 150# Flg. Style BKF-7 Nickel Aluminum Bronze Basket Strainer w/ 304 ss screen | DATE: 07/01/2011 |
| MAT'L: | DR. BY DSF |
| REQ. --- | |

DRAWING NO.
AL 91150



| BODY PRESSURE & TEMPERATURE RATINGS – NON SHOCK | | |
|---|--------|-----------------|
| NOM. RATING | MEDIA | 1-1/2" to 8" |
| 150# (STANDARD FLANGE) | W.O.G. | 200 PSI @ 100°F |

| PARTS LIST | | |
|------------|-------------|---|
| ITEM | DESCRIPTION | MATERIAL |
| 1 | BODY | NICKEL ALUMINUM BRONZE (ASTM B 148, C95800) |
| 2 | BASKET | STAINLESS STEEL (304) |
| 3 | COVER | NICKEL ALUMINUM BRONZE (ASTM B 148, C95800) |
| 4 | O-RING | BUNA-N (MAX TEMPERATURE 150°F) |
| 5 | STUD | CARBON STEEL (ASTM A 193, GRADE B7) |
| 6 | KNOB | STEEL |
| 7 | BODY PLUG | BRASS |


| Product Numbers† | SIZE | DIMENSIONS (in) | | | | | | | COVER | | WEIGHT (lbs) |
|---------------------|------|-----------------|-------|-------|----|----|----|----------------------|-----------------|---------------|--------------|
| | | A | B | C | D | F | H | J | Number of Knobs | Size of Studs | |
| 102FFS-NA125P34-BOK | 10 | 23 | 11 | 12.19 | 25 | 47 | 19 | 1" NOMINAL, 1" THICK | 6 | 1-8 x 3-3/16 | 420 |
| 122FFS-NA125P34-BOK | 12 | 27.25 | 13.13 | 16.75 | 31 | 67 | 23 | 1" NOMINAL, 1" THICK | 6 | 1-8 x 3-1/2 | 550 |

†See "Style BKF-7 Product Number Configuration" for additional options.

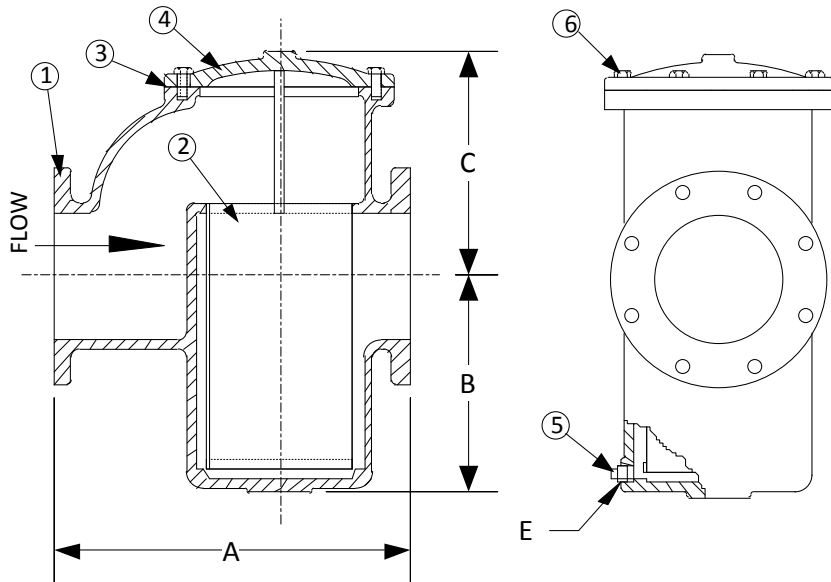
STANDARD SCREENS SUPPLIED

| SIZE | SCREEN GAGE | SCREEN PERFORATION | |
|---------|-------------|--------------------|-----------|
| | | FOR LIQUID | OPEN AREA |
| in | | in | |
| 10 & 12 | 24 | 1/8 | 43% |

Standard screens supplied are for **liquid service**, unless otherwise specified.
Options: Other meshes, perforations, and screen materials are available.

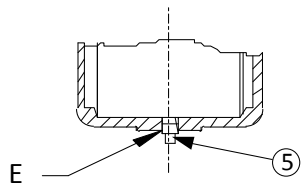
| | | |
|---|----------|-------------------------|
|  | | DRAWING NO. AL 91150 |
| 3400 CLEVELAND SKOKIE ILLINOIS | | PART NO. |
| DIMENSIONAL ASSEMBLY | | SCALE: NTS |
| 150# Flg. Style BKF-7 Nickel Aluminum Bronze | | DATE: 07/01/2011 |
| Basket Strainer w/ 304 ss screen | | DR. BY DSF |
| MAT'L: | REQ. --- | |

DRAWING NO.
25068 A



| BODY PRESSURE & TEMPERATURE RATINGS – NON SHOCK | | |
|---|--------|-----------------|
| NOM. RATING | MEDIA | 2" to 12" |
| 150# (STANDARD FLANGE) | STEAM | 150 PSI @ 406°F |
| | W.O.G. | 225 PSI @ 150°F |

| PARTS LIST | | |
|------------|--------------------|---------------------------------|
| ITEM | DESCRIPTION | MATERIAL |
| 1 | BODY | CAST BRONZE (ASTM B 62, C83600) |
| 2 | BASKET | STAINLESS STEEL (304) |
| 3 | GASKET | COMPOSITION |
| 4 | COVER | CAST BRONZE (ASTM B 62, C83600) |
| 5 | PIPE PLUG | BRASS |
| 6 | HEX HEAD CAP SCREW | STEEL |



Style BDV has a bottom blow off with an open bottom basket.

| Product Number† | SIZE | DIMENSIONS (in) | | | | COVER | | WEIGHT (lbs) |
|----------------------|-------|-----------------|---------|-------|-----|--------------|----------------|--------------|
| | | A | B | C | E | No. of Bolts | Size of Bolts | |
| 22FFY-B2125P34-FB | 2 | 7-3/4 | 3-15/16 | 5-1/4 | 1/2 | 4 | 1/2-13 x 1 | 27 |
| 21/22FFY-B2125P34-FB | 2-1/2 | 8-3/4 | 4 | 6 | 1/2 | 4 | 1/2-13 x 1 | 38 |
| 32FFY-B2125P34-FB | 3 | 9-3/4 | 5 | 7 | 1/2 | 4 | 1/2-13 x 1 | 52 |
| 42FFY-B2125P34-FB | 4 | 12-3/4 | 6-3/4 | 9-1/2 | 1/2 | 4 | 3/4-10 x 2 | 135 |
| 52FFY-B2125P34-FB | 5 | 16-1/2 | 9-7/8 | 12 | 3/4 | 8 | 5/8-11 x 1-1/2 | 193 |
| 62FFY-B2125P34-FB | 6 | 16-5/8 | 9-7/8 | 12 | 3/4 | 8 | 5/8-11 x 1-1/2 | 201 |
| 82FFY-B2125P34-FB | 8 | 21-5/8 | 13-3/4 | 14 | 3/4 | 8 | 5/8-11 x 1-1/4 | 397 |
| 102FFY-B2125P34-FB | 10 | 25-5/8 | 17 | 18 | 3/4 | 8 | 1-8 x 3 | 791 |
| 122FFY-B2125P34-FB | 12 | 29-5/8 | 2-5/8 | 21 | 2 | 12 | 1-8 x 3-1/2 | 1305 |

†See "Style BD - Flg Product Number Configuration" for additional options.

STANDARD SCREENS SUPPLIED

| SIZE in | SCREEN GAGE | SCREEN PERFORATION | | | |
|------------|----------------|--------------------|--------------|------------------|--------------|
| | | FOR STEAM in | OPEN AREA | FOR LIQUID in | OPEN AREA |
| 2 to 5 | 28 | 1/16 | 30% | 1/8 | 43% |
| 6 to 8 | 24 | 1/8 | 43% | 1/8 | 43% |
| 10 to 12 | 20 | 1/8 | 43% | 1/8 | 43% |

Standard screens supplied are for liquid service, unless otherwise specified.
Options: Other meshes, perforations, and screen materials are available.

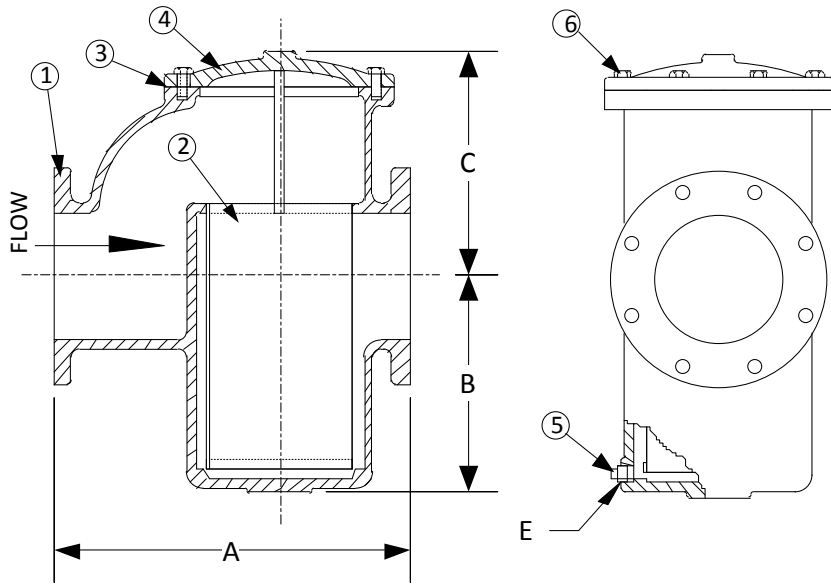
KECKLEY

3400 CLEVELAND SKOKIE ILLINOIS

DRAWING NO.
25068 A

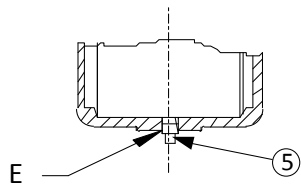
| | | |
|----------------------------------|----------|------------------|
| DIMENSIONAL ASSEMBLY | | PART NO. |
| 150# Flange Style BD Cast Bronze | | SCALE: NTS |
| Basket Strainer w/ 304 ss screen | | DATE: 07/01/2011 |
| MAT'L: | REQ. --- | DR. BY DSF |

DRAWING NO.
25068 A



| BODY PRESSURE & TEMPERATURE RATINGS – NON SHOCK | | |
|---|--------|-----------------|
| NOM. RATING | MEDIA | 2" to 12" |
| 300# (EX. HEAVY FLANGE) | STEAM | 300 PSI @ 406°F |
| | W.O.G. | 500 PSI @ 150°F |

| PARTS LIST | | |
|------------|--------------------|---------------------------------|
| ITEM | DESCRIPTION | MATERIAL |
| 1 | BODY | CAST BRONZE (ASTM B 62, C83600) |
| 2 | BASKET | STAINLESS STEEL (304) |
| 3 | GASKET | COMPOSITION |
| 4 | COVER | CAST BRONZE (ASTM B 62, C83600) |
| 5 | PIPE PLUG | BRASS |
| 6 | HEX HEAD CAP SCREW | STEEL |



Style BDV has a bottom blow off with an open bottom basket.

| Product Number† | SIZE | DIMENSIONS (in) | | | | COVER | | WEIGHT (lbs) |
|----------------------|-------|-----------------|---------|-------|-----|--------------|----------------|--------------|
| | | A | B | C | E | No. of Bolts | Size of Bolts | |
| 24FFY-B2125P34-FB | 2 | 8-1/4 | 3-15/16 | 5-1/4 | 1/2 | 4 | 1/2-13 x 1 | 33 |
| 21/24FFY-B2125P34-FB | 2-1/2 | 9-1/4 | 4 | 6 | 1/2 | 4 | 1/2-13 x 1 | 47 |
| 34FFY-B2125P34-FB | 3 | 10-5/16 | 5 | 7 | 1/2 | 4 | 1/2-13 x 1 | 63 |
| 44FFY-B2125P34-FB | 4 | 13-1/2 | 6-3/4 | 9-1/2 | 1/2 | 4 | 3/4-10 x 2 | 142 |
| 54FFY-B2125P34-FB | 5 | 17-1/4 | 9-7/8 | 12 | 3/4 | 8 | 5/8-11 x 1-1/2 | 228 |
| 64FFY-B2125P34-FB | 6 | 17-3/8 | 9-7/8 | 12 | 3/4 | 8 | 5/8-11 x 1-1/2 | 243 |
| 84FFY-B2125P34-FB | 8 | 22-1/2 | 13-3/4 | 14 | 3/4 | 8 | 5/8-11 x 1-1/4 | 472 |
| 104FFY-B2125P34-FB | 10 | 29-3/4 | 17 | 18 | 3/4 | 8 | 1-8 x 3 | 860 |
| 124FFY-B2125P34-FB | 12 | 31-5/8 | 2-5/8 | 21 | 2 | 12 | 1-8 x 3-1/2 | 1478 |

†See "Style BD - Flg Product Number Configuration" for additional options.

STANDARD SCREENS SUPPLIED

| SIZE in | SCREEN GAGE | SCREEN PERFORATION | | | |
|------------|----------------|--------------------|--------------|------------------|--------------|
| | | FOR STEAM in | OPEN AREA | FOR LIQUID in | OPEN AREA |
| 2 to 5 | 28 | 1/16 | 30% | 1/8 | 43% |
| 6 to 8 | 24 | 1/8 | 43% | 1/8 | 43% |
| 10 to 12 | 20 | 1/8 | 43% | 1/8 | 43% |

Standard screens supplied are for liquid service, unless otherwise specified.
Options: Other meshes, perforations, and screen materials are available.

KECKLEY

3400 CLEVELAND SKOKIE ILLINOIS

DRAWING NO.
25068 A

| | | |
|----------------------------------|----------|------------------|
| DIMENSIONAL ASSEMBLY | | PART NO. |
| 300# Flange Style BD Cast Bronze | | SCALE: NTS |
| Basket Strainer w/ 304 ss screen | | DATE: 07/01/2011 |
| MAT'L: | REQ. --- | DR. BY DSF |