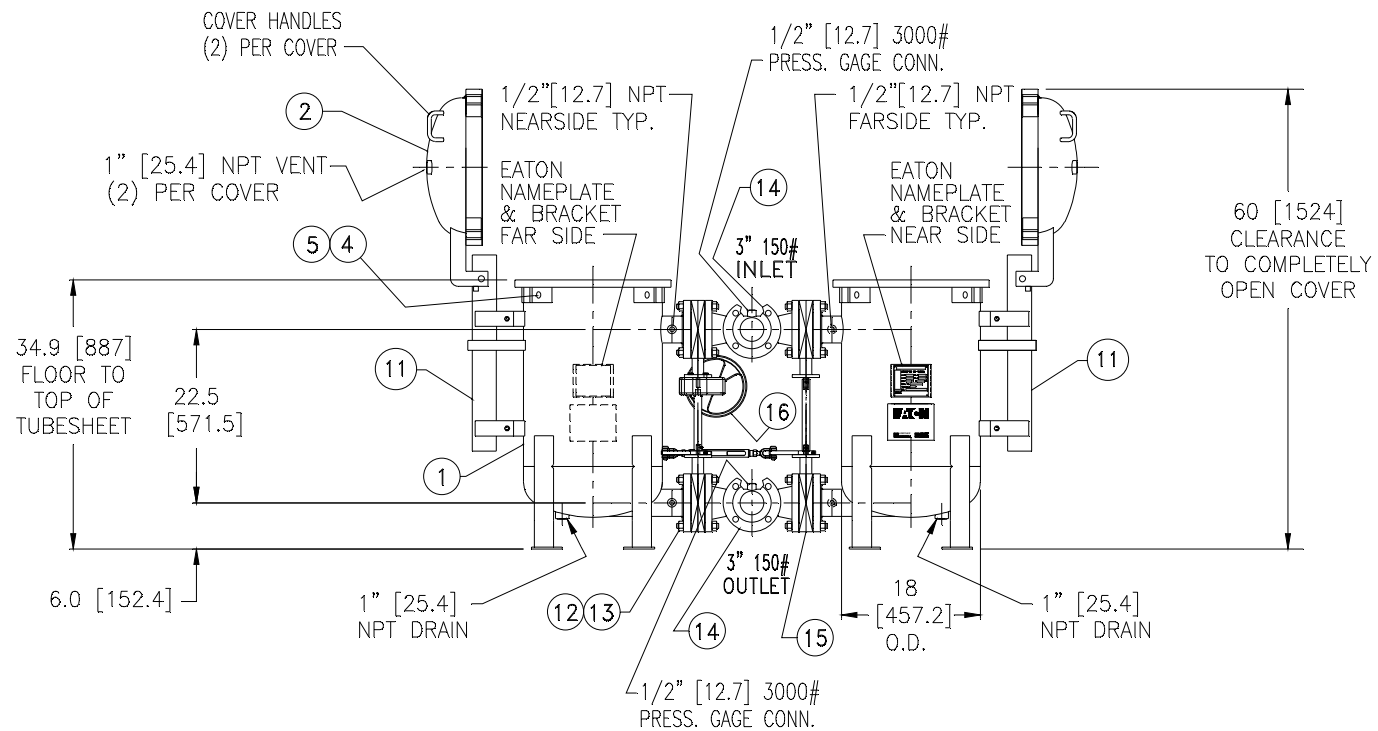
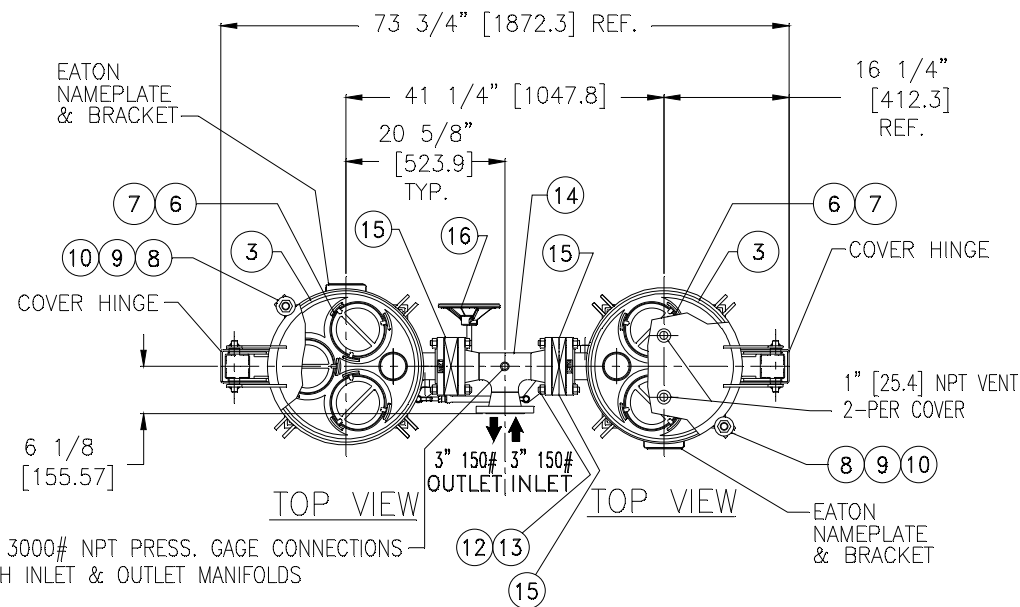


ITEM	PART NAME	MATERIAL
1	BODY	SA516 GR. 70
2	COVER	SA516 GR. 70
3	O-RING	BUNA-N
4	PIN	SA193 B7 ZINC PL
5	SNAP RING	STEEL ZINC PL
6	BASKET RESTRAINER	316 SS
7	FILTER BAG RETAINER	316 SS
8	EYE BOLT	SA193 B7 ZINC PL
9	HEX NUT	SA194 2H ZINC PL
10	WASHER	STEEL ZINC PL
11	SPRING ASSISTED MECHANISM	STAINLESS STEEL
12	MANIFOLD STUDS	SA193 B7 ZINC PL
13	MANIFOLD HEX NUTS	SA194 2H ZINC PL
14	MANIFOLDS (INLET & OUTLET)	CARBON STEEL
15	3" BUTTERFLY VALVES (SEE NOTE 7)	
16	GEAR OPERATOR & LINKAGE (SINGLE ACTING)	CARBON STEEL



**NOTES:**

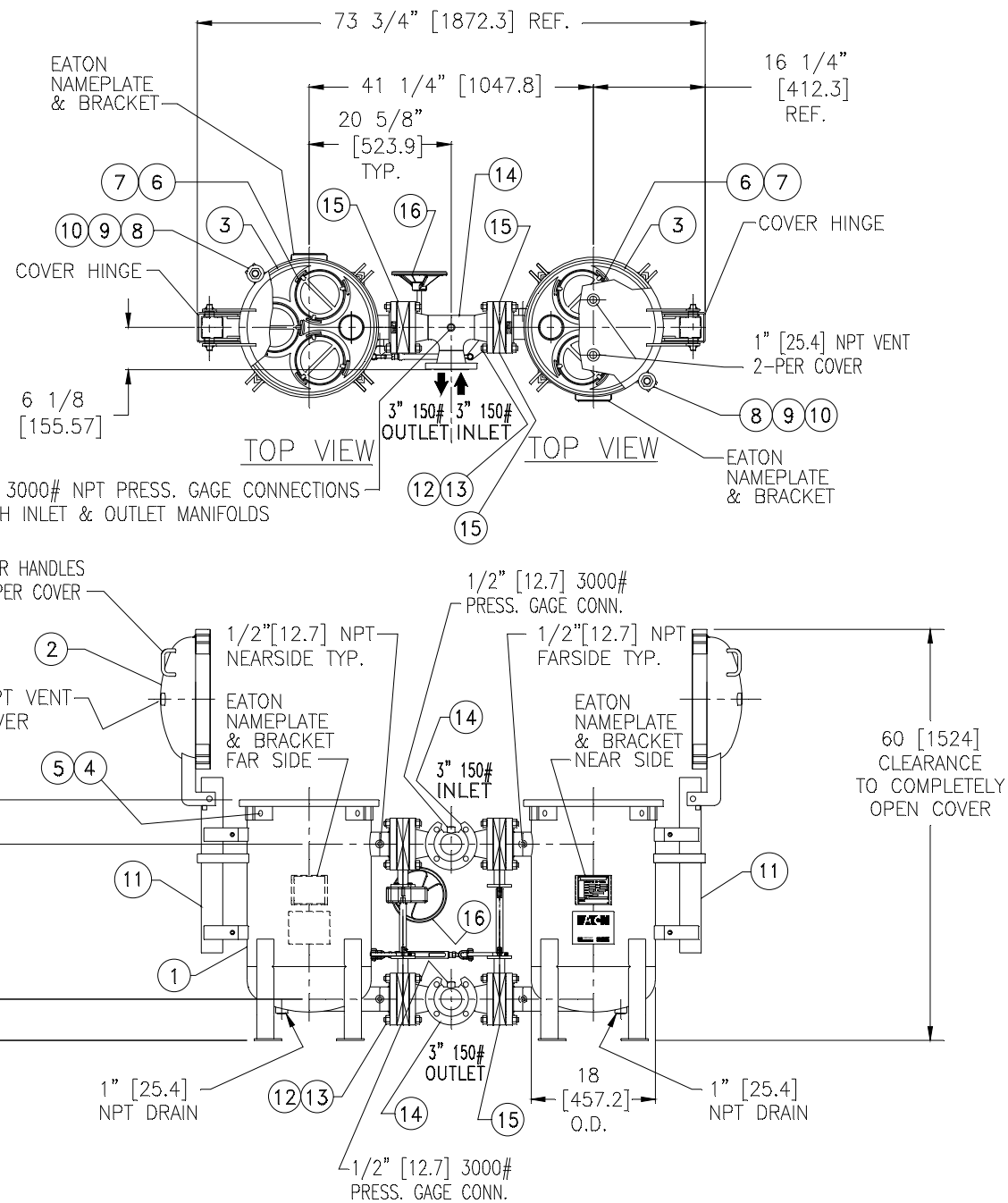
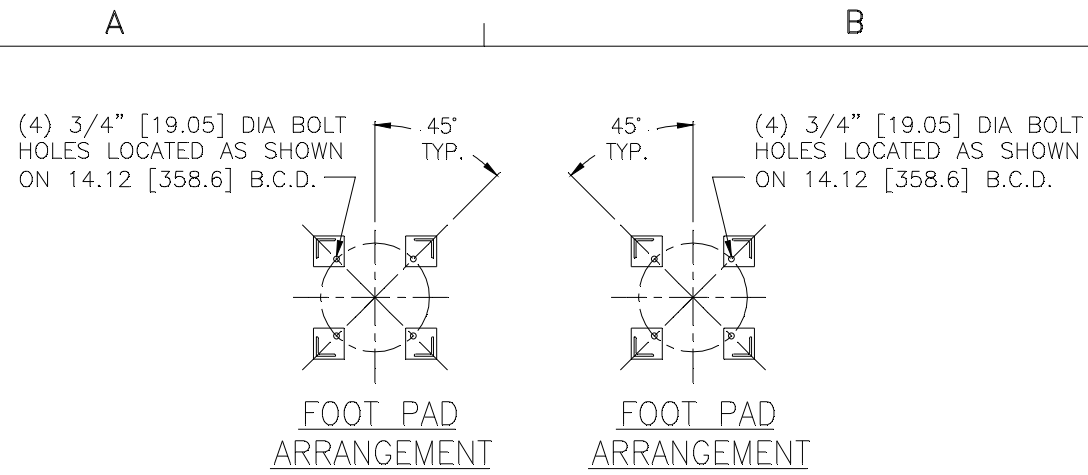
1. UNITS ARE TO BE DESIGNED, FABRICATED & "U" STAMPED IN ACCORDANCE WITH ASME SECT. VIII, DIV. 1 BOILER & PRESSURE VESSEL CODE, IN COMPLIANCE TO LATEST ADDENDA.
2. INLET / OUTLET FLANGE CONNECTIONS PER ANSI B 16.5.
3. DESIGN PRESSURE: 150 PSI (MAWP) [10.34 BAR]  
DESIGN TEMPERATURE 250° F. [121° C]  
MDMT - -20° F @ 150 PSI [-28.9° C @ 10.34 BAR]
4. ALL DIMENSIONS ARE IN INCHES & [MILLIMETERS]
5. ALL BOLT HOLES ARE TO STRADDLE NATURAL CENTERLINES.
6. APPROX. WEIGHT (DRY) 710 LB. (322.1 KG.)
7. 3" BUTTERFLY VALVES WAFER STYLE:  
BRAY SERIES 30  
BODY-CAST IRON  
DISC-DUCTILE IRON  
STEM-SSTL  
SEATS-EPDM
8. PAINT CARBON STEEL PER EATON STANDARD ES-301.

CERTIFIED FOR:  
P.O. NO.:  
SALES ORDER NO.:  
VESSEL CODE: DMBF-0302-CS10-030A-UT-13HE-VAL-LINK  
PART NUMBER: F3AV0300301-B

		<b>EATON FILTRATION, LLC</b> 900 FAIRMOUNT AVENUE, ELIZABETH, NEW JERSEY 07207	
		NAME DMBF-0302 DUPLEX FILTER VESSEL 3" 150# INLET/ TANG. OUTLET TYPE HE CARBON STEEL	
DRAWN FJM SIZE B	DATE 07/24/03 DWG NO	CERT. LH DATE 07/24/03	REV C

ELECTRONIC FILE NAME: DHE0303TC-B  
REF. ECR E860 DATE 10/09/07

UNAUTHORIZED USE, MANUFACTURE OR REPRODUCTION IN WHOLE OR IN PART IS PROHIBITED. DRAWING, DESIGN AND OTHER DISCLOSURES PROPERTY OF EATON FILTRATION, LLC



ITEM	PART NAME	MATERIAL
1	BODY	SA240-304/304L
2	COVER	SA240-304/304L
3	O-RING	BUNA-N
4	PIN	SA193 B7 ZINC PL
5	SNAP RING	STEEL ZINC PL
6	BASKET RESTRAINER	304 SS
7	FILTER BAG RETAINER	304 SS
8	EYE BOLT	SA193 B7 ZINC PL
9	HEX NUT	SA194 2H ZINC PL
10	WASHER	STEEL ZINC PL
11	SPRING ASSISTED MECHANISM	STAINLESS STEEL
12	MANIFOLD STUDS	SA193 B7 ZINC PL
13	MANIFOLD HEX NUTS	SA194 2H ZINC PL
14	MANIFOLDS (INLET & OUTLET)	304 SS
15	3" BUTTERFLY VALVES (SEE NOTE 7)	
16	GEAR OPERATOR & LINKAGE (SINGLE ACTING)	CARBON STEEL

**NOTES:**

- UNITS ARE TO BE DESIGNED, FABRICATED & "U" STAMPED IN ACCORDANCE WITH ASME SECT. VIII, DIV. 1 BOILER & PRESSURE VESSEL CODE, IN COMPLIANCE TO LATEST ADDENDA.
- INLET / OUTLET FLANGE CONNECTIONS PER ANSI B 16.5.
- DESIGN PRESSURE: 150 PSI (MAWP) [10.34 BAR]  
DESIGN TEMPERATURE 250° F. [121° C]  
MDMT - -20° F @ 150 PSI [-28.9° C @ 10.34 BAR]
- ALL DIMENSIONS ARE IN INCHES & [MILLIMETERS]
- ALL BOLT HOLES ARE TO STRADDLE NATURAL CENTERLINES.
- APPROX. WEIGHT (DRY) 710 LB. (322.1 KG.)
- 3" BUTTERFLY VALVES WAFER STYLE:  
BRAY SERIES 30  
BODY-DUCTILE IRON  
DISC & STEM-SSTL  
SEATS-EPDM
- PAINT CARBON STEEL PER EATON STANDARD ES-301.

CERTIFIED FOR:  
P.O. NO.:  
SALES ORDER NO.:  
VESSEL CODE: DMBF-0302-BB10-030A-UT-11HE-VAL-LINK  
PART NUMBER: F3AV0300300-B304

**EATON FILTRATION, LLC**  
900 FAIRMOUNT AVENUE, ELIZABETH, NEW JERSEY 07207

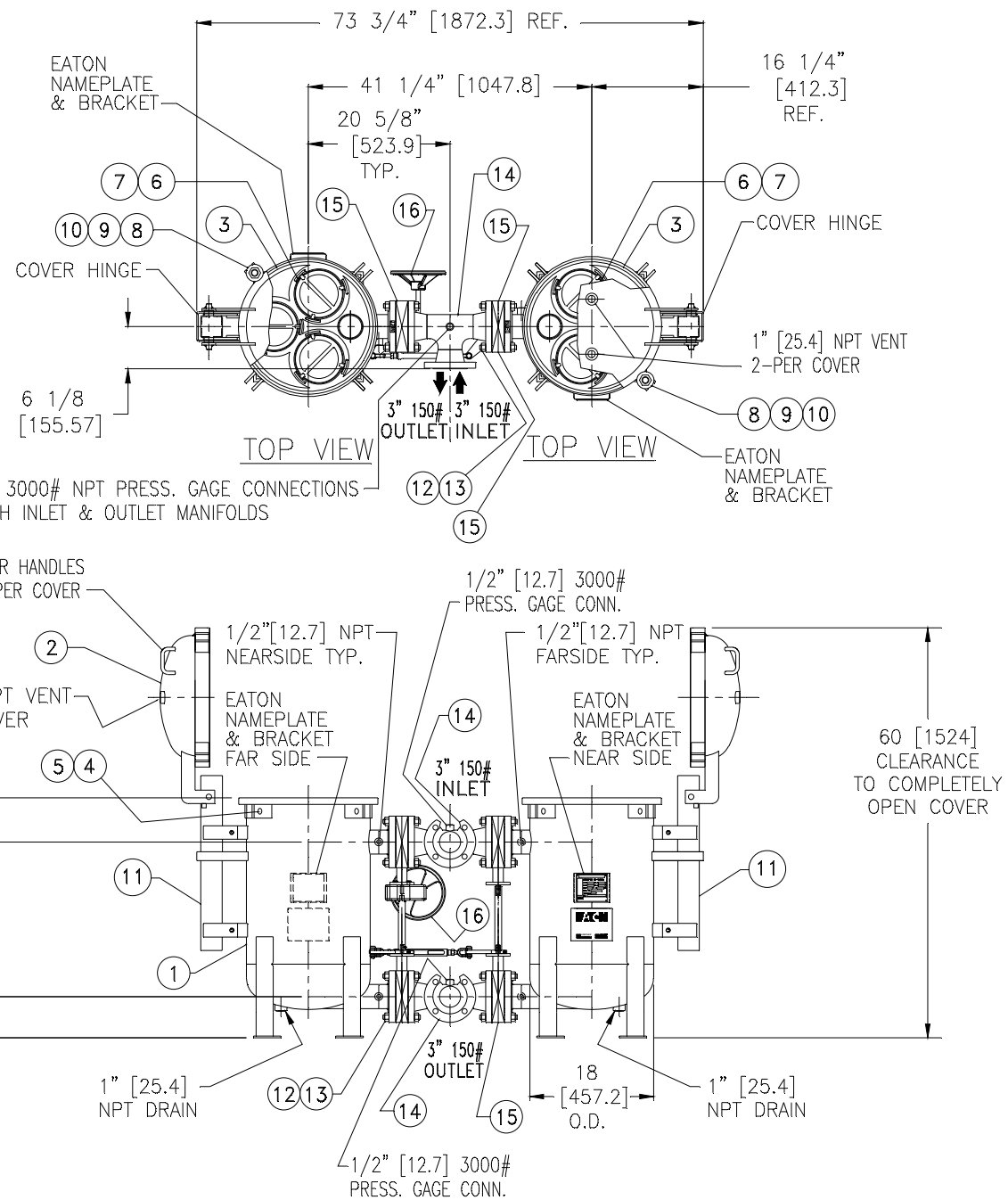
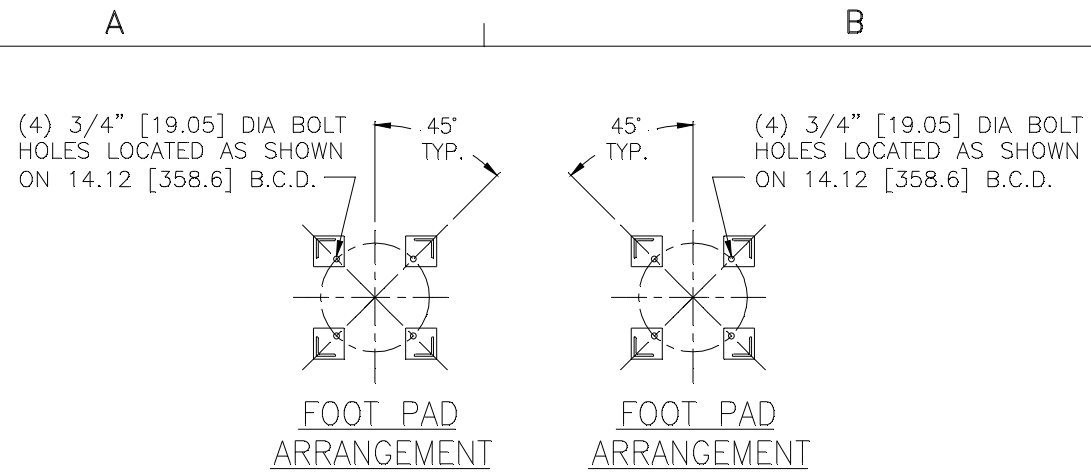
NAME: DMBF-0302 DUPLEX FILTER VESSEL  
3" 150# INLET/ TANG. OUTLET  
TYPE HE STAINLESS STEEL-304

DRAWN FJM DATE 06/21/06 CERT. LH DATE 06/21/06

SIZE B DWG NO DHE0303TS-B304 REV B

ELECTRONIC FILE NAME: DHE0303TS-B304.DWG  
REF. ECR E860 DATE 10/10/07

UNAUTHORIZED USE, MANUFACTURE OR REPRODUCTION IN WHOLE OR IN PART IS PROHIBITED. DRAWING, DESIGN AND OTHER DISCLOSURES PROPERTY OF EATON FILTRATION, LLC



ITEM	PART NAME	MATERIAL
1	BODY	SA240-316/316L
2	COVER	SA240-316/316L
3	O-RING	BUNA-N
4	PIN	SA193 B7 ZINC PL
5	SNAP RING	STEEL ZINC PL
6	BASKET RESTRAINER	316 SS
7	FILTER BAG RETAINER	316 SS
8	EYE BOLT	SA193 B7 ZINC PL
9	HEX NUT	SA194 2H ZINC PL
10	WASHER	STEEL ZINC PL
11	SPRING ASSISTED MECHANISM	STAINLESS STEEL
12	MANIFOLD STUDS	SA193 B7 ZINC PL
13	MANIFOLD HEX NUTS	SA194 2H ZINC PL
14	MANIFOLDS (INLET & OUTLET)	316 SS
15	3\" BUTTERFLY VALVES (SEE NOTE 7)	
16	GEAR OPERATOR & LINKAGE (SINGLE ACTING)	CARBON STEEL

**NOTES:**

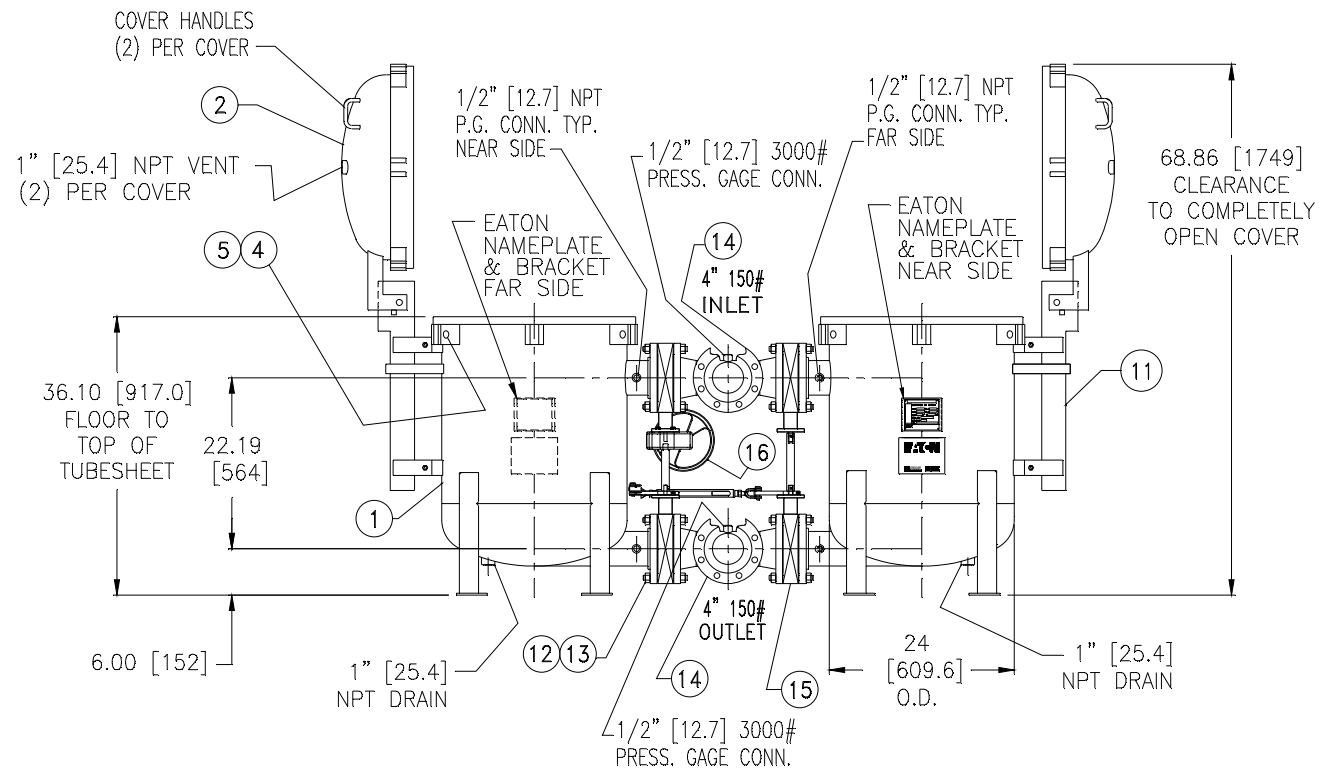
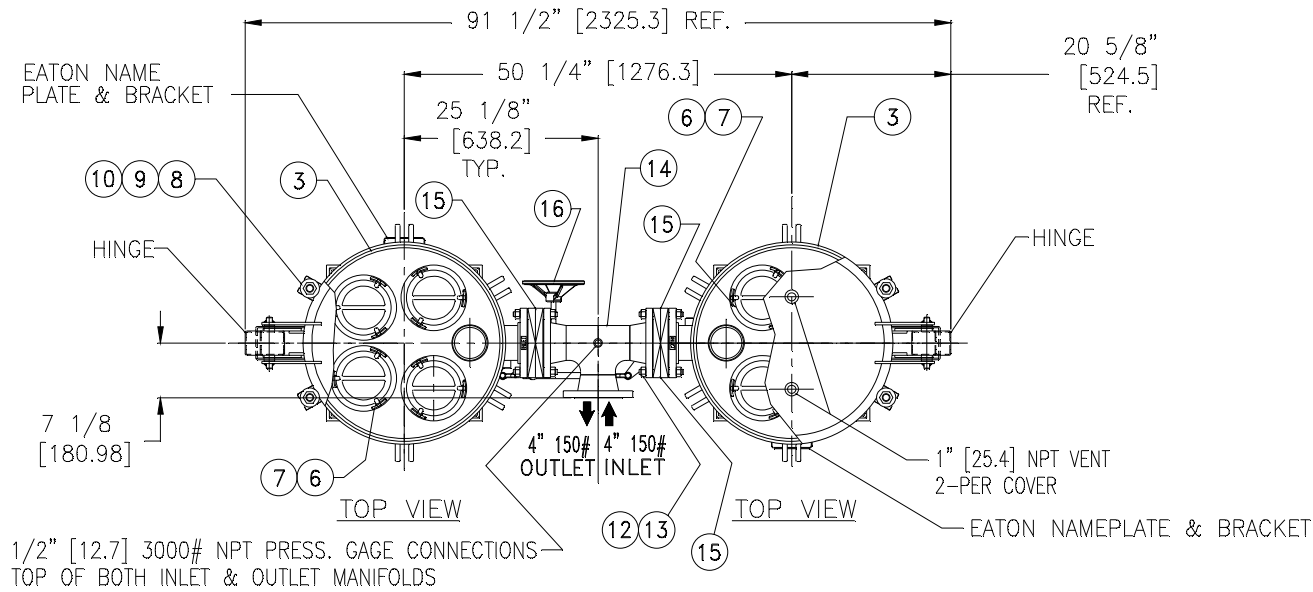
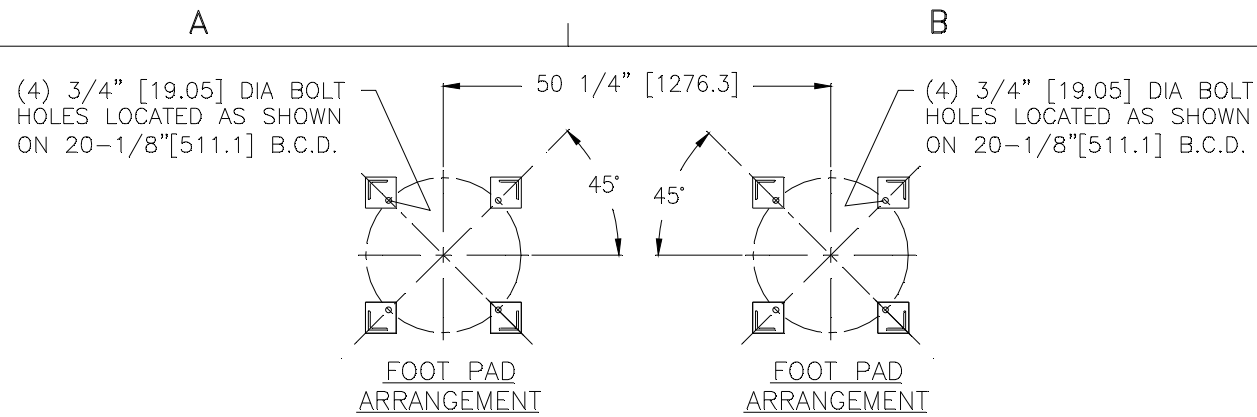
- UNITS ARE TO BE DESIGNED, FABRICATED & "U" STAMPED IN ACCORDANCE WITH ASME SECT. VIII, DIV. 1 BOILER & PRESSURE VESSEL CODE, IN COMPLIANCE TO LATEST ADDENDA.
- INLET / OUTLET FLANGE CONNECTIONS PER ANSI B 16.5.
- DESIGN PRESSURE: 150 PSI (MAWP) [10.34 BAR]  
DESIGN TEMPERATURE 250° F. [121° C]  
MDMT - -20° F @ 150 PSI [-28.9° C @ 10.34 BAR]
- ALL DIMENSIONS ARE IN INCHES & [MILLIMETERS]
- ALL BOLT HOLES ARE TO STRADDLE NATURAL CENTERLINES.
- APPROX. WEIGHT (DRY) 710 LB. (322.1 KG.)
- 3\" BUTTERFLY VALVES WAFER STYLE:  
BRAY SERIES 30  
BODY-DUCTILE IRON  
DISC & STEM-SSTL  
SEATS-EPDM
- PAINT CARBON STEEL PER EATON STANDARD ES-301.

CERTIFIED FOR:  
P.O. NO.:  
SALES ORDER NO.:  
VESSEL CODE: DMBF-0302-AB10-030A-UT-11HE-VAL-LINK  
PART NUMBER: F3AV0300300-B

<b>EATON</b>		<b>EATON FILTRATION, LLC</b>	
		900 FAIRMOUNT AVENUE, ELIZABETH, NEW JERSEY 07207	
NAME		DMBF-0302 DUPLEX FILTER VESSEL 3\" 150# INLET/ TANG. OUTLET TYPE HE STAINLESS STEEL-316	
DRAWN	FJM	DATE	07/24/03
CERT.	LH	DATE	07/24/03
SIZE	DWG NO	DHE0303TS-B	
B		REV	C

ELECTRONIC FILE NAME: DHE0303TS-B  
REF. ECR E860 DATE 10/10/07

UNAUTHORIZED USE, MANUFACTURE OR REPRODUCTION IN WHOLE OR IN PART IS PROHIBITED. DRAWING, DESIGN AND OTHER DISCLOSURES PROPERTY OF EATON FILTRATION, LLC



ITEM	PART NAME	MATERIAL
1	BODY	SA516 GR. 70
2	COVER	SA516 GR. 70
3	O-RING	BUNA-N
4	PIN	SA193 B7 ZINC PL
5	SNAP RING	STEEL ZINC PL
6	BASKET RESTRAINER	316 SS
7	FILTER BAG RETAINER	316 SS
8	EYE BOLT	SA193 B7 ZINC PL
9	HEX NUT	SA194 2H ZINC PL
10	WASHER	STEEL ZINC PL
11	SPRING ASSISTED MECHANISM	STAINLESS STEEL
12	MANIFOLD STUDS	SA193 B7 ZINC PL
13	MANIFOLD HEX NUTS	SA194 2H ZINC PL
14	MANIFOLDS (INLET & OUTLET)	CARBON STEEL
15	4" BUTTERFLY VALVES (SEE NOTE 7)	CARBON STEEL
16	GEAR OPERATOR & LINKAGE (SINGLE ACTING)	CARBON STEEL

**NOTES:**

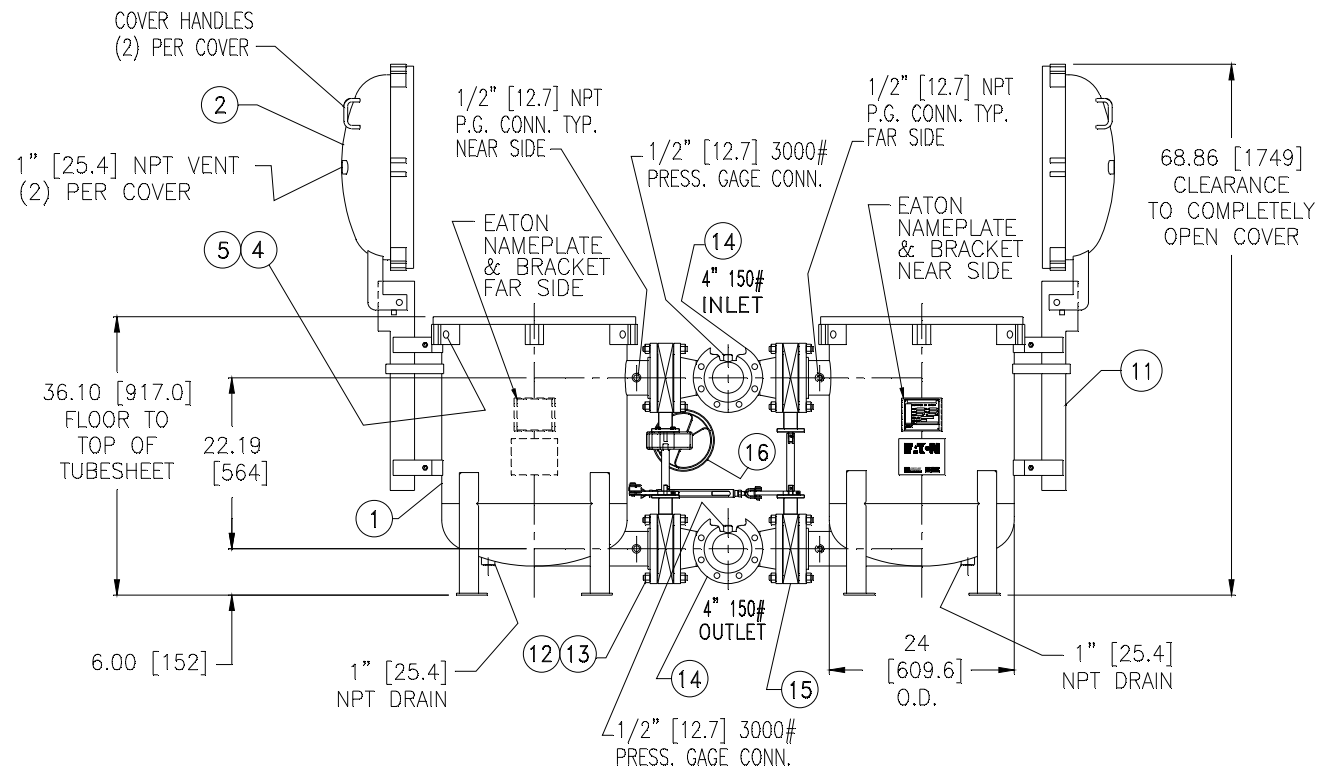
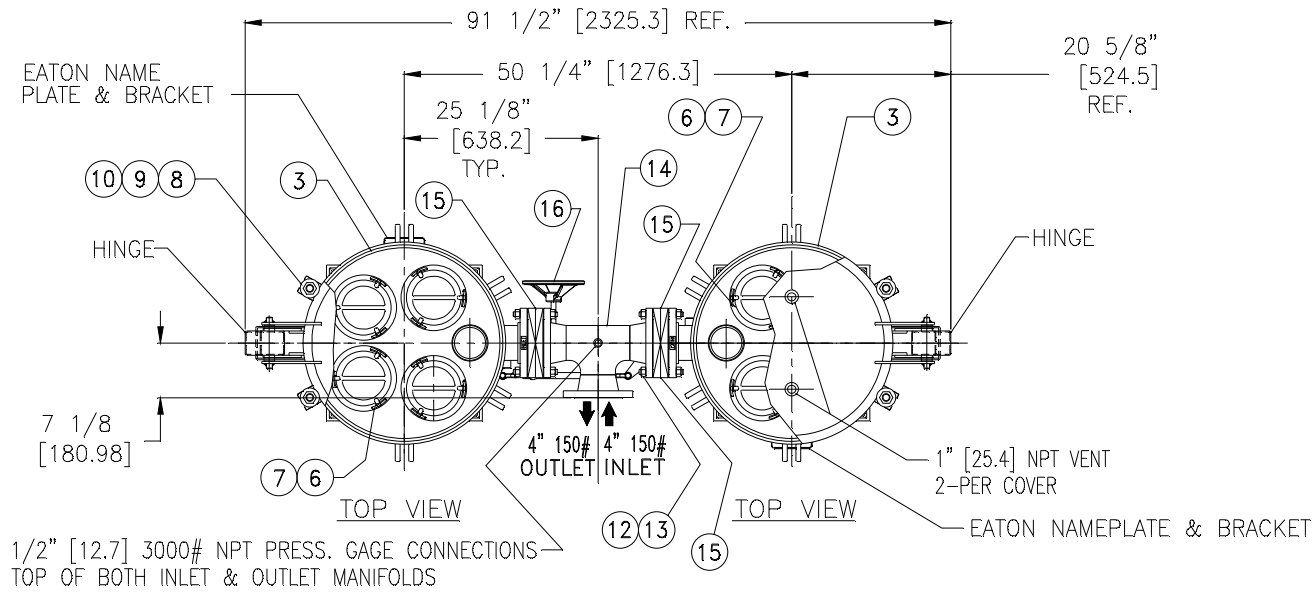
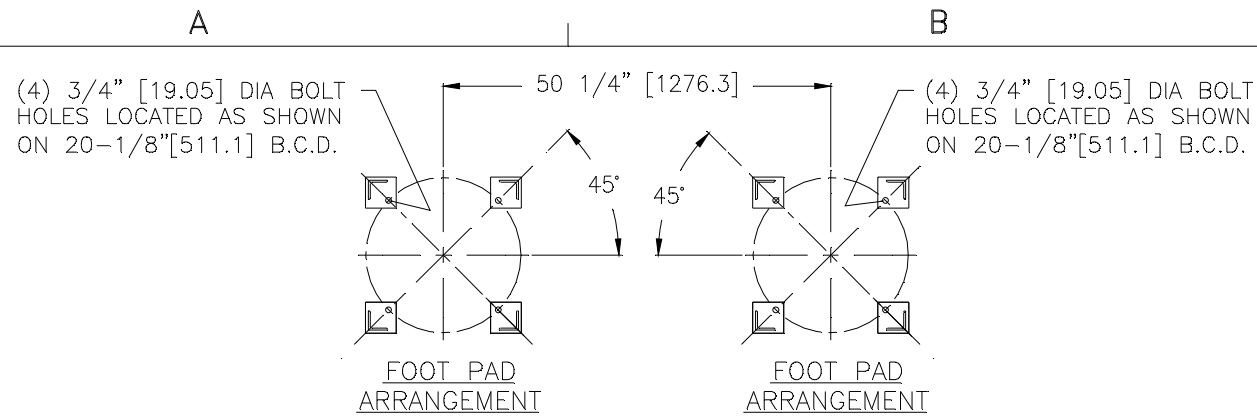
1. UNITS ARE TO BE DESIGNED, FABRICATED & "U" STAMPED IN ACCORDANCE WITH ASME SECT. VIII, DIV. 1 BOILER & PRESSURE VESSEL CODE, IN COMPLIANCE TO LATEST ADDENDA.
2. INLET / OUTLET FLANGE CONNECTIONS PER ANSI B 16.5.
3. DESIGN PRESSURE: 150 PSI (MAWP) [10.34 BAR]  
DESIGN TEMPERATURE 250° F. [121° C]  
MDMT - -20° F @ 150 PSI [-28.9° C @ 10.34 BAR]
4. ALL DIMENSIONS ARE IN INCHES & [MILLIMETERS]
5. ALL BOLT HOLES ARE TO STRADDLE NATURAL CENTERLINES.
6. APPROX. WEIGHT (DRY) 938 LB. (425.4 KG.)
7. 4" BUTTERFLY VALVES WAFER STYLE:  
BRAY SERIES 30  
BODY-CAST IRON  
DISC-DUCTILE IRON  
STEM-SSTL  
SEATS-EPDM
8. PAINT CARBON STEEL PER EATON STANDARD ES-301.

CERTIFIED FOR:  
P.O. NO.:  
SALES ORDER NO.:  
VESSEL CODE: DMBF-0402-CS10-040A-UT-13HE-VAL-LINK  
PART NUMBER: F3AV0400301-B

		<b>EATON FILTRATION, LLC</b> 900 FAIRMOUNT AVENUE, ELIZABETH, NEW JERSEY 07207	
		NAME DMBF-0402 DUPLEX FILTER VESSEL 4" 150# INLET/ TANG. OUTLET TYPE HE CARBON STEEL	
DRAWN FJM SIZE B	DATE 07/24/03 DWG NO	CERT. LH DATE 07/24/03	REV C

ELECTRONIC FILE NAME: DHE0404TC-B  
REF. ECR E860 DATE 10/10/07

UNAUTHORIZED USE, MANUFACTURE OR REPRODUCTION IN WHOLE OR IN PART IS PROHIBITED. DRAWING, DESIGN AND OTHER DISCLOSURES PROPERTY OF EATON FILTRATION, LLC



ITEM	PART NAME	MATERIAL
1	BODY	SA240-304/304L
2	COVER	SA240-304/304L
3	O-RING	BUNA-N
4	PIN	SA193 B7 ZINC PL
5	SNAP RING	STEEL ZINC PL
6	BASKET RESTRAINER	304 SS
7	FILTER BAG RETAINER	304 SS
8	EYE BOLT	SA193 B7 ZINC PL
9	HEX NUT	SA194 2H ZINC PL
10	WASHER	STEEL ZINC PL
11	SPRING ASSISTED MECHANISM	STAINLESS STEEL
12	MANIFOLD STUDS	SA193 B7 ZINC PL
13	MANIFOLD HEX NUTS	SA194 2H ZINC PL
14	MANIFOLDS (INLET & OUTLET)	304 SS
15	4" BUTTERFLY VALVES (SEE NOTE 7)	
16	GEAR OPERATOR & LINKAGE (SINGLE ACTING)	CARBON STEEL

**NOTES:**

- UNITS ARE TO BE DESIGNED, FABRICATED & "U" STAMPED IN ACCORDANCE WITH ASME SECT. VIII, DIV. 1 BOILER & PRESSURE VESSEL CODE, IN COMPLIANCE TO LATEST ADDENDA.
- INLET / OUTLET FLANGE CONNECTIONS PER ANSI B 16.5.
- DESIGN PRESSURE: 150 PSI (MAWP) [10.34 BAR]  
DESIGN TEMPERATURE 250° F. [121° C]  
MDMT - -20° F @ 150 PSI [-28.9° C @ 10.34 BAR]
- ALL DIMENSIONS ARE IN INCHES & [MILLIMETERS]
- ALL BOLT HOLES ARE TO STRADDLE NATURAL CENTERLINES.
- APPROX. WEIGHT (DRY) 938 LB. (425.4 KG.)
- 4" BUTTERFLY VALVES WAFER STYLE:  
BRAY SERIES 30  
BODY-DUCTILE IRON  
DISC & STEM-SSTL  
SEATS-EPDM
- PAINT CARBON STEEL PER EATON STANDARD ES-301.

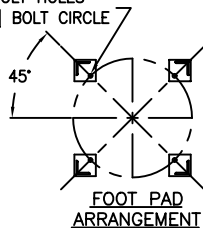
CERTIFIED FOR:  
P.O. NO.:  
SALES ORDER NO.:  
VESSEL CODE: DMBF-0402-BB10-040A-UT-11HE-VAL-LINK  
PART NUMBER: F3AV0400300-B304

		<b>EATON FILTRATION, LLC</b> 900 FAIRMOUNT AVENUE, ELIZABETH, NEW JERSEY 07207	
		NAME DMBF-0402 DUPLEX FILTER VESSEL 4" 150# INLET/ TANG. OUTLET TYPE HE STAINLESS STEEL-304	
DRAWN FJM SIZE B	DATE 06/21/06 DWG NO DHE0404TS-B304	CERT. LH DATE 06/21/06	REV B

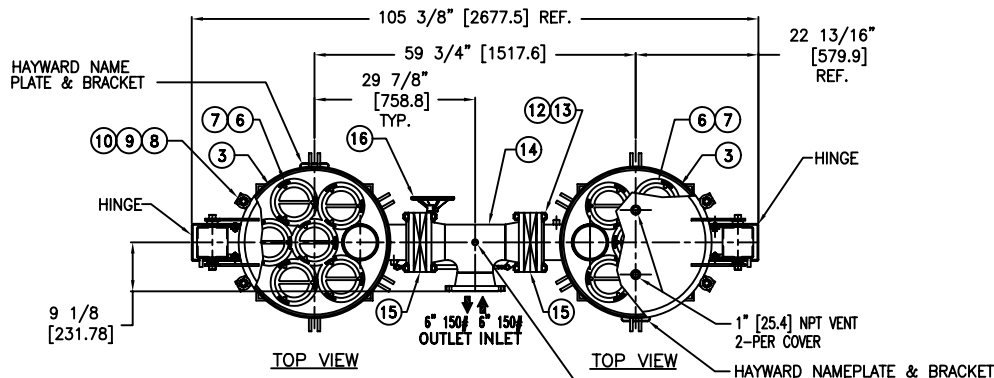
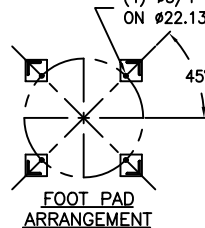
ELECTRONIC FILE NAME: DHE0404TS-B304.DWG  
REF. ECR E860 DATE 10/10/07

UNAUTHORIZED USE, MANUFACTURE OR REPRODUCTION IN WHOLE OR IN PART IS PROHIBITED. DRAWING, DESIGN AND OTHER DISCLOSURES PROPERTY OF EATON FILTRATION, LLC

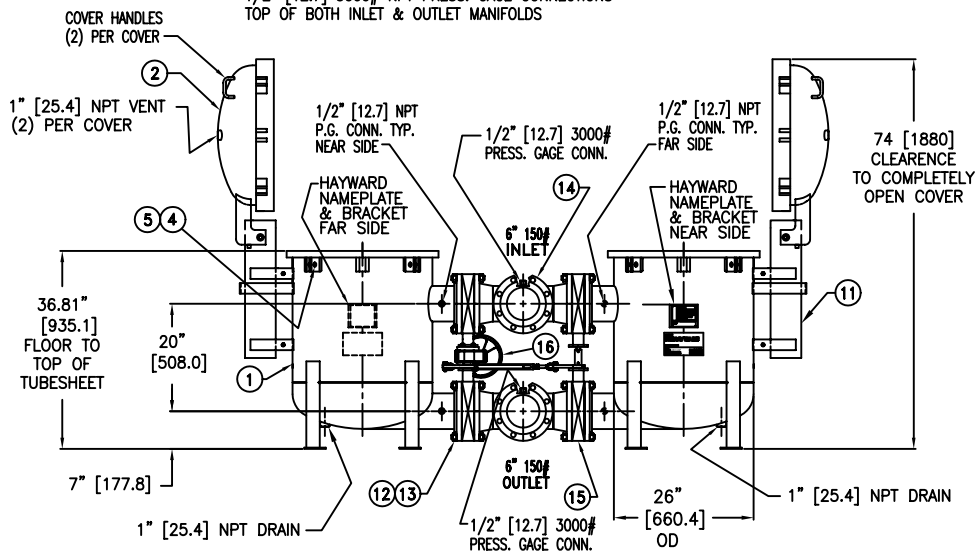
(4)  $\emptyset 3/4$  [19] BOLT HOLES  
ON  $\emptyset 22.13$  [562] BOLT CIRCLE



(4)  $\emptyset 3/4$  [19] BOLT HOLES  
ON  $\emptyset 22.13$  [562] BOLT CIRCLE



1/2" [12.7] 3000# NPT PRESS. GAGE CONNECTIONS  
TOP OF BOTH INLET & OUTLET MANIFOLDS



ITEM	PART NAME	MATERIAL
1	BODY	SA516 GR. 70
2	COVER	SA516 GR. 70
3	O-RING	BUNA-N
4	PIN	SA193 B7 ZINC PL
5	SNAP RING	STEEL ZINC PL
6	BASKET RESTRAINER	316 SS
7	FILTER BAG RETAINER	316 SS
8	EYE BOLT	SA193 B7 ZINC PL
9	HEX NUT	SA194 2H ZINC PL
10	WASHER	STEEL ZINC PL
11	SPRING ASSISTED MECHANISM	STAINLESS STEEL
12	MANIFOLD STUDS	SA193 B7 ZINC PL
13	MANIFOLD HEX NUTS	SA194 2H ZINC PL
14	MANIFOLDS (INLET & OUTLET)	CARBON STEEL
15	4" BUTTERFLY VALVES (SEE NOTE 7)	
16	GEAR OPERATOR & LINKAGE (SINGLE ACTING)	CARBON STEEL

### NOTES:

- UNITS ARE TO BE DESIGNED, FABRICATED & "U" STAMPED IN ACCORDANCE WITH ASME SECT. VIII, DIV. 1 BOILER & PRESSURE VESSEL CODE, IN COMPLIANCE TO LATEST ADDENDA.
- INLET / OUTLET FLANGE CONNECTIONS PER ANSI B 16.5.
- DESIGN PRESSURE: 150 PSI (MAWP) [10.34 BAR]  
DESIGN TEMPERATURE 250° F. [121° C]  
MDMT - -20° F @ 150 PSI [-28.9° C @ 10.34 BAR]
- ALL DIMENSIONS ARE IN INCHES & [MILLIMETERS]
- ALL BOLT HOLES ARE TO STRADDLE NATURAL CENTERLINES.
- APPROX. WEIGHT (DRY) 938 LB. (425.4 KG.)
- 4" BUTTERFLY VALVES WAFER STYLE:  
BRAY SERIES 30  
BODY-CAST IRON  
DISC-DUCTILE IRON  
STEM-SSTL  
SEATS-EPDM
- PAINT CARBON STEEL PER HAYWARD STANDARD ES-301.

CERTIFIED FOR:  
P.O. NO.:  
REG. NO.:  
VESSEL CODE: DMBF-0602-CS10-060A-UT-13HE-VAL-LINK  
HAYWARD PART NO.: F3AV0600301-B

**EATON FILTRATION, LLC**  
900 FAIRMOUNT AVENUE, ELIZABETH, NEW JERSEY 07207

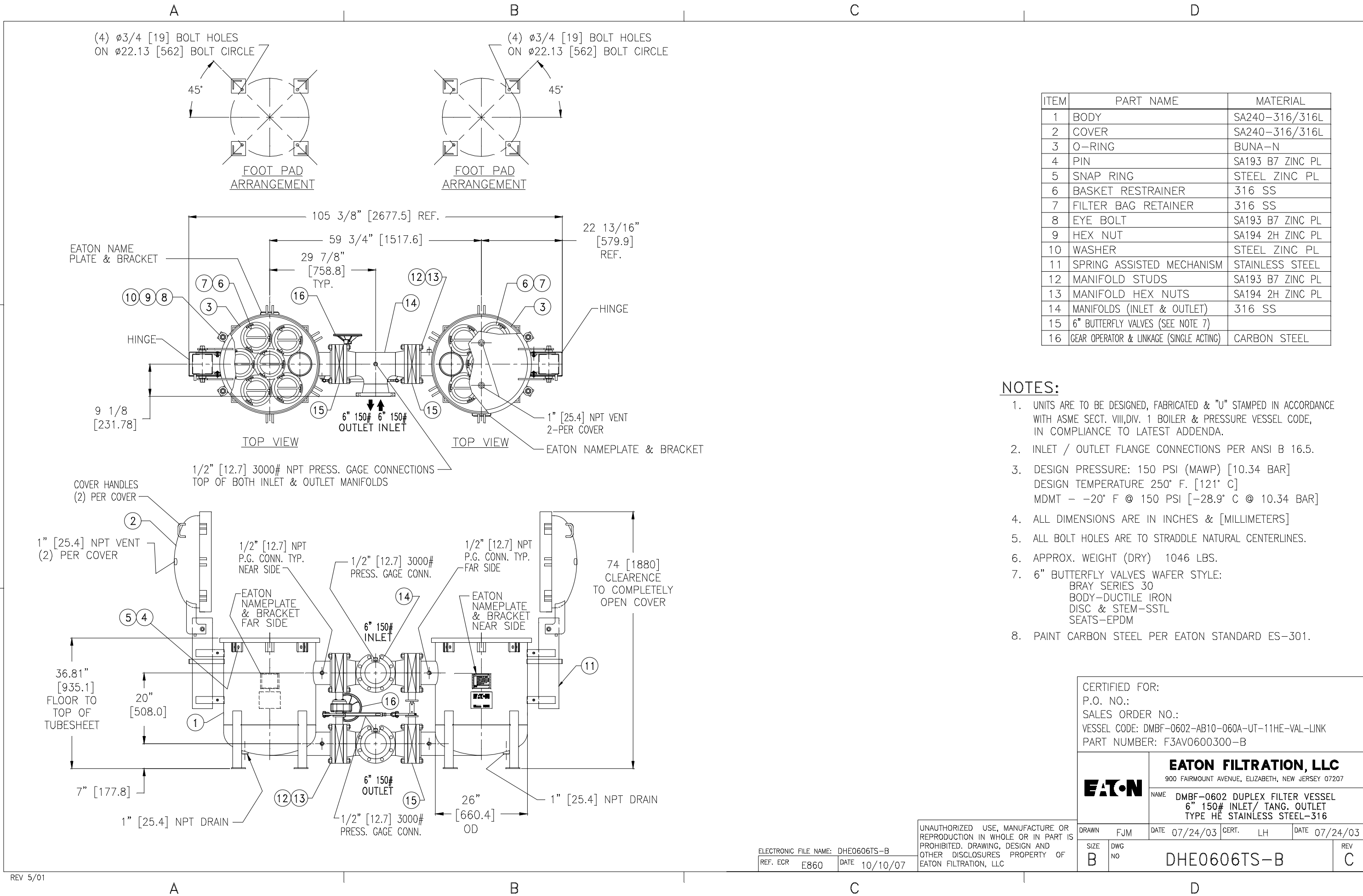
NAME: DMBF-0602 DUPLEX FILTER VESSEL  
6" 150# INLET / TANG. OUTLET  
TYPE HE CARBON STEEL

DRAWN: FJM DATE: 07/24/03 CERT. LH DATE: 07/24/03

SIZE: B DWG NO: DHE0606TC-B REV: B

UNAUTHORIZED USE, MANUFACTURE OR REPRODUCTION IN WHOLE OR IN PART IS PROHIBITED. DRAWING, DESIGN AND OTHER DISCLOSURES PROPERTY OF EATON FILTRATION, LLC

ELECTRONIC FILE NAME: DHE0606TC-B  
REF. EDR: D656 DATE: 01/09/06



ITEM	PART NAME	MATERIAL
1	BODY	SA240-316/316L
2	COVER	SA240-316/316L
3	O-RING	BUNA-N
4	PIN	SA193 B7 ZINC PL
5	SNAP RING	STEEL ZINC PL
6	BASKET RESTRAINER	316 SS
7	FILTER BAG RETAINER	316 SS
8	EYE BOLT	SA193 B7 ZINC PL
9	HEX NUT	SA194 2H ZINC PL
10	WASHER	STEEL ZINC PL
11	SPRING ASSISTED MECHANISM	STAINLESS STEEL
12	MANIFOLD STUDS	SA193 B7 ZINC PL
13	MANIFOLD HEX NUTS	SA194 2H ZINC PL
14	MANIFOLDS (INLET & OUTLET)	316 SS
15	6" BUTTERFLY VALVES (SEE NOTE 7)	
16	GEAR OPERATOR & LINKAGE (SINGLE ACTING)	CARBON STEEL

**NOTES:**

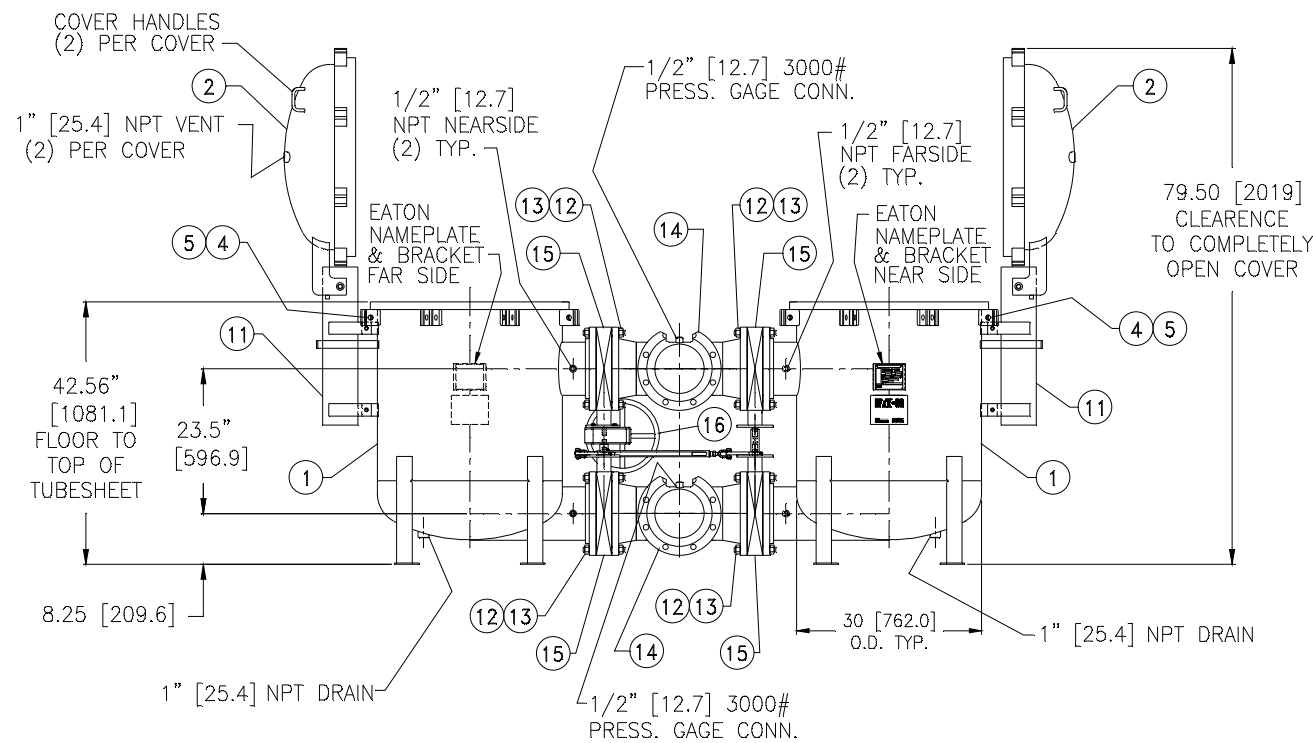
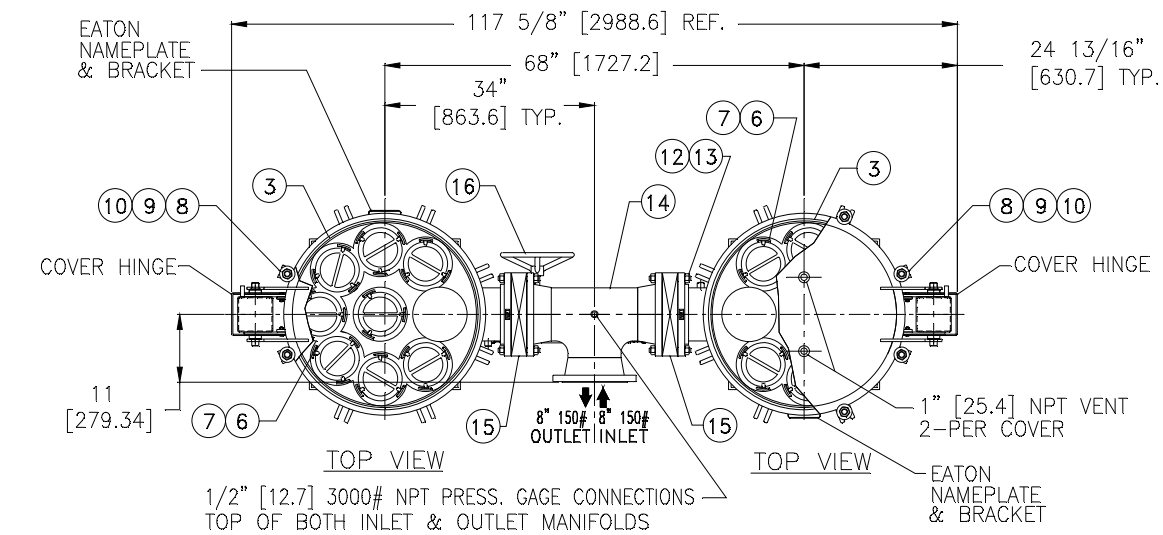
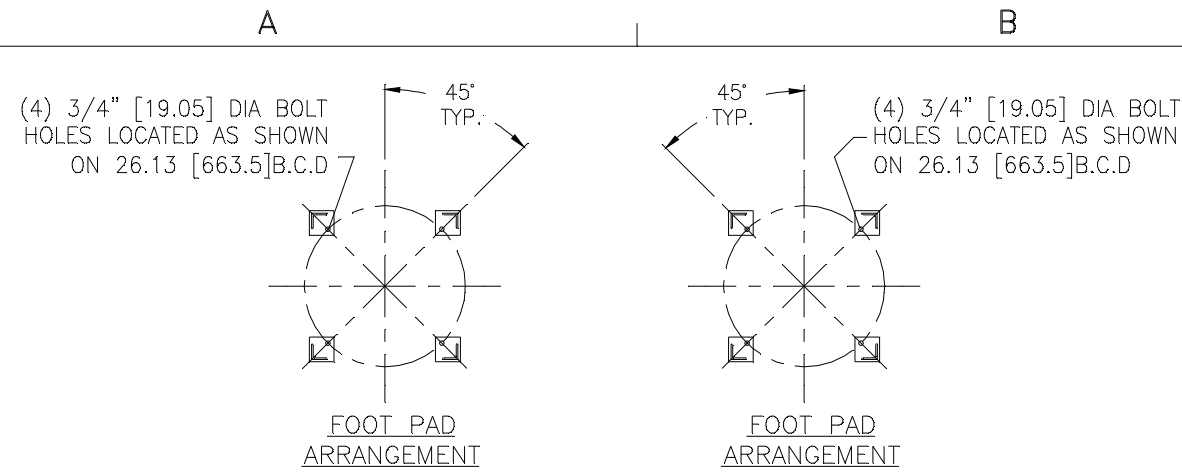
- UNITS ARE TO BE DESIGNED, FABRICATED & "U" STAMPED IN ACCORDANCE WITH ASME SECT. VIII, DIV. 1 BOILER & PRESSURE VESSEL CODE, IN COMPLIANCE TO LATEST ADDENDA.
- INLET / OUTLET FLANGE CONNECTIONS PER ANSI B 16.5.
- DESIGN PRESSURE: 150 PSI (MAWP) [10.34 BAR]  
DESIGN TEMPERATURE 250° F. [121° C]  
MDMT - -20° F @ 150 PSI [-28.9° C @ 10.34 BAR]
- ALL DIMENSIONS ARE IN INCHES & [MILLIMETERS]
- ALL BOLT HOLES ARE TO STRADDLE NATURAL CENTERLINES.
- APPROX. WEIGHT (DRY) 1046 LBS.
- 6" BUTTERFLY VALVES WAFER STYLE:  
BRAY SERIES 30  
BODY-DUCTILE IRON  
DISC & STEM-SSTL  
SEATS-EPDM
- PAINT CARBON STEEL PER EATON STANDARD ES-301.

CERTIFIED FOR:  
 P.O. NO.:  
 SALES ORDER NO.:  
 VESSEL CODE: DMBF-0602-AB10-060A-UT-11HE-VAL-LINK  
 PART NUMBER: F3AV0600300-B

		<b>EATON FILTRATION, LLC</b> 900 FAIRMOUNT AVENUE, ELIZABETH, NEW JERSEY 07207	
		NAME DMBF-0602 DUPLEX FILTER VESSEL 6" 150# INLET/ TANG. OUTLET TYPE HE STAINLESS STEEL-316	
DRAWN FJM SIZE B	DATE 07/24/03 DWG NO	CERT. LH DATE 07/24/03	REV C

ELECTRONIC FILE NAME: DHE0606TS-B  
 REF. ECR E860 DATE 10/10/07

UNAUTHORIZED USE, MANUFACTURE OR REPRODUCTION IN WHOLE OR IN PART IS PROHIBITED. DRAWING, DESIGN AND OTHER DISCLOSURES PROPERTY OF EATON FILTRATION, LLC



ITEM	PART NAME	MATERIAL
1	BODY	SA516 GR. 70
2	COVER	SA516 GR. 70
3	O-RING	BUNA-N
4	PIN	SA193 B7 ZINC PL
5	SNAP RING	STEEL ZINC PL
6	BASKET RESTRAINER	316 SS
7	FILTER BAG RETAINER	316 SS
8	EYE BOLT	SA193 B7 ZINC PL
9	HEX NUT	SA194 2H ZINC PL
10	WASHER	STEEL ZINC PL
11	SPRING ASSISTED MECHANISM	STAINLESS STEEL
12	MANIFOLD STUDS	SA193 B7 ZINC PL
13	MANIFOLD HEX NUTS	SA194 2H ZINC PL
14	MANIFOLDS (INLET & OUTLET)	CARBON STEEL
15	8" BUTTERFLY VALVES (SEE NOTE 7)	
16	GEAR OPERATOR & LINKAGE (SINGLE ACTING)	CARBON STEEL

**NOTES:**

- UNITS ARE TO BE DESIGNED, FABRICATED & "U" STAMPED IN ACCORDANCE WITH ASME SECT. VIII, DIV. 1 BOILER & PRESSURE VESSEL CODE, IN COMPLIANCE TO LATEST ADDENDA.
- INLET / OUTLET FLANGE CONNECTIONS PER ANSI B 16.5.
- DESIGN PRESSURE: 150 PSI (MAWP) [10.34 BAR]  
DESIGN TEMPERATURE 250° F. [121° C]  
MDMT - -20° F @ 150 PSI [-28.9° C @ 10.34 BAR]
- ALL DIMENSIONS ARE IN INCHES & [MILLIMETERS]
- ALL BOLT HOLES ARE TO STRADDLE NATURAL CENTERLINES.
- APPROX. WEIGHT (DRY) 1859 LBS [693.8 kgs]
- 8" BUTTERFLY VALVES WAFER STYLE:  
BRAY SERIES 30  
BODY-CAST IRON  
DISC-DUCTILE IRON  
STEM-SSTL  
SEATS-EPDM
- PAINT CARBON STEEL PER EATON STANDARD ES-301.

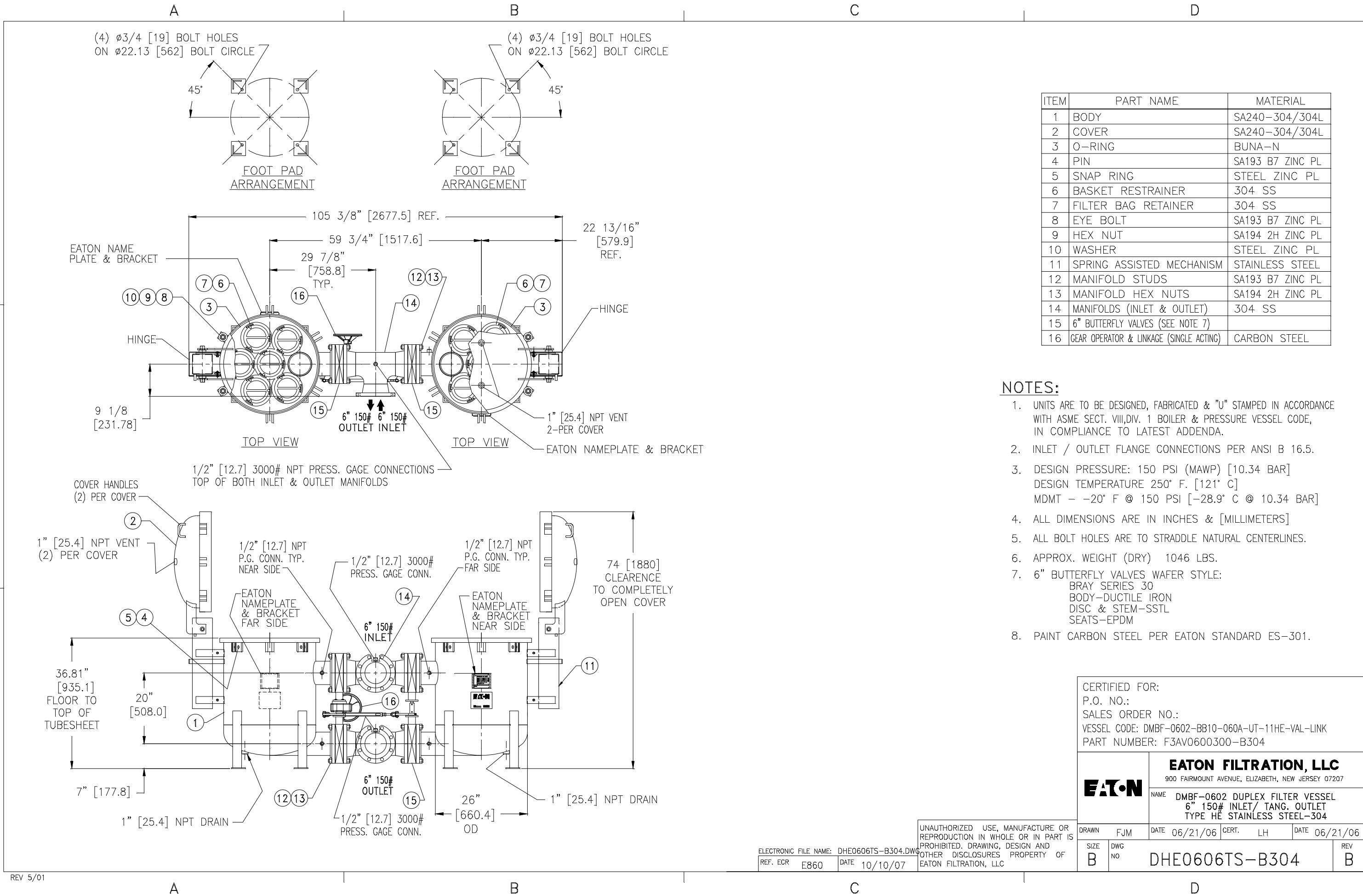
CERTIFIED FOR:  
P.O. NO.:  
SALES ORDER NO.:  
VESSEL CODE: DMBF-0802-CS10-080A-UT-13HE-VAL-LINK  
PART NUMBER: F3AV0800301-B

<b>EATON</b>		<b>EATON FILTRATION, LLC</b>	
		900 FAIRMOUNT AVENUE, ELIZABETH, NEW JERSEY 07207	
NAME		DMBF-0802 DUPLEX FILTER VESSEL 8" 150# INLET/ TANG. OUTLET TYPE HE CARBON STEEL	
DRAWN	FJM	DATE	07/23/03
CERT.	LH	DATE	07/23/03
SIZE	DWG NO	DHE0808TC-B	
B		REV	C

ELECTRONIC FILE NAME: DHE0808TC-B  
REF. ECR E860 DATE 10/10/07

UNAUTHORIZED USE, MANUFACTURE OR REPRODUCTION IN WHOLE OR IN PART IS PROHIBITED. DRAWING, DESIGN AND OTHER DISCLOSURES PROPERTY OF EATON FILTRATION, LLC





ITEM	PART NAME	MATERIAL
1	BODY	SA240-304/304L
2	COVER	SA240-304/304L
3	O-RING	BUNA-N
4	PIN	SA193 B7 ZINC PL
5	SNAP RING	STEEL ZINC PL
6	BASKET RESTRAINER	304 SS
7	FILTER BAG RETAINER	304 SS
8	EYE BOLT	SA193 B7 ZINC PL
9	HEX NUT	SA194 2H ZINC PL
10	WASHER	STEEL ZINC PL
11	SPRING ASSISTED MECHANISM	STAINLESS STEEL
12	MANIFOLD STUDS	SA193 B7 ZINC PL
13	MANIFOLD HEX NUTS	SA194 2H ZINC PL
14	MANIFOLDS (INLET & OUTLET)	304 SS
15	6" BUTTERFLY VALVES (SEE NOTE 7)	
16	GEAR OPERATOR & LINKAGE (SINGLE ACTING)	CARBON STEEL

**NOTES:**

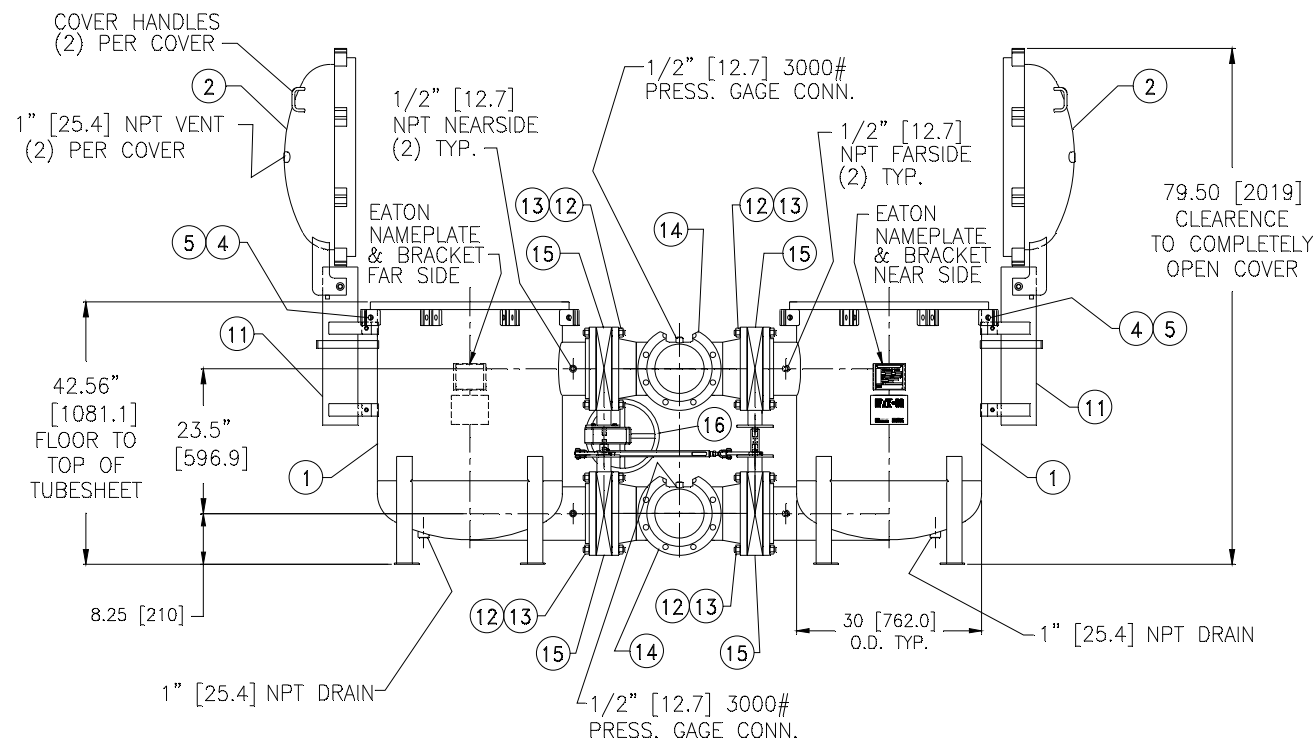
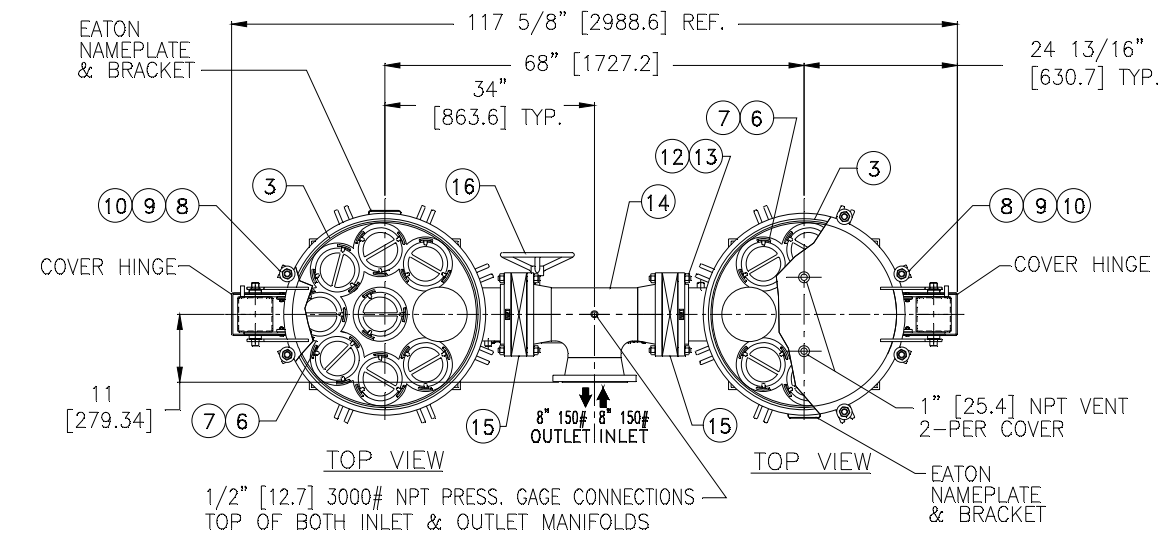
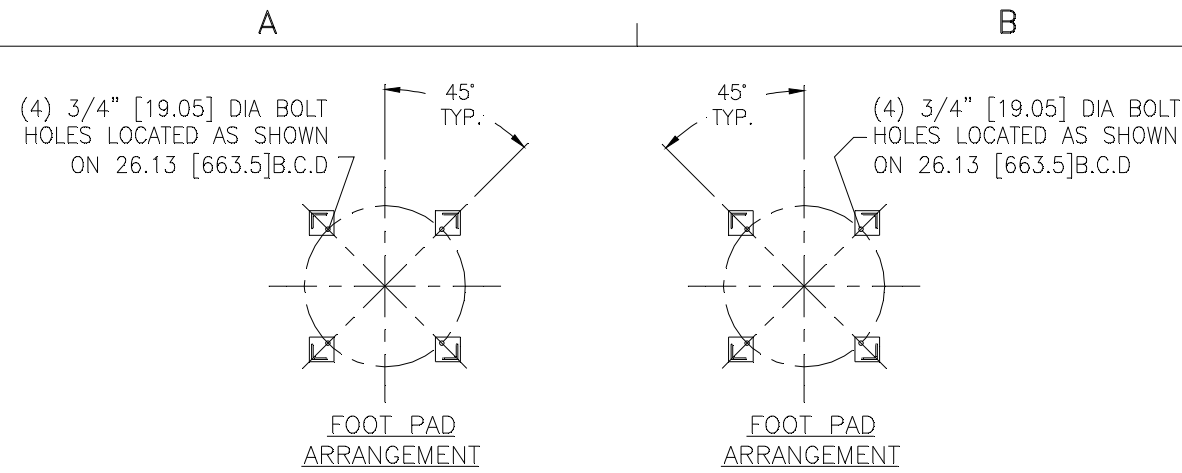
- UNITS ARE TO BE DESIGNED, FABRICATED & "U" STAMPED IN ACCORDANCE WITH ASME SECT. VIII, DIV. 1 BOILER & PRESSURE VESSEL CODE, IN COMPLIANCE TO LATEST ADDENDA.
- INLET / OUTLET FLANGE CONNECTIONS PER ANSI B 16.5.
- DESIGN PRESSURE: 150 PSI (MAWP) [10.34 BAR]  
DESIGN TEMPERATURE 250° F. [121° C]  
MDMT - -20° F @ 150 PSI [-28.9° C @ 10.34 BAR]
- ALL DIMENSIONS ARE IN INCHES & [MILLIMETERS]
- ALL BOLT HOLES ARE TO STRADDLE NATURAL CENTERLINES.
- APPROX. WEIGHT (DRY) 1046 LBS.
- 6" BUTTERFLY VALVES WAFER STYLE:  
BRAY SERIES 30  
BODY-DUCTILE IRON  
DISC & STEM-SSTL  
SEATS-EPDM
- PAINT CARBON STEEL PER EATON STANDARD ES-301.

CERTIFIED FOR:  
 P.O. NO.:  
 SALES ORDER NO.:  
 VESSEL CODE: DMBF-0602-BB10-060A-UT-11HE-VAL-LINK  
 PART NUMBER: F3AV0600300-B304

		<b>EATON FILTRATION, LLC</b> 900 FAIRMOUNT AVENUE, ELIZABETH, NEW JERSEY 07207	
		NAME DMBF-0602 DUPLEX FILTER VESSEL 6" 150# INLET/ TANG. OUTLET TYPE HE STAINLESS STEEL-304	
DRAWN FJM SIZE B	DATE 06/21/06 DWG NO DHE0606TS-B304	CERT. LH REV B	DATE 06/21/06

UNAUTHORIZED USE, MANUFACTURE OR REPRODUCTION IN WHOLE OR IN PART IS PROHIBITED. DRAWING, DESIGN AND OTHER DISCLOSURES PROPERTY OF EATON FILTRATION, LLC

ELECTRONIC FILE NAME: DHE0606TS-B304.DWG  
 REF. ECR E860 DATE 10/10/07



ITEM	PART NAME	MATERIAL
1	BODY	SA240-316/316L
2	COVER	SA240-316/316L
3	O-RING	BUNA-N
4	PIN	SA193 B7 ZINC PL
5	SNAP RING	STEEL ZINC PL
6	BASKET RESTRAINER	316 SS
7	FILTER BAG RETAINER	316 SS
8	EYE BOLT	SA193 B7 ZINC PL
9	HEX NUT	SA194 2H ZINC PL
10	WASHER	STEEL ZINC PL
11	SPRING ASSISTED MECHANISM	STAINLESS STEEL
12	MANIFOLD STUDS	SA193 B7 ZINC PL
13	MANIFOLD HEX NUTS	SA194 2H ZINC PL
14	MANIFOLDS (INLET & OUTLET)	316 SS
15	8" BUTTERFLY VALVES (SEE NOTE 7)	
16	GEAR OPERATOR & LINKAGE (SINGLE ACTING)	CARBON STEEL

**NOTES:**

1. UNITS ARE TO BE DESIGNED, FABRICATED & "U" STAMPED IN ACCORDANCE WITH ASME SECT. VIII, DIV. 1 BOILER & PRESSURE VESSEL CODE, IN COMPLIANCE TO LATEST ADDENDA.
2. INLET / OUTLET FLANGE CONNECTIONS PER ANSI B 16.5.
3. DESIGN PRESSURE: 150 PSI (MAWP) [10.34 BAR]  
DESIGN TEMPERATURE 250° F. [121° C]  
MDMT - -20° F @ 150 PSI [-28.9° C @ 10.34 BAR]
4. ALL DIMENSIONS ARE IN INCHES & [MILLIMETERS]
5. ALL BOLT HOLES ARE TO STRADDLE NATURAL CENTERLINES.
6. APPROX. WEIGHT (DRY) 1859 LBS [693.8 kgs]
7. 8" BUTTERFLY VALVES WAFER STYLE:  
BRAY SERIES 30  
BODY-DUCTILE IRON  
DISC & STEM-SSTL  
SEATS-EPDM
8. PAINT CARBON STEEL PER EATON STANDARD ES-301.

CERTIFIED FOR:  
P.O. NO.:  
SALES ORDER NO.:  
VESSEL CODE: DMBF-0802-AB10-080A-UT-11HE-VAL-LINK  
PART NUMBER: F3AV0800300-B

<b>EATON</b>	<b>EATON FILTRATION, LLC</b>	
	900 FAIRMOUNT AVENUE, ELIZABETH, NEW JERSEY 07207	
NAME		DMBF-0802 DUPLEX FILTER VESSEL 8" 150# INLET/ TANG. OUTLET TYPE HE STAINLESS STEEL-316

DRAWN	FJM	DATE	07/23/03	CERT.	LH	DATE	07/23/03
SIZE	DWG	DHE0808TS-B				REV	C
B	NO						

ELECTRONIC FILE NAME: DHE0808TS-B  
REF. ECR E860 DATE 10/10/07

UNAUTHORIZED USE, MANUFACTURE OR REPRODUCTION IN WHOLE OR IN PART IS PROHIBITED. DRAWING, DESIGN AND OTHER DISCLOSURES PROPERTY OF EATON FILTRATION, LLC