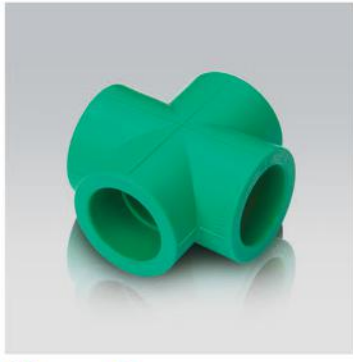
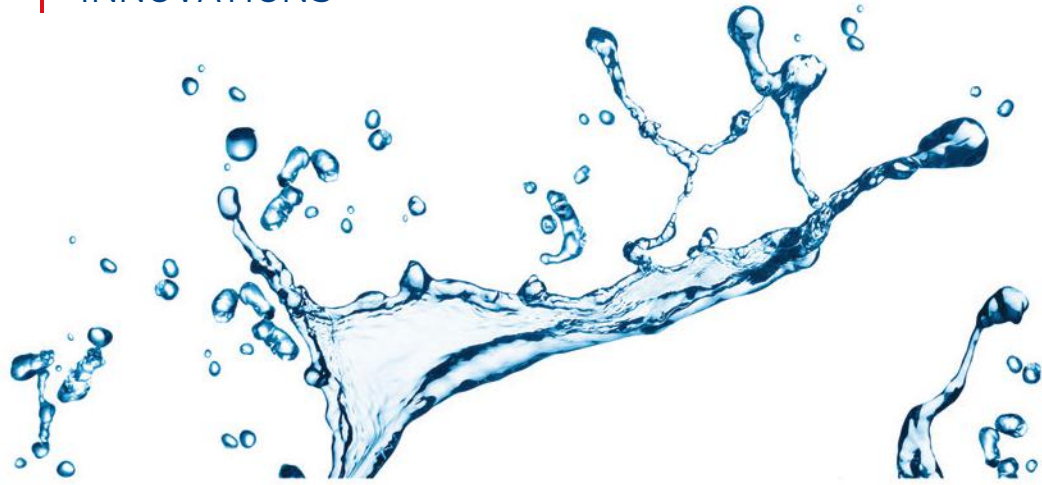




UNLIMITED
INNOVATIONS

Distributed by



BLUE OCEAN PP-R POLYMER PIPING SYSTEMS

Polypropylene random copolymer (PP-R) pipes, fittings and accessories for hot, cold and potable water for domestic and industrial installations, water heating system installations, under floor and wall heating, individual and central air-conditioning systems and polymer piping systems for shipbuilding

PRODUCT CATALOGUE

Edition No 012EN-G





Blue Ocean

UNLIMITED
INNOVATIONS

Blue Ocean Industrial Development (UK) Group Limited is a group of companies founded in London, United Kingdom.

Blue Ocean Group is one of the biggest manufacturers of indoor polymer piping systems, welding equipment for polymer piping systems, extrusion equipment, molds and polymer processing equipment.

Strict quality control, years of experience, constant research of new technologies and high quality customer service - these are the main factors that make Blue Ocean Group one of the leading companies in polymer piping systems products production and business in the world.

All our products are made in compliance with international standards and are tested in special certified laboratories, our main products are certified by SKZ Certification Body (Germany), KIWA Certification Body (Netherlands), DVGW Certification Body (Germany), WRAS (UK), ICC-ES PMG/ ANSI Certification Body (USA), AENOR Certification Body (Spain), ilac-MRA CNAS (China) and SANAS (South Africa). Our welding equipment, valves and accessories are certified by CE Certification in Italy.

We value our clients and we do our best to support them and all their needs with creative and intelligent solutions.

Products of our Group of companies can be found in more than 50 countries all over the world.



All production companies of Blue Ocean Industrial Development (UK) Group Limited are certified with the following ISO standards:

ISO 9001:2015	Certification of Quality Management System
ISO 14001:2015	Certification of Environmental Management System
OHSAS 28001:2007	Certification of Occupational Health and Safety Management System

All Blue Ocean Industrial Development (UK) Group Limited piping system products are certified with:

- SKZ Certification (Germany): Certificate No A528 for Multilayer pipes made of PE-RT/AL/ PP-R
- SKZ Certification (Germany): Certificate No A529 for Pipes and fittings made of polypropylene PP-R
- SKZ Certification (Germany): Certificate No A653 for Glass fiber multilayer pipes made of PP-R/ PP-R-GF/ PP-R
- KIWA Certification (The Netherlands): Certificate No K87677/ 02 for Blue Ocean PP-R polymer piping system
- KIWA Certification (The Netherlands): Certificate No K87667/ 01 for Blue Ocean PP-R polymer pipes
- KIWA Certification (The Netherlands): Certificate No K87668/ 02 for Blue Ocean PP-R polymer fittings
- DVGW Certification (Germany): Certificate No DW-8501CQ0416 for Blue Ocean PP-R piping system
- DVGW Certification (Germany): Certificate No DW-8317CQ0415 for Blue Ocean PP-R pipes
- WRAS Certification (United Kingdom): Certificate No 1607342 for Blue Ocean PPR system
- ECM Certification (Italy): Certificate No 110311/ QB0140 CE certificate for Blue Ocean PP-R socket welders
- CEPREI Certification (International): Certificate No E3 032035 01, CE certificate for ball valves (Standard EN 13828:2003)
- ICC-ES/ ANSI (USA): Certificate No PMG-1403KW for Blue Ocean Polypropylene (PP-R) Piping System (ASTM F 2389-2017a, NSF/ ANSI 14-2016a and NSF/ ANSI 61-2016 standards)
- AENOR Certification (Spain): Certificate No 001/006765: Blue Ocean PP-R polymer pipes
- AENOR Certification (Spain): Certificate No 001/006818: Blue Ocean PP-R polymer fittings
- AENOR Certification (Spain): Certificate No 001/006765: Blue Ocean PP-R polymer piping system
- SANAS - AENOR Certification (South Africa - Spain): Certificate No 001/006783: Blue Ocean PP-R polymer pipes

BLUE OCEAN pipes from PP-R, PERT and multi-layer composite pipes



PP-R pipes for cold water and drinking water transportation (Recommended water working temperature up to 60°C, S5 series, SDR 11, Nominal pressure up to PN. 1.0 MPa)

Product code	Outside diameter, mm	Wall thickness, mm	Pipes serial	Nominal pressure, MPa	Quantity per package, pieces / m (Each piece 4 m)
PPR-CW(X)/S5/16x1.8	16	1.8	S5	1.0	50/200
PPR-CW(X)/S5/20x1.9	20	1.9	S5	1.0	40/160
PPR-CW(X)/S5/25x2.3	25	2.3	S5	1.0	25/100
PPR-CW(X)/S5/32x2.9	32	2.9	S5	1.0	15/60
PPR-CW(X)/S5/40x3.7	40	3.7	S5	1.0	12/48
PPR-CW(X)/S5/50x4.6	50	4.6	S5	1.0	8/32
PPR-CW(X)/S5/63x5.8	63	5.8	S5	1.0	5/20
PPR-CW(X)/S5/75x6.8	75	6.8	S5	1.0	3/12
PPR-CW(X)/S5/90x8.2	90	8.2	S5	1.0	2/8
PPR-CW(X)/S5/110x10.0	110	10	S5	1.0	2/8
PPR-CW(X)/S5/125x11.4	125	11.4	S5	1.0	1/4
PPR-CW(X)/S5/140x12.7	140	12.7	S5	1.0	1/4
PPR-CW(X)/S5/160x14.6	160	14.6	S5	1.0	1/4
The following items* are supplied in coils					
PPR-CW(X)/S5/16x1.8 - c	16	1.8	S5	1.0	100
PPR-CW(X)/S5/20x1.9 - c	20	1.9	S5	1.0	100
PPR-CW(X)/S5/25x2.3 - c	25	2.3	S5	1.0	50



PP-R pipes for cold water and drinking water transportation (Recommended water working temperature up to 60°C, S4 series, SDR 9, Nominal pressure up to PN. 1.25 MPa)

Product code	Outside diameter, mm	Wall thickness, mm	Pipes serial	Nominal pressure, MPa	Quantity per package, pieces / m (Each piece 4 m)
PPR-CW(X)/S4/16x2.0	16	2	S4	1.25	50/200
PPR-CW(X)/S4/20x2.3	20	2.3	S4	1.25	40/160
PPR-CW(X)/S4/25x2.8	25	2.8	S4	1.25	25/100
PPR-CW(X)/S4/32x3.6	32	3.6	S4	1.25	15/60
PPR-CW(X)/S4/40x4.5	40	4.5	S4	1.25	12/48
PPR-CW(X)/S4/50x5.6	50	5.6	S4	1.25	8/32
PPR-CW(X)/S4/63x7.1	63	7.1	S4	1.25	5/20
PPR-CW(X)/S4/75x8.4	75	8.4	S4	1.25	3/12
PPR-CW(X)/S4/90x10.1	90	10.1	S4	1.25	2/8
PPR-CW(X)/S4/110x12.3	110	12.3	S4	1.25	2/8
PPR-CW(X)/S4/125x14.0	125	14	S4	1.25	1/4
PPR-CW(X)/S4/140x15.7	140	15.7	S4	1.25	1/4
PPR-CW(X)/S4/160x17.9	160	17.9	S4	1.25	1/4
The following items* are supplied in coils					
PPR-CW(X)/S4/16x2.0 - c	16	2.0	S4	1.25	100
PPR-CW(X)/S4/20x2.3 - c	20	2.3	S4	1.25	100
PPR-CW(X)/S4/25x2.8 - c	25	2.8	S4	1.25	50

The product produced according to the international Standard ISO: EN ISO 15874:2013
 German Standards: DIN 8077:2008; DIN 8078:2008; DIN 16962
 American Standards: ASTM F 2389-2017a; NSF/ANSI 14-2016a; NSF/ANSI 61-2016

BLUE OCEAN pipes from PP-R, PERT and multi-layer composite pipes



PP-R pipes for hot, cold and drinking water transportation (Recommended water working temperature up to 70°C, water short time high temperature up to 90°C, S3.2 series, SDR 7.4, Nominal pressure up to PN. 1.6 MPa)

Product code	Outside diameter, mm	Wall thickness, mm	Pipes serial	Nominal pressure, MPa	Quantity per package, pieces / m (Each piece 4 m)
PPR-HW(X)/S3.2/16x2.2	16	2.2	S3.2	1.6	50/200
PPR-HW(X)/S3.2/20x2.8	20	2.8	S3.2	1.6	40/160
PPR-HW(X)/S3.2/25x3.5	25	3.5	S3.2	1.6	25/100
PPR-HW(X)/S3.2/32x4.4	32	4.4	S3.2	1.6	15/60
PPR-HW(X)/S3.2/40x5.5	40	5.5	S3.2	1.6	12/48
PPR-HW(X)/S3.2/50x6.9	50	6.9	S3.2	1.6	8/32
PPR-HW(X)/S3.2/63x8.6	63	8.6	S3.2	1.6	5/20
PPR-HW(X)/S3.2/75x10.3	75	10.3	S3.2	1.6	3/12
PPR-HW(X)/S3.2/90x12.3	90	12.3	S3.2	1.6	2/8
PPR-HW(X)/S3.2/110x15.1	110	15.1	S3.2	1.6	2/8
PPR-HW(X)/S3.2/125x17.1	125	17.1	S3.2	1.6	1/4
PPR-HW(X)/S3.2/140x19.2	140	19.2	S3.2	1.6	1/4
PPR-HW(X)/S3.2/160x21.9	160	21.9	S3.2	1.6	1/4
The following items* are supplied in coils					
PPR-HW(X)/S3.2/16x2.2 - c	16	2.2	S3.2	1.6	100
PPR-HW(X)/S3.2/20x2.8 - c	20	2.8	S3.2	1.6	100
PPR-HW(X)/S3.2/25x3.5 - c	25	3.5	S3.2	1.6	50



PP-R pipes for hot, cold and drinking water transportation (Recommended water working temperature up to 70°C, water short time high temperature up to 90°C, S2.5 series, SDR 6, Nominal pressure up to PN. 2.0 MPa)

Product code	Outside diameter, mm	Wall thickness, mm	Pipes serial	Nominal pressure, MPa	Quantity per package, pieces / m (Each piece 4 m)
PPR-HW(X)/S2.5/16x2.7	16	2.7	S2.5	2.0	50/200
PPR-HW(X)/S2.5/20x3.4	20	3.4	S2.5	2.0	40/160
PPR-HW(X)/S2.5/25x4.2	25	4.2	S2.5	2.0	25/100
PPR-HW(X)/S2.5/32x5.4	32	5.4	S2.5	2.0	15/60
PPR-HW(X)/S2.5/40x6.7	40	6.7	S2.5	2.0	12/48
PPR-HW(X)/S2.5/50x8.3	50	8.3	S2.5	2.0	8/32
PPR-HW(X)/S2.5/63x10.5	63	10.5	S2.5	2.0	5/20
PPR-HW(X)/S2.5/75x12.5	75	12.5	S2.5	2.0	3/12
PPR-HW(X)/S2.5/90x15.0	90	15	S2.5	2.0	2/8
PPR-HW(X)/S2.5/110x18.3	110	18.3	S2.5	2.0	2/8
PPR-HW(X)/S2.5/125x20.8	125	20.8	S2.5	2.0	1/4
PPR-HW(X)/S2.5/140x23.3	140	23.3	S2.5	2.0	1/4
PPR-HW(X)/S2.5/160x26.6	160	26.6	S2.5	2.0	1/4
The following items* are supplied in coils					
PPR-HW(X)/S2.5/16x2.7 - c	16	2.7	S2.5	2.0	100
PPR-HW(X)/S2.5/20x3.4 - c	20	3.4	S2.5	2.0	100
PPR-HW(X)/S2.5/25x4.2 - c	25	4.2	S2.5	2.0	50



UNLIMITED INNOVATIONS

The product produced according to the international Standard ISO: EN ISO 15874:2013
 German Standards: DIN 8077:2008; DIN 8078:2008; DIN 16962
 American Standards: ASTM F 2389-2017a; NSF/ANSI 14-2016a; NSF/ANSI 61-2016



BLUE OCEAN pipes from PP-R, PERT and multi-layer composite pipes

Blue Ocean Fiber-G (PP-R/ PP-R @ Glass Fiber compound/PP-R) composite pipes for hot and cold water transportation (Recommended water working temperature up to 70°C, water short time high temperature up to 90°C, S4 series, SDR 9, Nominal pressure up to PN.



Product code	Outside diameter, mm	Wall thickness, mm	Pipes serial	Nominal pressure, MPa	Quantity per package, pieces / m (Each piece 4 m)
PPR-Fiber-G-HW(X)/S4.0/20x2.3	20	2.3	S4	1.6	40/ 160
PPR-Fiber-G-HW(X)/S4.0/25x2.8	25	2.8	S4	1.6	25/ 100
PPR-Fiber-G-HW(X)/S4.0/32x3.6	32	3.6	S4	1.6	15/ 60
PPR-Fiber-G-HW(X)/S4.0/40x4.5	40	4.5	S4	1.6	12/ 48
PPR-Fiber-G-HW(X)/S4.0/50x5.6	50	5.6	S4	1.6	8/ 32
PPR-Fiber-G-HW(X)/S4.0/63x7.1	63	7.1	S4	1.6	5/ 20
PPR-Fiber-G-HW(X)/S4.0/75x8.4	75	8.4	S4	1.6	3/ 12
PPR-Fiber-G-HW(X)/S4.0/90x10.1	90	10.1	S4	1.6	2/ 8
PPR-Fiber-G-HW(X)/S4.0/110x12.3	110	12.3	S4	1.6	2/ 8
PPR-Fiber-G-HW(X)/S4.0/125x14.0	125	14.0	S4	1.6	1/ 4
PPR-Fiber-G-HW(X)/S4.0/140x15.7	140	15.7	S4	1.6	1/ 4
PPR-Fiber-G-HW(X)/S4.0/160x17.9	160	17.9	S4	1.6	1/ 4

Blue Ocean Fiber-G (PP-R/ PP-R @ Glass Fiber compound/PP-R) composite pipes for hot and cold water transportation (Recommended water working temperature up to 70°C, water short time high temperature up to 90°C, S3.2 series, SDR 7.4, Nominal pressure up to PN. 2.0 MPa)



Product code	Outside diameter, mm	Wall thickness, mm	Pipes serial	Nominal pressure, MPa	Quantity per package, pieces / m (Each piece 4 m)
PPR-Fiber-G-HW(X)/S3.2/20x2.8	20	2.8	S3.2	2.0	40/160
PPR-Fiber-G-HW(X)/S3.2/25x3.5	25	3.5	S3.2	2.0	25/100
PPR-Fiber-G-HW(X)/S3.2/32x4.4	32	4.4	S3.2	2.0	15/60
PPR-Fiber-G-HW(X)/S3.2/40x5.5	40	5.5	S3.2	2.0	12/48
PPR-Fiber-G-HW(X)/S3.2/50x6.9	50	6.9	S3.2	2.0	8/32
PPR-Fiber-G-HW(X)/S3.2/63x8.6	63	8.6	S3.2	2.0	5/20
PPR-Fiber-G-HW(X)/S3.2/75x10.3	75	10	S3.2	2.0	3/12
PPR-Fiber-G-HW(X)/S3.2/90x12.3	90	12.3	S3.2	2.0	2/8
PPR-Fiber-G-HW(X)/S3.2/110x15.1	110	15.1	S3.2	2.0	2/8
PPR-Fiber-G-HW(X)/S3.2/125x17.1	125	17.1	S3.2	2.0	1/4
PPR-Fiber-G-HW(X)/S3.2/140x19.2	140	19.2	S3.2	2.0	1/4
PPR-Fiber-G-HW(X)/S3.2/160x21.9	160	21.9	S3.2	2.0	1/4

The product produced according to the international Standard ISO: EN ISO 15874:2013
 German Standards: DIN 8077:2008; DIN 8078:2008; DIN 16962
 American Standards: ASTM F 2389-2017a; NSF/ANSI 14-2016a; NSF/ANSI 61-2016

BLUE OCEAN pipes from PP-R, PERT and multi-layer composite pipes

Blue Ocean Fiber-G (PP-R/ PP-R @ Glass Fiber compound/PP-R) composite pipes for hot and cold water transportation (Recommended water working temperature up to 70°C, water short time high temperature up to 90°C, S2.5 series, SDR 6, Nominal pressure up to PN. 2.5 MPa)



Product code	Outside diameter, mm	Wall thickness, mm	Pipes serial	Nominal pressure, MPa	Quantity per package, pieces / m (Each piece 4 m)
PPR-Fiber-G-HW(X)/S2.5/20x3.4	20	3.4	S2.5	2.5	40/160
PPR-Fiber-G-HW(X)/S2.5/25x4.2	25	4.2	S2.5	2.5	25/100
PPR-Fiber-G-HW(X)/S2.5/32x5.4	32	5.4	S2.5	2.5	15/60
PPR-Fiber-G-HW(X)/S2.5/40x6.7	40	6.7	S2.5	2.5	12/48
PPR-Fiber-G-HW(X)/S2.5/50x8.3	50	8.3	S2.5	2.5	8/32
PPR-Fiber-G-HW(X)/S2.5/63x10.5	63	10.5	S2.5	2.5	5/20

Blue Ocean T-fusion outer layer thermo-fusion PP-R/AL/PP-R overlap welded aluminum layer composite pipe for cold and hot water transportation, water heating (Recommended water working temperature up to 70°C, water short time high temperature up to 90°C, Nominal pressure up to PN. 2.5 MPa)



Product code	Outside diameter, mm	Wall thickness, mm	Pipes serial	Nominal pressure, MPa	Quantity per package, pieces / m (Each piece 4 m)
PPR-AL-PPR (X) OLW - 20x3.0/2.5	20	3.0	PP-R/AL-OLW	2.5	40/160
PPR-AL-PPR (X) OLW - 25x3.25/2.5	25	3.25	PP-R/AL-OLW	2.5	25/100
PPR-AL-PPR (X) OLW - 32x4.0/2.5	32	4.0	PP-R/AL-OLW	2.5	15/60
PPR-AL-PPR (X) OLW - 40x5.0/2.5	40	5.0	PP-R/AL-OLW	2.5	12/48
PPR-AL-PPR (X) OLW - 50x5.5/2.5	50	5.5	PP-R/AL-OLW	2.5	8/32
PPR-AL-PPR (X) OLW - 63x7.0/2.5	63	7.0	PP-R/AL-OLW	2.5	5/20
PPR-AL-PPR (X) OLW - 75x8.5/2.5	75	8.5	PP-R/AL-OLW	2.5	3/12
The following items* are supplied in coils					
PPR-AL-PPR (X) OLW - 20x3.0/2.5 - c	20	3.0	PP-R/AL-OLW	2.5	100
PPR-AL-PPR (X) OLW - 25x3.25/2.5 - c	25	3.25	PP-R/AL-OLW	2.5	50

Blue Ocean T-fusion outer layer thermo-fusion PERT/AL/PP-R overlap welded aluminum layer composite pipe for cold and hot water transportation, water heating (Recommended water working temperature up to 70°C, water short time high temperature up to 90°C, Nominal pressure up to PN. 2.5 MPa)



Product code	Outside diameter, mm	Wall thickness, mm	Pipes serial	Nominal pressure, MPa	Quantity per package, pieces / m (Each piece 4 m)
PPR-AL-PERT (X) OLW - 20x3.0/2.5	20	3.0	PP-R/AL-OLW	2.5	40/160
PPR-AL-PERT (X) OLW - 25x3.25/2.5	25	3.25	PP-R/AL-OLW	2.5	25/100
PPR-AL-PERT (X) OLW - 32x4.0/2.5	32	4.0	PP-R/AL-OLW	2.5	15/60
PPR-AL-PERT (X) OLW - 40x5.0/2.5	40	5.0	PP-R/AL-OLW	2.5	12/48
PPR-AL-PERT (X) OLW - 50x5.5/2.5	50	5.5	PP-R/AL-OLW	2.5	8/32
PPR-AL-PERT (X) OLW - 63x7.0/2.5	63	7.0	PP-R/AL-OLW	2.5	5/20
PPR-AL-PERT (X) OLW - 75x8.5/2.5	75	8.5	PP-R/AL-OLW	2.5	3/12
The following items* are supplied in coils					
PPR-AL-PERT (X) OLW - 20x3.0/2.5 - c	20	3.0	PP-R/AL-OLW	2.5	100
PPR-AL-PERT (X) OLW - 25x3.25/2.5 - c	25	3.25	PP-R/AL-OLW	2.5	50



UNLIMITED INNOVATIONS

The product produced according to the international Standard ISO: EN ISO 15874:2013
 German Standards: DIN 8077:2008; DIN 8078:2008; DIN 16962
 American Standards: ASTM F 2389-2017a; NSF/ANSI 14-2016a; NSF/ANSI 61-2016



BLUE OCEAN pipes from PP-R, PERT and multi-layer composite pipes



Blue Ocean S-fusion outer layer thermo-fusion PP-R/AL/PP-R butt welded aluminum layer composite pipe for cold and hot water transportation, water heating (Recommended water working temperature up to 70°C, water short time high temperature up to 90°C, Nominal pressure up to PN. 2.5 MPa)

Product code	Outside diameter, mm	Wall thickness, mm	Pipes serial	Nominal pressure, MPa	Quantity per package, pieces / m (Each piece 4 m)
PPR-AL-PPR (X)/BW-20x3.0/2.5	20	3.0	PP-R/AL-BW	2.5	40/160
PPR-AL-PPR (X)/BW-25x3.5/2.5	25	3.5	PP-R/AL-BW	2.5	25/100
PPR-AL-PPR (X)/BW-32x4.0/2.5	32	4.0	PP-R/AL-BW	2.5	15/60
PPR-AL-PPR (X)/BW-40x5.0/2.5	40	5.0	PP-R/AL-BW	2.5	12/48
PPR-AL-PPR (X)/BW-50x5.5/2.5	50	5.5	PP-R/AL-BW	2.5	8/32
PPR-AL-PPR (X)/BW-63x7.0/2.5	63	7.0	PP-R/AL-BW	2.5	5/20
PPR-AL-PPR (X)/BW-75x8.5/2.5	75	8.5	PP-R/AL-BW	2.5	3/12
PPR-AL-PPR (X)/BW-90x10.0/2.5	90	10.0	PP-R/AL-BW	2.5	2/8
PPR-AL-PPR (X)/BW-110x12.0/2.5	110	12.0	PP-R/AL-BW	2.5	2/8



Blue Ocean STABI - 1 PP-R/AL/PP-R composite pipes for hot and cold water transportation and water heating (Recommended water working temperature up to 70°C, water short time high temperature up to 90°C, S3.2 series (inner pipe), SDR 7.4, Nominal pressure up to PN. 2.0 MPa) - aluminum foil without perforation

Product code	Inner pipe outside diameter, mm	Inner pipe wall thickness, mm	Inner pipe Serial	Nominal pressure, MPa	Quantity per package, pieces / m (Each piece 4 m)
PAP (X) BO-Stabi -1 - 20x2.8/ 3.7	20	2.8	S3.2	2.0	40/160
PAP (X) BO-Stabi -1 - 25x3.5/ 4.5	25	3.5	S3.2	2.0	25/100
PAP (X) BO-Stabi -1 - 32x4.5/ 5.5	32	4.5	S3.2	2.0	15/60
PAP (X) BO-Stabi -1 - 40x5.6/ 6.7	40	5.6	S3.2	2.0	12/48
PAP (X) BO-Stabi -1 - 50x6.9/ 8.0	50	6.9	S3.2	2.0	8/32
PAP (X) BO-Stabi -1 - 63x8.7/ 9.9	63	8.7	S3.2	2.0	5/20



Blue Ocean STABI - 2 PP-R/AL/PP-R composite pipes for hot and cold water transportation and water heating (Recommended water working temperature up to 70°C, water short time high temperature up to 90°C, S3.2 series (inner pipe), SDR 7.4, Nominal pressure up to PN. 2.0 MPa) - aluminum foil with perforation

Product code	Inner pipe outside diameter, mm	Inner pipe wall thickness, mm	Inner pipe Serial	Nominal pressure, MPa	Quantity per package, pieces / m (Each piece 4 m)
PAP (X) BO-Stabi -2 - 20x2.8/ 3.7	20	2.8	S3.2	2.0	40/160
PAP (X) BO-Stabi -2 - 25x3.5/ 4.5	25	3.5	S3.2	2.0	25/100
PAP (X) BO-Stabi -2 - 32x4.5/ 5.5	32	4.5	S3.2	2.0	15/60
PAP (X) BO-Stabi -2 - 40x5.6/ 6.7	40	5.6	S3.2	2.0	12/48
PAP (X) BO-Stabi -2 - 50x6.9/ 8.0	50	6.9	S3.2	2.0	8/32
PAP (X) BO-Stabi -2 - 63x8.7/ 9.9	63	8.7	S3.2	2.0	5/20

The product produced according to the international Standard ISO: EN ISO 15874:2013
 German Standards: DIN 8077:2008; DIN 8078:2008; DIN 16962
 American Standards: ASTM F 2389-2017a; NSF/ANSI 14-2016a; NSF/ANSI 61-2016

BLUE OCEAN pipes from PP-R, PERT and multi-layer composite pipes



Blue Ocean C-fusion outer layer thermo-fusion PP-R/ Copper butt welded anti-bacterial copper-polymer composite pipes for drinking water, cold and hot water transportation, water heating (Recommended water working temperature up to 75°C, water short time high temperature up to 95°C, Nominal pressure up to PN. 3.0 MPa)

Product code	Outside diameter, mm	Wall thickness, mm	Pipes serial	Nominal pressure, MPa	Quantity per package, pieces / m (Each piece 4 m)
PPR-Copper (X)/BW-20x3.0/3.0	20	3.0	PP-R/Copper	3.0	40/160
PPR-Copper (X)/BW-25x3.5/3.0	25	3.5	PP-R/Copper	3.0	25/100
PPR-Copper (X)/BW-32x4.0/3.0	32	4.0	PP-R/Copper	3.0	15/60
PPR-Copper (X)/BW-40x5.0/3.0	40	5.0	PP-R/Copper	3.0	12/48
PPR-Copper (X)/BW-50x5.5/3.0	50	5.5	PP-R/Copper	3.0	8/32
PPR-Copper (X)/BW-63x7.0/3.0	63	7.0	PP-R/Copper	3.0	5/20
PPR-Copper (X)/BW-75x8.5/3.0	75	8.5	PP-R/Copper	3.0	3/12
PPR-Copper (X)/BW-90x10.0/3.0	90	10.0	PP-R/Copper	3.0	2/8
PPR-Copper (X)/BW-110x12.0/3.0	110	12.0	PP-R/Copper	3.0	2/8



PERT single layer pipe in coils for under floor heating systems (Recommended water temperature up to 70°C , Nominal pressure up to PN. 1.0 MPa)

Product code	Outside diameter, mm	Wall thickness, mm	Pipes serial	Nominal pressure, MPa	Quantity per package, coil / m
PERT/FHS /16x2.0 - c (in coils)	16	2.0	PERT/FHS	1.0	200
PERT/FHS /20x2.0 - c (in coils)	20	2.0	PERT/FHS	1.0	100
PERT/FHS /25x2.5 - c (in coils)	25	2.5	PERT/FHS	1.0	50



Blue Ocean A-Oxy PERT/EVOH/PERT oxygen barrier five layer composite pipe in coils for wall and under floor heating, individual and central air-conditioning and solar system (Recommended water working temperature up to 70°C, Nominal pressure up to PN.1.0 MPa)

Product code	Outside diameter, mm	Wall thickness, mm	Pipes serial	Nominal pressure, MPa	Quantity per package, coil / m
PERT /EVOH/PERT-OB/16x2.0 - c (in coils)	16	2.0	PERT/EVOH	1.0	200
PERT /EVOH/PERT-OB/20x2.0 - c (in coils)	20	2.0	PERT/EVOH	1.0	100
PERT /EVOH/PERT-OB/25x2.5 - c (in coils)	25	2.5	PERT/EVOH	1.0	50



UNLIMITED INNOVATIONS

The product produced according to the international Standard ISO: EN ISO 15874:2013
 German Standards: DIN 8077:2008; DIN 8078:2008; DIN 16962
 American Standards: ASTM F 2389-2017a; NSF/ANSI 14-2016a; NSF/ANSI 61-2016



BLUE OCEAN PP-R SOCKET FUSION FITTINGS

BLUE OCEAN PP-R socket fusion fittings without brass alloy inserts

Equal tee



Product code	Inside diameter, D, mm	Quantity per carton, pcs	Product code	Inside diameter, D, mm	Quantity per carton, pcs
PPRF/ET(X)-16	16	400	PPRF/ET(X)-75	75	12
PPRF/ET(X)-20	20	300	PPRF/ET(X)-90	90	6
PPRF/ET(X)-25	25	150	PPRF/ET(X)-110	110	2
PPRF/ET(X)-32	32	120	PPRF/ET(X)-125	125	2
PPRF/ET(X)-40	40	60	PPRF/ET(X)-140	140	2
PPRF/ET(X)-50	50	30	PPRF/ET(X)-160	160	1
PPRF/ET(X)-63	63	15			

Reducing tee



Product code	Inside diameter		Quantity per carton, pcs	Product code	Inside diameter		Quantity per carton, pcs
	D, mm	d, mm			D, mm	d, mm	
PPRF/RT(X)-16x20x16	16	20	300	PPRF/RT(X)-75x32x75	75	32	15
PPRF/RT(X)-16x25x16	16	25	200	PPRF/RT(X)-75x40x75	75	40	15
PPRF/RT(X)-20x16x20	20	16	300	PPRF/RT(X)-75x50x75	75	50	15
PPRF/RT(X)-25x16x25	25	16	200	PPRF/RT(X)-75x63x75	75	63	12
PPRF/RT(X)-25x20x25	25	20	150	PPRF/RT(X)-90x32x90	90	32	12
PPRF/RT(X)-32x16x32	32	16	120	PPRF/RT(X)-90x40x90	90	40	10
PPRF/RT(X)-32x20x32	32	20	120	PPRF/RT(X)-90x50x90	90	50	10
PPRF/RT(X)-32x25x32	32	25	120	PPRF/RT(X)-90x63x90	90	63	6
PPRF/RT(X)-40x20x40	40	20	90	PPRF/RT(X)-90x75x90	90	75	6
PPRF/RT(X)-40x25x40	40	25	90	PPRF/RT(X)-110x40x110	110	40	4
PPRF/RT(X)-40x32x40	40	32	75	PPRF/RT(X)-110x50x110	110	50	4
PPRF/RT(X)-50x20x50	50	20	60	PPRF/RT(X)-110x63x110	110	63	4
PPRF/RT(X)-50x25x50	50	25	60	PPRF/RT(X)-110x75x110	110	75	4
PPRF/RT(X)-50x32x50	50	32	45	PPRF/RT(X)-110x90x110	110	90	4
PPRF/RT(X)-50x40x50	50	40	45	PPRF/RT(X)-125x110x125	125	110	2
PPRF/RT(X)-63x20x63	63	20	24	PPRF/RT(X)-140x110x140	140	110	2
PPRF/RT(X)-63x25x63	63	25	24	PPRF/RT(X)-160x90x160	160	90	2
PPRF/RT(X)-63x32x63	63	32	24	PPRF/RT(X)-160x110x160	160	110	1
PPRF/RT(X)-63x40x63	63	40	24	PPRF/RT(X)-160x125x160	160	125	1
PPRF/RT(X)-63x50x63	63	50	24	PPRF/RT(X)-160x140x160	160	140	1
PPRF/RT(X)-75x25x75	75	25	24				

The product produced according to the international Standard ISO: EN ISO 15874:2013
 German Standards: DIN 8077:2008; DIN 8078:2008; DIN 16962
 American Standards: ASTM F 2389-2017a; NSF/ANSI 14-2016a; NSF/ANSI 61-2016

BLUE OCEAN PP-R SOCKET FUSION FITTINGS



Side reducing tee

Product code	Inside diameter		Quantity per carton, pcs	Product code	Inside diameter		Quantity per carton, pcs
	D, mm	d, mm			D, mm	d, mm	
PPRF/SRT(X)-25x20x20	25	20	150	PPRF/SRT(X)-32x25x25	32	25	120
PPRF/SRT(X)-32x20x20	32	20	120				



Elbow tee

Product code	Inside diameter, D, mm	Quantity per carton, pcs	Product code	Inside diameter, D, mm	Quantity per carton, pcs
PPRF/90EET(X)-20	25	200	PPRF/90EET(X)-32	32	120
PPRF/90EET(X)-25	32	150	PPRF/90EET(X)-40	40	60



Reducing elbow tee

Product code	Inside diameter		Quantity per carton, pcs	Product code	Inside diameter		Quantity per carton, pcs
	D, mm	d, mm			D, mm	d, mm	
PPRF/90RET(X)-20x25x20	20	25	200				



Cross

Product code	Inside diameter, D, mm	Quantity per carton, pcs	Product code	Inside diameter, D, mm	Quantity per carton, pcs
PPRF/CP(X)-20	25	200	PPRF/CP(X)-32	32	80
PPRF/CP(X)-25	32	150	PPRF/CP(X)-40	40	40



UNLIMITED INNOVATIONS

The product produced according to the international Standard ISO: EN ISO 15874:2013
 German Standards: DIN 8077:2008; DIN 8078:2008; DIN 16962
 American Standards: ASTM F 2389-2017a; NSF/ANSI 14-2016a; NSF/ANSI 61-2016



BLUE OCEAN PP-R SOCKET FUSION FITTINGS



Reducing cross

Product code	Inside diameter		Quantity per carton, pcs	Product code	Inside diameter		Quantity per carton, pcs
	D, mm	d, mm			D, mm	d, mm	
PPRF/RCP(X)-25 x 20	25	20	150	PPRF/RCP(X)-32 x 25	32	25	80



90° Elbow

Product code	Inside diameter, D, mm	Quantity per carton, pcs	Product code	Inside diameter, D, mm	Quantity per carton, pcs
PPRF/90E(X)-16	16	600	PPRF/90E(X)-75	75	12
PPRF/90E(X)-20	20	400	PPRF/90E(X)-90	90	6
PPRF/90E(X)-25	25	250	PPRF/90E(X)-110	110	4
PPRF/90E(X)-32	32	120	PPRF/90E(X)-125	125	2
PPRF/90E(X)-40	40	80	PPRF/90E(X)-140	140	2
PPRF/90E(X)-50	50	45	PPRF/90E(X)-160	160	1
PPRF/90E(X)-63	63	18			



90° Elbow internal/external

Product code	Inside diameter		Quantity per carton, pcs	Product code	Inside diameter		Quantity per carton, pcs
	D, mm	d, mm			D, mm	d, mm	
PPRF/90EIE(X)-20	20	20	400	PPRF/90EIE(X)-32	32	32	150
PPRF/90EIE(X)-25	25	25	300				



90° reducing elbow

Product code	Inside diameter		Quantity per carton, pcs	Product code	Inside diameter		Quantity per carton, pcs
	D, mm	d, mm			D, mm	d, mm	
PPRF/90RE(X)-25x20	25	20	300	PPRF/90RE(X)-32x25	32	25	150
PPRF/90RE(X)-32x20	32	20	200				

The product produced according to the international Standard ISO: EN ISO 15874:2013
 German Standards: DIN 8077:2008; DIN 8078:2008; DIN 16962
 American Standards: ASTM F 2389-2017a; NSF/ANSI 14-2016a; NSF/ANSI 61-2016

BLUE OCEAN PP-R SOCKET FUSION FITTINGS



90° long elbow

Product code	Inside diameter, D, mm	Quantity per carton, pcs	Product code	Inside diameter, D, mm	Quantity per carton, pcs
PPRF/90LE(X)-16	16	400	PPRF/90LE(X)-32	32	60
PPRF/90LE(X)-20	20	200	PPRF/90LE(X)-40	40	30
PPRF/90LE(X)-25	25	90			



90° Elbow with PP-R FT end

Product code	Inside diameter		Quantity per carton, pcs	Product code	Inside diameter		Quantity per carton, pcs
	D, mm	R, inch			D, mm	R, inch	
PPRF/90E/PPR-FT(X) - 20x½"	20	½"	350	PPRF/90E/PPR-FT(X) - 25x¾"	25	¾"	200



90° Elbow with PP-R MT end

Product code	Inside diameter		Quantity per carton, pcs	Product code	Inside diameter		Quantity per carton, pcs
	D, mm	R, inch			D, mm	R, inch	
PPRF/90E/PPR-MT(X) - 20x½"	20	½"	400	PPRF/90E/PPR-MT(X) - 25x¾"	25	¾"	200



45° Elbow

Product code	Inside diameter, D, mm	Quantity per carton, pcs	Product code	Inside diameter, D, mm	Quantity per carton, pcs
PPRF/45E(X)-16	16	800	PPRF/45E(X)-75	75	15
PPRF/45E(X)-20	20	500	PPRF/45E(X)-90	90	10
PPRF/45E(X)-25	25	300	PPRF/45E(X)-110	110	4
PPRF/45E(X)-32	32	150	PPRF/45E(X)-125	125	4
PPRF/45E(X)-40	40	100	PPRF/45E(X)-140	140	3
PPRF/45E(X)-50	50	45	PPRF/45E(X)-160	160	2
PPRF/45E(X)-63	63	24			



UNLIMITED INNOVATIONS

The product produced according to the international Standard ISO: EN ISO 15874:2013
 German Standards: DIN 8077:2008; DIN 8078:2008; DIN 16962
 American Standards: ASTM F 2389-2017a; NSF/ANSI 14-2016a; NSF/ANSI 61-2016



BLUE OCEAN PP-R SOCKET FUSION FITTINGS



45° Elbow internal/external

Product code	Inside diameter		Quantity per carton, pcs	Product code	Inside diameter		Quantity per carton, pcs
	D, mm	d, mm			D, mm	d, mm	
PPRF/45EIE(X)-20	20	20	600	PPRF/45EIE(X)-32	32	32	200
PPRF/45EIE(X)-25	25	25	400				



Coupling

Product code	Inside diameter, D, mm	Quantity per carton, pcs	Product code	Inside diameter, D, mm	Quantity per carton, pcs
PPRF/C(X)-16	16	1000	PPRF/C(X)-75	75	32
PPRF/C(X)-20	20	600	PPRF/C(X)-90	90	15
PPRF/C(X)-25	25	400	PPRF/C(X)-110	110	8
PPRF/C(X)-32	32	270	PPRF/C(X)-125	125	6
PPRF/C(X)-40	40	150	PPRF/C(X)-140	140	6
PPRF/C(X)-50	50	80	PPRF/C(X)-160	160	4
PPRF/C(X)-63	63	36			



Reducing coupling

Product code	Inside diameter		Quantity per carton, pcs	Product code	Inside diameter		Quantity per carton, pcs
	D, mm	d, mm			D, mm	d, mm	
PPRF/RC(X)-20x16	20	16	800	PPRF/RC(X)-75x32	75	32	40
PPRF/RC(X)-25x16	25	16	600	PPRF/RC(X)-75x40	75	40	40
PPRF/RC(X)-25x20	25	20	400	PPRF/RC(X)-75x50	75	50	40
PPRF/RC(X)-32x16	32	16	300	PPRF/RC(X)-75x63	75	63	24
PPRF/RC(X)-32x20	32	20	300	PPRF/RC(X)-90x40	90	40	18
PPRF/RC(X)-32x25	32	25	250	PPRF/RC(X)-90x50	90	50	18
PPRF/RC(X)-40x20	40	20	180	PPRF/RC(X)-90x63	90	63	18
PPRF/RC(X)-40x25	40	25	180	PPRF/RC(X)-90x75	90	75	12
PPRF/RC(X)-40x32	40	32	140	PPRF/RC(X)-110x50	110	50	8
PPRF/RC(X)-50x20	50	20	100	PPRF/RC(X)-110x63	110	63	8
PPRF/RC(X)-50x25	50	25	100	PPRF/RC(X)-110x75	110	75	8
PPRF/RC(X)-50x32	50	32	100	PPRF/RC(X)-110x90	110	90	8
PPRF/RC(X)-50x40	50	40	60	PPRF/RC(X)-125x110	125	110	4
PPRF/RC(X)-63x20	63	20	48	PPRF/RC(X)-140x110	140	110	4
PPRF/RC(X)-63x25	63	25	48	PPRF/RC(X)-160x90	160	90	4
PPRF/RC(X)-63x32	63	32	60	PPRF/RC(X)-160x110	160	110	4
PPRF/RC(X)-63x40	63	40	48	PPRF/RC(X)-160x125	160	125	4
PPRF/RC(X)-63x50	63	50	36	PPRF/RC(X)-160x140	160	140	3
PPRF/RC(X)-75x25	75	25	40				

The product produced according to the international Standard ISO: EN ISO 15874:2013
 German Standards: DIN 8077:2008; DIN 8078:2008; DIN 16962
 American Standards: ASTM F 2389-2017a; NSF/ANSI 14-2016a; NSF/ANSI 61-2016

BLUE OCEAN PP-R SOCKET FUSION FITTINGS



PP-R Adaptor with PP-R FT end

Product code	Inside diameter		Quantity per carton, pcs	Product code	Inside diameter		Quantity per carton, pcs
	D, mm	R, inch			D, mm	R, inch	
PPRF/PPR-A/FT(X) - 20x½"	20	½"	600	PPRF/PPR-A/FT(X) - 25x¾"	25	¾"	400



PP-R Adaptor with PP-R MT end

Product code	Inside diameter		Quantity per carton, pcs	Product code	Inside diameter		Quantity per carton, pcs
	D, mm	R, inch			D, mm	R, inch	
PPRF/PPR-A/MT(X) - 20x½"	20	½"	600	PPRF/PPR-A/MT(X) - 25x¾"	25	¾"	400



PP-R Manifold

Product code	Inside diameter		Quantity per carton, pcs	Product code	Inside diameter		Quantity per carton, pcs
	D, mm	d, mm			D, mm	d, mm	
PPRF/FCETA(X)-32x20x4	32	20 x 4	40	PPRF/FCETA(X)-40x25x4	40	25 x 4	30
PPRF/FCETA(X)-32x25x4	32	25 x 4	40	PPRF/FCETA(X)-50x25x4	50	25 x 4	15
PPRF/FCETA(X)-40x20x4	40	20 x 4	30	PPRF/FCETA(X)-50x25x6	50	25 x 6	12



Single/Double PP-R joint manifold block No 01 (interaxial distance 57 mm)

Product code	Inside diameter		Quantity per carton, pcs	Product code	Inside diameter		Quantity per carton, pcs
	D, mm	d, mm			D, mm	d, mm	
PPRF/FCEUM-01(X)-32x20x1	32	20 x 1	80	PPRF/FCEUM-01(X)-40x20x1	40	20 x 1	75
PPRF/FCEUM-01(X)-32x20x2	32	20 x 2	70	PPRF/FCEUM-01(X)-40x20x2	40	20 x 2	40



Single/Double PP-R joint manifold block No 02 (interaxial distance 100 mm)

Product code	Inside diameter		Quantity per carton, pcs	Product code	Inside diameter		Quantity per carton, pcs
	D, mm	d, mm			D, mm	d, mm	
PPRF/FCEUM-02(X)-32x20x1	32	20 x 1	50	PPRF/FCEUM-02(X)-40x20x1	40	20 x 1	40
PPRF/FCEUM-02(X)-32x20x2	32	20 x 2	30	PPRF/FCEUM-02(X)-40x20x2	40	20 x 2	20



UNLIMITED INNOVATIONS

The product produced according to the international Standard ISO: EN ISO 15874:2013
 German Standards: DIN 8077:2008; DIN 8078:2008; DIN 16962
 American Standards: ASTM F 2389-2017a; NSF/ANSI 14-2016a; NSF/ANSI 61-2016



BLUE OCEAN PP-R SOCKET FUSION FITTINGS



Distribution block (for under floor heating and water heating use)

Product code	Inside diameter		Quantity per carton, pcs	Product code	Inside diameter		Quantity per carton, pcs
	D, mm	d, mm			D, mm	d, mm	
PPRF/DBFH(W)-20x16	20	16	80				



Water distribution block (for plumbing use)

Product code	Inside diameter		Quantity per carton, pcs	Product code	Inside diameter		Quantity per carton, pcs
	D, mm	d, mm			D, mm	d, mm	
PPRF/WDB(W)-25x20	25	20	20				



Cross-over pipe

Product code	Inside diameter, D, mm	Quantity per carton, pcs	Product code	Inside diameter, D, mm	Quantity per carton, pcs
PPRF/COP(X)-20	20	120	PPRF/COP(X)-40	40	30
PPRF/COP(X)-25	25	70			



Compensation pipe

Product code	Inside diameter, D, mm	Quantity per carton, pcs	Product code	Inside diameter, D, mm	Quantity per carton, pcs
PPRF/COMP(X)-20	20	20			



Bridging piece

Product code	Inside diameter, D, mm	Quantity per carton, pcs	Product code	Inside diameter, D, mm	Quantity per carton, pcs
PPRF/BP(X)-20	20	240	PPRF/BP(X)-50	50	20
PPRF/BP(X)-25	25	140	PPRF/BP(X)-63	63	8
PPRF/BP(X)-32	32	60			

The product produced according to the international Standard ISO: EN ISO 15874:2013
 German Standards: DIN 8077:2008; DIN 8078:2008; DIN 16962
 American Standards: ASTM F 2389-2017a; NSF/ANSI 14-2016a; NSF/ANSI 61-2016

BLUE OCEAN PP-R SOCKET FUSION FITTINGS



Screw cap, male

Product code	Inside diameter, R, inch	Quantity per carton, pcs	Product code	Inside diameter, R, inch	Quantity per carton, pcs
PPRF/SCAPM(X)- 1/2"	1/2"	1200	PPRF/SCAPM(X)- 3/4"	3/4"	600



Screw cap, female

Product code	Inside diameter, R, inch	Quantity per carton, pcs	Product code	Inside diameter, R, inch	Quantity per carton, pcs
PPRF/SCAPF(X)- 1/2"	1/2"	600	PPRF/SCAPF(X)- 3/4"	3/4"	300



PP-R flange adaptor

Product code	Inside diameter, D, mm	Quantity per carton, pcs	Product code	Inside diameter, D, mm	Quantity per carton, pcs
PPRF/FLA(X)-32	32	120	PPRF/FLA(X)-90	90	24
PPRF/FLA(X)-40	40	96	PPRF/FLA(X)-110	110	14
PPRF/FLA(X)-50	50	48	PPRF/FLA(X)-125	125	8
PPRF/FLA(X)-63	63	36	PPRF/FLA(X)-140	140	6
PPRF/FLA(X)-75	75	30	PPRF/FLA(X)-160	160	5



Steel flange coated with PP-R @ Glass Fiber compound layer

Product code	Inside diameter, D, mm	Quantity per carton, pcs	Product code	Inside diameter, D, mm	Quantity per carton, pcs
PPRF/FL-32 (4 holes)	32	60	PPRF/FL-90 (8 holes)	90	12
PPRF/FL-40 (4 holes)	40	35	PPRF/FL-110 (8 holes)	110	15
PPRF/FL-50 (4 holes)	50	25	PPRF/FL-125 (8 holes)	125	10
PPRF/FL-63 (4 holes)	63	20	PPRF/FL-140 (8 holes)	140	10
PPRF/FL-75 (4 holes)	75	15	PPRF/FL-160 (8 holes)	160	10



EPDM hermetic seal for PP-R flange adaptor

Product code	Flange adaptor Inside diameter, D, mm	Quantity per carton, pcs	Product code	Flange adaptor Inside diameter, D, mm	Quantity per carton, pcs
PPRF/FLAS-32	32	180	PPRF/FLAS-90	90	80
PPRF/FLAS-40	40	120	PPRF/FLAS-110	110	80
PPRF/FLAS-50	50	100	PPRF/FLAS-125	125	60
PPRF/FLAS-63	63	100	PPRF/FLAS-140	140	60
PPRF/FLAS-75	75	90	PPRF/FLAS-160	160	60



UNLIMITED INNOVATIONS

The product produced according to the international Standard ISO: EN ISO 15874:2013
 German Standards: DIN 8077:2008; DIN 8078:2008; DIN 16962
 American Standards: ASTM F 2389-2017a; NSF/ANSI 14-2016a; NSF/ANSI 61-2016



BLUE OCEAN PP-R SOCKET FUSION FITTINGS



Flange complete set (Steel flange coated with PP-R & Glass Fiber compound layer + PP-R flange adaptor + EPDM hermetic seal)

Product code	Inside diameter, D, mm	Quantity per carton, pcs	Product code	Inside diameter, D, mm	Quantity per carton, pcs
PPRF/FL/CS(X)-32 (4 holes)	32	40	PPRF/FL/CS(X)-90 (8 holes)	90	9
PPRF/FL/CS(X)-40 (4 holes)	40	28	PPRF/FL/CS(X)-110 (8 holes)	110	8
PPRF/FL/CS(X)-50 (4 holes)	50	24	PPRF/FL/CS(X)-125 (8 holes)	125	4
PPRF/FL/CS(X)-63 (4 holes)	63	14	PPRF/FL/CS(X)-140 (8 holes)	140	4
PPRF/FL/CS(X)-75 (4 holes)	75	12	PPRF/FL/CS(X)-160 (8 holes)	160	3



Cap

Product code	Inside diameter, D, mm	Quantity per carton, pcs	Product code	Inside diameter, D, mm	Quantity per carton, pcs
PPRF/CAP(X)-16	16	1350	PPRF/CAP(X)-75	75	48
PPRF/CAP(X)-20	20	900	PPRF/CAP(X)-90	90	24
PPRF/CAP(X)-25	25	600	PPRF/CAP(X)-110	110	12
PPRF/CAP(X)-32	32	400	PPRF/CAP(X)-125	125	15
PPRF/CAP(X)-40	40	252	PPRF/CAP(X)-140	140	10
PPRF/CAP(X)-50	50	140	PPRF/CAP(X)-160	160	10
PPRF/CAP(X)-63	63	60			



Short plumbing adaptor

Product code	Inside diameter, D, mm	Quantity per carton, pcs	Product code	Inside diameter, D, mm	Quantity per carton, pcs
PPRF/SPA(X)-20	20	1400	PPRF/SPA(X)-32	32	400
PPRF/SPA(X)-25	25	750			



Long plumbing adaptor

Product code	Inside diameter, D, mm	Quantity per carton, pcs	Product code	Inside diameter, D, mm	Quantity per carton, pcs
PPRF/LPA(X)-20	20	1000	PPRF/LPA(X)-32	32	300
PPRF/LPA(X)-25	25	600			

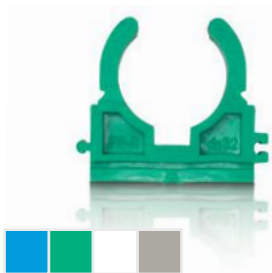


Pipe clip with screw adaptor

Product code	Inside diameter, D, mm	Quantity per carton, pcs	Product code	Inside diameter, D, mm	Quantity per carton, pcs
PPRF/PSC(X)-20	20	400	PPRF/PSC(X)-40	40	150
PPRF/PSC(X)-25	25	300	PPRF/PSC(X)-50	50	80
PPRF/PSC(X)-32	32	180	PPRF/PSC(X)-63	63	60

The product produced according to the international Standard ISO: EN ISO 15874:2013
 German Standards: DIN 8077:2008; DIN 8078:2008; DIN 16962
 American Standards: ASTM F 2389-2017a; NSF/ANSI 14-2016a; NSF/ANSI 61-2016

BLUE OCEAN PP-R SOCKET FUSION FITTINGS



U - type pipe clip

Product code	Inside diameter, D, mm		Quantity per carton, pcs	Product code	Inside diameter, D, mm		Quantity per carton, pcs
	D, mm	d, mm			D, mm	d, mm	
PPRF/PCU(X)-16	16		1200	PPRF/PCU(X)-50	50		240
PPRF/PCU(X)-20	20		800	PPRF/PCU(X)-63	63		150
PPRF/PCU(X)-25	25		600	PPRF/PCU(X)-75	75		120
PPRF/PCU(X)-32	32		500	PPRF/PCU(X)-90	90		80
PPRF/PCU(X)-40	40		300	PPRF/PCU(X)-110	110		50



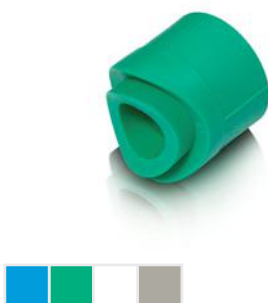
U - type pipe double clip

Product code	Inside diameter, D, mm		Quantity per carton, pcs	Product code	Inside diameter, D, mm		Quantity per carton, pcs
	D, mm	d, mm			D, mm	d, mm	
PPRF/DPCU(X)-16	16		500	PPRF/DPCU(X)-25	25		250
PPRF/DPCU(X)-20	20		300				



Pipe clip with a fixed clamp

Product code	Inside diameter, D, mm		Quantity per carton, pcs	Product code	Inside diameter, D, mm		Quantity per carton, pcs
	D, mm	d, mm			D, mm	d, mm	
PPRF/PC-FC(X)-16	16		800	PPRF/PC-FC(X)-26	26		400
PPRF/PC-FC(X)-20	20		600	PPRF/PC-FC(X)-32	32		350
PPRF/PC-FC(X)-25	25		400				



Weld-in saddle

Product code	Inside diameter		Quantity per carton, pcs	Product code	Inside diameter		Quantity per carton, pcs
	D, mm	d, mm			D, mm	d, mm	
PPRF/WS(X)-40x20	40	20	500	PPRF/WS(X)-90x32	90	32	200
PPRF/WS(X)-40x25	40	25	400	PPRF/WS(X)-90x40	90	40	120
PPRF/WS(X)-50x20	50	20	500	PPRF/WS(X)-110x20	110	20	400
PPRF/WS(X)-50x25	50	25	400	PPRF/WS(X)-110x25	110	25	350
PPRF/WS(X)-63x20	63	20	500	PPRF/WS(X)-110x32	110	32	200
PPRF/WS(X)-63x25	63	25	400	PPRF/WS(X)-110x40	110	40	120
PPRF/WS(X)-63x32	63	32	270	PPRF/WS(X)-110x50	110	50	80
PPRF/WS(X)-75x20	75	20	500	PPRF/WS(X)-125x20	125	20	400
PPRF/WS(X)-75x25	75	25	400	PPRF/WS(X)-125x25	125	25	350
PPRF/WS(X)-75x32	75	32	250	PPRF/WS(X)-125x32	125	32	200
PPRF/WS(X)-75x40	75	40	120	PPRF/WS(X)-125x40	125	40	120
PPRF/WS(X)-90x20	90	20	400	PPRF/WS(X)-125x50	125	50	80
PPRF/WS(X)-90x25	90	25	400	PPRF/WS(X)-125x63	125	63	36



PP-R repairing stick

Product code	Inside diameter		Quantity per carton, pcs	Product code	Inside diameter		Quantity per carton, pcs
	D, mm	d, mm			D, mm	d, mm	
PPRF/RS(X)-7x11	7	11	2400 (12x200)				



UNLIMITED INNOVATIONS

The product produced according to the international Standard ISO: EN ISO 15874:2013
 German Standards: DIN 8077:2008; DIN 8078:2008; DIN 16962
 American Standards: ASTM F 2389-2017a; NSF/ANSI 14-2016a; NSF/ANSI 61-2016



BLUE OCEAN PP-R SOCKET FUSION FITTINGS

BLUE OCEAN PP-R socket fusion fittings with brass alloy inserts

Tee FT



Product code	Inside diameter		Quantity per carton, pcs	Product code	Inside diameter		Quantity per carton, pcs
	D, mm	R, inch			D, mm	R, inch	
PPRF/ITT(X)-16x½"	16	½"	140	PPRF/ITT(X)-25x¾"	25	¾"	100
PPRF/ITT(X)-20x½"	20	½"	140	PPRF/ITT(X)-32x½"	32	½"	60
PPRF/ITT(X)-20x¾"	20	¾"	100	PPRF/ITT(X)-32x¾"	32	¾"	60
PPRF/ITT(X)-25x½"	25	½"	100				

Notice: Euro standard CW617 natural yellow colour brass alloy inserts (optionally available CW614 with nickel plated surface)

Tee hexagonal FT



Product code	Inside diameter		Quantity per carton, pcs	Product code	Inside diameter		Quantity per carton, pcs
	D, mm	R, inch			D, mm	R, inch	
PPRF/HITT(X)-32x1"	32	1"	35	PPRF/HITT(X)-40x1¼"	40	1¼"	20
PPRF/HITT(X)-40x1"	40	1"	25				

Notice: Euro standard CW617 natural yellow colour brass alloy inserts (optionally available CW614 with nickel plated surface)

Tee MT



Product code	Inside diameter		Quantity per carton, pcs	Product code	Inside diameter		Quantity per carton, pcs
	D, mm	R, inch			D, mm	R, inch	
PPRF/ETT(X)-16x½"	16	½"	120	PPRF/ETT(X)-25x¾"	25	¾"	80
PPRF/ETT(X)-20x½"	20	½"	120	PPRF/ETT(X)-32x½"	32	½"	50
PPRF/ETT(X)-20x¾"	20	¾"	100	PPRF/ETT(X)-32x¾"	32	¾"	50
PPRF/ETT(X)-25x½"	25	½"	100				

Notice: Euro standard CW617 natural yellow colour brass alloy inserts (optionally available CW614 with nickel plated surface)

Tee hexagonal MT



Product code	Inside diameter		Quantity per carton, pcs	Product code	Inside diameter		Quantity per carton, pcs
	D, mm	R, inch			D, mm	R, inch	
PPRF/HETT(X)-32x1"	32	1"	30	PPRF/HETT(X)-40x1¼"	40	1¼"	20
PPRF/HETT(X)-40x1"	40	1"	20				

Notice: Euro standard CW617 natural yellow colour brass alloy inserts (optionally available CW614 with nickel plated surface)

The product produced according to the international Standard ISO: EN ISO 15874:2013
 German Standards: DIN 8077:2008; DIN 8078:2008; DIN 16962
 American Standards: ASTM F 2389-2017a; NSF/ANSI 14-2016a; NSF/ANSI 61-2016

BLUE OCEAN PP-R SOCKET FUSION FITTINGS



Tee FT with wall mount

Product code	Inside diameter		Quantity per carton, pcs	Product code	Inside diameter		Quantity per carton, pcs
	D, mm	R, inch			D, mm	R, inch	
PPRF/ITTC(X)-20x½"	20	½"	80	PPRF/ITTC(X)-25x½"	25	½"	70
PPRF/ITTC(X)-20x¾"	20	¾"	70	PPRF/ITTC(X)-25x¾"	25	¾"	70

Notice: Euro standard CW617 natural yellow colour brass alloy inserts (optionally available CW614 with nickel plated surface)



Tee MT with wall mount

Product code	Inside diameter		Quantity per carton, pcs	Product code	Inside diameter		Quantity per carton, pcs
	D, mm	R, inch			D, mm	R, inch	
PPRF/ETTC(X)-20x½"	20	½"	70	PPRF/ETTC(X)-25x½"	25	½"	60
PPRF/ETTC(X)-20x¾"	20	¾"	60	PPRF/ETTC(X)-25x¾"	25	¾"	60

Notice: Euro standard CW617 natural yellow colour brass alloy inserts (optionally available CW614 with nickel plated surface)



Adaptor FT

Product code	Inside diameter		Quantity per carton, pcs	Product code	Inside diameter		Quantity per carton, pcs
	D, mm	R, inch			D, mm	R, inch	
PPRF/IA(X)-16x½"	16	½"	240	PPRF/IA(X)-25x¾"	25	¾"	160
PPRF/IA(X)-20x½"	20	½"	240	PPRF/IA(X)-32x½"	32	½"	150
PPRF/IA(X)-20x¾"	20	¾"	180	PPRF/IA(X)-32x¾"	32	¾"	150
PPRF/IA(X)-25x½"	25	½"	180	PPRF/IA(X)-32x1"	32	1"	96

Notice: Euro standard CW617 natural yellow colour brass alloy inserts (optionally available CW614 with nickel plated surface)



Adaptor hexagonal FT

Product code	Inside diameter		Quantity per carton, pcs	Product code	Inside diameter		Quantity per carton, pcs
	D, mm	R, inch			D, mm	R, inch	
PPRF/HITA(X)-32x1"	32	1"	70	PPRF/HITA(X)-63x1½"	63	1½"	25
PPRF/HITA(X)-40x1"	40	1"	60	PPRF/HITA(X)-63x2"	63	2"	20
PPRF/HITA(X)-40x1¼"	40	1¼"	35	PPRF/HITA(X)-75x2½"	75	2½"	8
PPRF/HITA(X)-50x1¼"	50	1¼"	35	PPRF/HITA(X)-90x3"	90	3"	6
PPRF/HITA(X)-50x1½"	50	1½"	30	PPRF/HITA(X)-110x4"	110	4"	4

Notice: Euro standard CW617 natural yellow colour brass alloy inserts (optionally available CW614 with nickel plated surface)



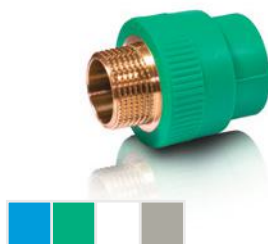
UNLIMITED INNOVATIONS

The product produced according to the international Standard ISO: EN ISO 15874:2013
 German Standards: DIN 8077:2008; DIN 8078:2008; DIN 16962
 American Standards: ASTM F 2389-2017a; NSF/ANSI 14-2016a; NSF/ANSI 61-2016



BLUE OCEAN PP-R SOCKET FUSION FITTINGS

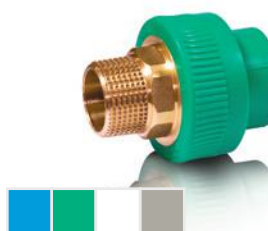
Adaptor MT



Product code	Inside diameter		Quantity per carton, pcs	Product code	Inside diameter		Quantity per carton, pcs
	D, mm	R, inch			D, mm	R, inch	
PPRF/EA(X)-16x½"	16	½"	210	PPRF/EA(X)-25x¾"	25	¾"	120
PPRF/EA(X)-20x½"	20	½"	200	PPRF/EA(X)-32x½"	32	½"	120
PPRF/EA(X)-20x¾"	20	¾"	135	PPRF/EA(X)-32x¾"	32	¾"	120
PPRF/EA(X)-25x½"	25	½"	140	PPRF/EA(X)-32x1"	32	1"	64

Notice: Euro standard CW617 natural yellow colour brass alloy inserts (optionally available CW614 with nickel plated surface)

Adaptor hexagonal MT



Product code	Inside diameter		Quantity per carton, pcs	Product code	Inside diameter		Quantity per carton, pcs
	D, mm	R, inch			D, mm	R, inch	
PPRF/HETA(X)-20x½"	20	½"	200	PPRF/HETA(X)-50x1½"	50	1½"	30
PPRF/HETA(X)-25x¾"	25	¾"	120	PPRF/HETA(X)-63x1½"	63	1½"	20
PPRF/HETA(X)-32x1"	32	1"	50	PPRF/HETA(X)-63x2"	63	2"	20
PPRF/HETA(X)-40x1"	40	1"	60	PPRF/HETA(X)-75x2½"	75	2½"	8
PPRF/HETA(X)-40x1¼"	40	1¼"	30	PPRF/HETA(X)-90x3"	90	3"	6
PPRF/HETA(X)-50x1¼"	50	1¼"	45	PPRF/HETA(X)-110x4"	110	4"	4

Notice: Euro standard CW617 natural yellow colour brass alloy inserts (optionally available CW614 with nickel plated surface)

90° elbow FT



Product code	Inside diameter		Quantity per carton, pcs	Product code	Inside diameter		Quantity per carton, pcs
	D, mm	R, inch			D, mm	R, inch	
PPRF/IT90E(X)-16x½"	16	½"	180	PPRF/IT90E(X)-25x¾"	25	¾"	120
PPRF/IT90E(X)-20x½"	20	½"	180	PPRF/IT90E(X)-32x½"	32	½"	80
PPRF/IT90E(X)-20x¾"	20	¾"	120	PPRF/IT90E(X)-32x¾"	32	¾"	60
PPRF/IT90E(X)-25x½"	25	½"	140	PPRF/IT90E(X)-32x1"	32	1"	60

Notice: Euro standard CW617 natural yellow colour brass alloy inserts (optionally available CW614 with nickel plated surface)

90° elbow hexagonal FT



Product code	Inside diameter		Quantity per carton, pcs	Product code	Inside diameter		Quantity per carton, pcs
	D, mm	R, inch			D, mm	R, inch	
PPRF/HIT90E(X)-32x1"	32	1"	45	PPRF/HIT90E(X)-40x1¼"	40	1¼"	20
PPRF/HIT90E(X)-40x1"	40	1"	30				

Notice: Euro standard CW617 natural yellow colour brass alloy inserts (optionally available CW614 with nickel plated surface)

The product produced according to the international Standard ISO: EN ISO 15874:2013
 German Standards: DIN 8077:2008; DIN 8078:2008; DIN 16962
 American Standards: ASTM F 2389-2017a; NSF/ANSI 14-2016a; NSF/ANSI 61-2016

BLUE OCEAN PP-R SOCKET FUSION FITTINGS



90° elbow MT

Product code	Inside diameter		Quantity per carton, pcs	Product code	Inside diameter		Quantity per carton, pcs
	D, mm	R, inch			D, mm	R, inch	
PPRF/ET90E(X)-16x½"	16	½"	160	PPRF/ET90E(X)-25x¾"	25	¾"	100
PPRF/ET90E(X)-20x½"	20	½"	160	PPRF/ET90E(X)-32x½"	32	½"	50
PPRF/ET90E(X)-20x¾"	20	¾"	100	PPRF/ET90E(X)-32x¾"	32	¾"	50
PPRF/ET90E(X)-25x½"	25	½"	120	PPRF/ET90E(X)-32x1"	32	1"	40

Notice: Euro standard CW617 natural yellow colour brass alloy inserts (optionally available CW614 with nickel plated surface)



90° elbow hexagonal MT

Product code	Inside diameter		Quantity per carton, pcs	Product code	Inside diameter		Quantity per carton, pcs
	D, mm	R, inch			D, mm	R, inch	
PPRF/HET90E(X)-32x1"	32	1"	40	PPRF/HET90E(X)-40x1¼"	40	1¼"	20
PPRF/HET90E(X)-40x1"	40	1"	25				

Notice: Euro standard CW617 natural yellow colour brass alloy inserts (optionally available CW614 with nickel plated surface)



Back plate 90° elbow FT

Product code	Inside diameter		Quantity per carton, pcs	Product code	Inside diameter		Quantity per carton, pcs
	D, mm	R, inch			D, mm	R, inch	
PPRF/IT90E-1(X)-16x½"	16	½"	120	PPRF/IT90E-1(X)-25x½"	25	½"	100
PPRF/IT90E-1(X)-20x½"	20	½"	120	PPRF/IT90E-1(X)-25x¾"	25	¾"	100
PPRF/IT90E-1(X)-20x¾"	20	¾"	100				

Notice: Euro standard CW617 natural yellow colour brass alloy inserts (optionally available CW614 with nickel plated surface)



Back plate 90° elbow MT

Product code	Inside diameter		Quantity per carton, pcs	Product code	Inside diameter		Quantity per carton, pcs
	D, mm	R, inch			D, mm	R, inch	
PPRF/ET90E-1(X)-16x½"	16	½"	120	PPRF/ET90E-1(X)-25x½"	25	½"	100
PPRF/ET90E-1(X)-20x½"	20	½"	120	PPRF/ET90E-1(X)-25x¾"	25	¾"	80
PPRF/ET90E-1(X)-20x¾"	20	¾"	100				

Notice: Euro standard CW617 natural yellow colour brass alloy inserts (optionally available CW614 with nickel plated surface)



UNLIMITED INNOVATIONS

The product produced according to the international Standard ISO: EN ISO 15874:2013
 German Standards: DIN 8077:2008; DIN 8078:2008; DIN 16962
 American Standards: ASTM F 2389-2017a; NSF/ANSI 14-2016a; NSF/ANSI 61-2016



BLUE OCEAN PP-R SOCKET FUSION FITTINGS



Wing back 90° elbow FT

Product code	Inside diameter		Quantity per carton, pcs	Product code	Inside diameter		Quantity per carton, pcs
	D, mm	R, inch			D, mm	R, inch	
PPRF/IT90E-2(X)-20x½"	20	¾"	120				

Notice: Euro standard CW617 natural yellow colour brass alloy inserts (optionally available CW614 with nickel plated surface)



Wing back 90° elbow MT

Product code	Inside diameter		Quantity per carton, pcs	Product code	Inside diameter		Quantity per carton, pcs
	D, mm	R, inch			D, mm	R, inch	
PPRF/ET90E-2(X)-20x½"	20	¾"	120				

Notice: Euro standard CW617 natural yellow colour brass alloy inserts (optionally available CW614 with nickel plated surface)



90° elbow FT for gypsum wall mount

Product code	Inside diameter		Quantity per carton, pcs	Product code	Inside diameter		Quantity per carton, pcs
	D, mm	R, inch			D, mm	R, inch	
PPRF/IT90EWM(X)-20x½"	20	¾"	70	PPRF/IT90EWM(X)-25x¾"	25	¾"	50

Notice: Euro standard CW617 natural yellow colour brass alloy inserts (optionally available CW614 with nickel plated surface)



Double 90° elbow FT with wall mount

Product code	Inside diameter		Quantity per carton, pcs	Product code	Inside diameter		Quantity per carton, pcs
	D, mm	R, inch			D, mm	R, inch	
PPRF/ITWMD90E(X)-20x½"	20	¾"	40				

Notice: Euro standard CW617 natural yellow colour brass alloy inserts (optionally available CW614 with nickel plated surface)



Adjustable water intake FT

Product code	Inside diameter		Quantity per carton, pcs	Product code	Inside diameter		Quantity per carton, pcs
	D, mm	R, inch			D, mm	R, inch	
PPRF/ITUWMC(X)-20x½"	20	¾"	20	PPRF/ITUWMC(X)-25x½"	25	¾"	15
PPRF/ITUWMC-2(X)-20x½"	20	¾"	16				

Notice: Euro standard CW617 natural yellow colour brass alloy inserts (optionally available CW614 with nickel plated surface)

The product produced according to the international Standard ISO: EN ISO 15874:2013
 German Standards: DIN 8077:2008; DIN 8078:2008; DIN 16962
 American Standards: ASTM F 2389-2017a; NSF/ANSI 14-2016a; NSF/ANSI 61-2016

BLUE OCEAN PP-R SOCKET FUSION FITTINGS



Single/Double PP-R joint manifold block FT No. 01 (interaxial distance 57 mm)

Product code	Inside diameter		Quantity per carton, pcs	Product code	Inside diameter		Quantity per carton, pcs
	D, mm	R, inch			D, mm	R, inch	
PPRF/FCEUMIT-01(X)-32 x 1/2"FTx1	32	1/2"x1	60	PPRF/FCEUMIT-01(X)-40 x 1/2"FTx1	40	1/2"x1	40
PPRF/FCEUMIT-01(X)-32 x 1/2"FTx2	32	1/2"x2	35	PPRF/FCEUMIT-01(X)-40 x 1/2"FTx2	40	1/2"x2	24

Notice: Euro standard CW617 natural yellow colour brass alloy inserts (optionally available CW614 with nickel plated surface)



Single/Double PP-R joint manifold block FT No. 02 (interaxial distance 100 mm)

Product code	Inside diameter		Quantity per carton, pcs	Product code	Inside diameter		Quantity per carton, pcs
	D, mm	R, inch			D, mm	R, inch	
PPRF/FCEUMIT-02(X)-32 x 1/2"FTx1	32	1/2"x1	40	PPRF/FCEUMIT-02(X)-40 x 1/2"FTx1	40	1/2"x1	30
PPRF/FCEUMIT-02(X)-32 x 1/2"FTx2	32	1/2"x2	25	PPRF/FCEUMIT-02(X)-40 x 1/2"FTx2	40	1/2"x2	20

Notice: Euro standard CW617 natural yellow colour brass alloy inserts (optionally available CW614 with nickel plated surface)



Single/Double PP-R joint manifold block MT No. 01 (interaxial distance 57 mm)

Product code	Inside diameter		Quantity per carton, pcs	Product code	Inside diameter		Quantity per carton, pcs
	D, mm	R, inch			D, mm	R, inch	
PPRF/FCEUMET-01(X)-32 x 1/2"MTx1	32	1/2"x1	60	PPRF/FCEUMET-01(X)-40 x 1/2"MTx1	40	1/2"x1	40
PPRF/FCEUMET-01(X)-32 x 1/2"MTx2	32	1/2"x2	30	PPRF/FCEUMET-01(X)-40 x 1/2"MTx2	40	1/2"x2	24

Notice: Euro standard CW617 natural yellow colour brass alloy inserts (optionally available CW614 with nickel plated surface)



Single/Double PP-R joint manifold block MT No. 02 (interaxial distance 100 mm)

Product code	Inside diameter		Quantity per carton, pcs	Product code	Inside diameter		Quantity per carton, pcs
	D, mm	R, inch			D, mm	R, inch	
PPRF/FCEUMET-02(X)-32 x 1/2"MTx1	32	1/2"x1	40	PPRF/FCEUMET-02(X)-40 x 1/2"MTx1	40	1/2"x1	30
PPRF/FCEUMET-02(X)-32 x 1/2"MTx2	32	1/2"x2	25	PPRF/FCEUMET-02(X)-40 x 1/2"MTx2	40	1/2"x2	20

Notice: Euro standard CW617 natural yellow colour brass alloy inserts (optionally available CW614 with nickel plated surface)



UNLIMITED INNOVATIONS

The product produced according to the international Standard ISO: EN ISO 15874:2013
 German Standards: DIN 8077:2008; DIN 8078:2008; DIN 16962
 American Standards: ASTM F 2389-2017a; NSF/ANSI 14-2016a; NSF/ANSI 61-2016



BLUE OCEAN PP-R SOCKET FUSION FITTINGS



Reducer with cap nut FT

Product code	Inside diameter		Quantity per carton, pcs	Product code	Inside diameter		Quantity per carton, pcs
	D, mm	R, inch			D, mm	R, inch	
PPRF/CA-FTNB(X)-16x½"	16	½"	210	PPRF/CA-FTNB(X)-25x¾"	25	¾"	160
PPRF/CA-FTNB(X)-20x½"	20	½"	200	PPRF/CA-FTNB(X)-32x1"	32	1"	110
PPRF/CA-FTNB(X)-20x¾"	20	¾"	180				

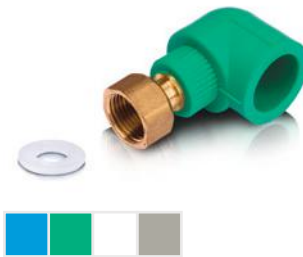
Notice: Euro standard CW617 natural yellow colour brass alloy inserts (optionally available CW614 with nickel plated surface)



Reducer with euro cone FT (for water heating radiators connection)

Product code	Inside diameter		Quantity per carton, pcs	Product code	Inside diameter		Quantity per carton, pcs
	D, mm	R, inch			D, mm	R, inch	
PPRF/REC(X)-20x¾"	20	¾"	180	PPRF/REC(X)-25x¾"	25	¾"	160

Notice: Euro standard CW617 natural yellow colour brass alloy inserts (optionally available CW614 with nickel plated surface)



90° elbow with cap nut FT

Product code	Inside diameter		Quantity per carton, pcs	Product code	Inside diameter		Quantity per carton, pcs
	D, mm	R, inch			D, mm	R, inch	
PPRF/90E-CNF(X)-16x½"	16	½"	300	PPRF/90E-CNF(X)-25x½"	25	½"	200
PPRF/90E-CNF(X)-20x½"	20	½"	240	PPRF/90E-CNF(X)-25x¾"	25	¾"	160
PPRF/90E-CNF(X)-20x¾"	20	¾"	220				

Notice: Euro standard CW617 natural yellow colour brass alloy inserts (optionally available CW614 with nickel plated surface)



Joint coupling with cap nut FT

Product code	Inside diameter		Quantity per carton, pcs	Product code	Inside diameter		Quantity per carton, pcs
	D, mm	R, inch			D, mm	R, inch	
PPRF/PPRCA-FTNBA(X)-16x½"	16	½"	240	PPRF/PPRCA-FTNBA(X)-25x¾"	25	¾"	150
PPRF/PPRCA-FTNBA(X)-20x½"	20	½"	200	PPRF/PPRCA-FTNBA(X)-25x1"	25	1"	120
PPRF/PPRCA-FTNBA(X)-20x¾"	20	¾"	200	PPRF/PPRCA-FTNBA(X)-32x¾"	32	¾"	120
PPRF/PPRCA-FTNBA(X)-25x½"	25	½"	150	PPRF/PPRCA-FTNBA(X)-32x1"	32	1"	100

Notice: Euro standard CW617 natural yellow colour brass alloy inserts (optionally available CW614 with nickel plated surface)

The product produced according to the international Standard ISO: EN ISO 15874:2013
 German Standards: DIN 8077:2008; DIN 8078:2008; DIN 16962
 American Standards: ASTM F 2389-2017a; NSF/ANSI 14-2016a; NSF/ANSI 61-2016

BLUE OCEAN PP-R SOCKET FUSION FITTINGS



Joint 90° elbow with cap nut FT

Product code	Inside diameter		Quantity per carton, pcs	Product code	Inside diameter		Quantity per carton, pcs
	D, mm	R, inch			D, mm	R, inch	
PPRF/90E-CFTNBA(X)-16x½"	16	½"	300	PPRF/90E-CFTNBA(X)-25x1"	25	1"	160
PPRF/90E-CFTNBA(X)-20x¾"	20	¾"	240	PPRF/90E-CFTNBA(X)-32x¾"	32	¾"	150
PPRF/90E-CFTNBA(X)-25x¾"	25	¾"	200	PPRF/90E-CFTNBA(X)-32x1"	32	1"	100

Notice: Euro standard CW617 natural yellow colour brass alloy inserts (optionally available CW614 with nickel plated surface)



Joint tee with cap nut FT

Product code	Inside diameter		Quantity per carton, pcs	Product code	Inside diameter		Quantity per carton, pcs
	D, mm	R, inch			D, mm	R, inch	
PPRF/ET-CFTNBA(X)-16x½"	16	½"	240	PPRF/ET-CFTNBA(X)-25x1"	25	1"	100
PPRF/ET-CFTNBA(X)-20x½"	20	½"	200	PPRF/ET-CFTNBA(X)-32x½"	32	½"	80
PPRF/ET-CFTNBA(X)-20x¾"	20	¾"	200	PPRF/ET-CFTNBA(X)-32x¾"	32	¾"	80
PPRF/ET-CFTNBA(X)-25x½"	25	½"	100	PPRF/ET-CFTNBA(X)-32x1"	32	1"	80
PPRF/ET-CFTNBA(X)-25x¾"	25	¾"	100				

Notice: Euro standard CW617 natural yellow colour brass alloy inserts (optionally available CW614 with nickel plated surface)



Joint adaptor with cap nut FT

Product code	Inside diameter		Quantity per carton, pcs	Product code	Inside diameter		Quantity per carton, pcs
	D, mm	R, inch			D, mm	R, inch	
PPRF/FTN-PPRFH(X)-16x½"	16	½"	400	PPRF/FTN-PPRFH(X)-25x1"	25	1"	200
PPRF/FTN-PPRFH(X)-20x¾"	20	¾"	300				

Notice: Euro standard CW617 natural yellow colour brass alloy inserts (optionally available CW614 with nickel plated surface)



Weld-in saddle hexagonal MT

Product code	Inside diameter		Quantity per carton, pcs	Product code	Inside diameter		Quantity per carton, pcs
	D, mm	R, inch			D, mm	R, inch	
PPRF/WSHMT(X)-40x25x½"	40x25	½"	140	PPRF/WSHMT(X)-90x25x½"	90x25	½"	140
PPRF/WSHMT(X)-40x25x¾"	40x25	¾"	120	PPRF/WSHMT(X)-90x25x¾"	90x25	¾"	100
PPRF/WSHMT(X)-50x25x½"	50x25	½"	140	PPRF/WSHMT(X)-90x32x1"	90x32	1"	60
PPRF/WSHMT(X)-50x25x¾"	50x25	¾"	120	PPRF/WSHMT(X)-110x25x½"	110x25	½"	140
PPRF/WSHMT(X)-63x25x½"	63x25	½"	140	PPRF/WSHMT(X)-110x25x¾"	110x25	¾"	100
PPRF/WSHMT(X)-63x25x¾"	63x25	¾"	120	PPRF/WSHMT(X)-110x32x1"	110x32	1"	60
PPRF/WSHMT(X)-75x25x½"	75x25	½"	140	PPRF/WSHMT(X)-125x25x½"	125x25	½"	140
PPRF/WSHMT(X)-75x25x¾"	75x25	¾"	120	PPRF/WSHMT(X)-125x25x¾"	125x25	¾"	100
PPRF/WSHMT(X)-75x32x1"	75x32	1"	60	PPRF/WSHMT(X)-125x32x1"	125x32	1"	60

Notice: Euro standard CW617 natural yellow colour brass alloy inserts (optionally available CW614 with nickel plated surface)



UNLIMITED INNOVATIONS

The product produced according to the international Standard ISO: EN ISO 15874:2013
 German Standards: DIN 8077:2008; DIN 8078:2008; DIN 16962
 American Standards: ASTM F 2389-2017a; NSF/ANSI 14-2016a; NSF/ANSI 61-2016



BLUE OCEAN PP-R SOCKET FUSION FITTINGS



Weld-in saddle hexagonal FT

Product code	Inside diameter		Quantity per carton, pcs	Product code	Inside diameter		Quantity per carton, pcs
	D, mm	R, inch			D, mm	R, inch	
PPRF/WSHFT(X)-40x25x½"	40x25	½"	160	PPRF/WSHFT(X)-90x25x½"	90x25	½"	160
PPRF/WSHFT(X)-40x25x¾"	40x25	¾"	140	PPRF/WSHFT(X)-90x25x¾"	90x25	¾"	120
PPRF/WSHFT(X)-50x25x½"	50x25	½"	160	PPRF/WSHFT(X)-90x32x1"	90x32	1"	70
PPRF/WSHFT(X)-50x25x¾"	50x25	¾"	140	PPRF/WSHFT(X)-110x25x½"	110x25	½"	160
PPRF/WSHFT(X)-63x25x½"	63x25	½"	160	PPRF/WSHFT(X)-110x25x¾"	110x25	¾"	120
PPRF/WSHFT(X)-63x25x¾"	63x25	¾"	140	PPRF/WSHFT(X)-110x32x1"	110x32	1"	70
PPRF/WSHFT(X)-75x25x½"	75x25	½"	160	PPRF/WSHFT(X)-125x25x½"	125x25	½"	160
PPRF/WSHFT(X)-75x25x¾"	75x25	¾"	140	PPRF/WSHFT(X)-125x25x¾"	125x25	¾"	120
PPRF/WSHFT(X)-75x32x1"	75x32	1"	70	PPRF/WSHFT(X)-125x32x1"	125x32	1"	70

Notice: Euro standard CW617 natural yellow colour brass alloy inserts (optionally available CW614 with nickel plated surface)

BLUE OCEAN PP-R flat seat union adaptor fittings



Hexagonal union adaptor MT

Product code	Inside / Outside diameter		Quantity per carton, pcs	Product code	Inside / Outside diameter		Quantity per carton, pcs
	D, mm	R, inch			D, mm	R, inch	
PPRF/UAM(X)-20x½"	20	½"	180	PPRF/UAM(X)-40x1¼"	40	1¼"	45
PPRF/UAM(X)-25x¾"	25	¾"	120	PPRF/UAM(X)-50x1½"	50	1½"	30
PPRF/UAM(X)-32x1"	32	1"	70	PPRF/UAM(X)-63x2"	63	2"	15

Notice: Euro standard CW617 natural yellow colour brass alloy inserts (optionally available CW614 with nickel plated surface)



Hexagonal union adaptor FT

Product code	Inside diameter		Quantity per carton, pcs	Product code	Inside diameter		Quantity per carton, pcs
	D, mm	R, inch			D, mm	R, inch	
PPRF/UAF(X)-20x½"	20	½"	210	PPRF/UAF(X)-40x1¼"	40	1¼"	45
PPRF/UAF(X)-25x¾"	25	¾"	120	PPRF/UAF(X)-50x1½"	50	1½"	30
PPRF/UAF(X)-32x1"	32	1"	80	PPRF/UAF(X)-63x2"	63	2"	15

Notice: Euro standard CW617 natural yellow colour brass alloy inserts (optionally available CW614 with nickel plated surface)

The product produced according to the international Standard ISO: EN ISO 15874:2013
 German Standards: DIN 8077:2008; DIN 8078:2008; DIN 16962
 American Standards: ASTM F 2389-2017a; NSF/ANSI 14-2016a; NSF/ANSI 61-2016

BLUE OCEAN PP-R SOCKET FUSION FITTINGS



PP-R union adaptor MT

Product code	Inside / Outside diameter		Quantity per carton, pcs	Product code	Inside / Outside diameter		Quantity per carton, pcs
	D, mm	R, inch			D, mm	R, inch	
PPRF/UA-PPRMT(X)-20x½"	20	½"	120				

Notice: Euro standard CW617 natural yellow colour brass alloy inserts (optionally available CW614 with nickel plated surface)



PP-R union adaptor FT

Product code	Inside diameter		Quantity per carton, pcs	Product code	Inside diameter		Quantity per carton, pcs
	D, mm	R, inch			D, mm	R, inch	
PPRF/UA-PPRFT(X)-20x½"	20	½"	160				

Notice: Euro standard CW617 natural yellow colour brass alloy inserts (optionally available CW614 with nickel plated surface)



Demountable union adaptor FT Type - 2

Product code	Inside / Outside diameter		Quantity per carton, pcs	Product code	Inside / Outside diameter		Quantity per carton, pcs
	D, mm	R, inch			D, mm	R, inch	
PPRF/UA-F-2(X)-20x½"	20	½"	300	PPRF/UA-F-2(X)-32x1"	32	1"	120
PPRF/UA-F-2(X)-25x¾"	25	¾"	200				

Notice: Euro standard CW617 natural yellow colour brass alloy inserts (optionally available CW614 with nickel plated surface)



Demountable union adaptor MT Type - 2

Product code	Outside diameter		Quantity per carton, pcs	Product code	Outside diameter		Quantity per carton, pcs
	D, mm	R, inch			D, mm	R, inch	
PPRF/UAM-2(X)-20x½"	20	½"	260	PPRF/UAM-2(X)-32x1"	32	1"	80
PPRF/UAM-2(X)-25x¾"	25	¾"	150				

Notice: Euro standard CW617 natural yellow colour brass alloy inserts (optionally available CW614 with nickel plated surface)



Demountable union adaptor Type - 2

Product code	Outside diameter		Quantity per carton, pcs	Product code	Outside diameter		Quantity per carton, pcs
	D, mm	d, mm			D, mm	d, mm	
PPRF/UA-2(X)-20x20	20	20	260	PPRF/UA-2(X)-32x32	32	32	80
PPRF/UA-2(X)-25x25	25	25	150				

Notice: Euro standard CW617 natural yellow colour brass alloy inserts (optionally available CW614 with nickel plated surface)



UNLIMITED INNOVATIONS

The product produced according to the international Standard ISO: EN ISO 15874:2013
 German Standards: DIN 8077:2008; DIN 8078:2008; DIN 16962
 American Standards: ASTM F 2389-2017a; NSF/ANSI 14-2016a; NSF/ANSI 61-2016



BLUE OCEAN PP-R SOCKET FUSION FITTINGS



PP-R union adaptor for cold and hot (up to 60°C) water use

Product code	Inside diameter		Quantity per carton, pcs	Product code	Inside diameter		Quantity per carton, pcs
	D, mm	d, mm			D, mm	d, mm	
PPRF/UA-PPR(X)-20	20	20	250	PPRF/UA-PPR(X)-40	40	40	48
PPRF/UA-PPR(X)-25	25	25	150	PPRF/UA-PPR(X)-50	50	50	30
PPRF/UA-PPR(X)-32	32	32	80	PPRF/UA-PPR(X)-63	63	63	20

BLUE OCEAN VALVES FOR PP-R PIPING SYSTEM

BLUE OCEAN stop valves and gate valves for PP-R piping systems



Stop valve Type 1

Product code	Inside diameter, D, mm	Quantity per carton, pcs	Product code	Inside diameter, D, mm	Quantity per carton, pcs
PPRF/SV-1(X)-20	20	75	PPRF/SV-1(X)-63	63	6
PPRF/SV-1(X)-25	25	50	PPRF/SV-1(X)-75	75	6
PPRF/SV-1(X)-32	32	45	PPRF/SV-1(X)-90	90	4
PPRF/SV-1(X)-40	40	20	PPRF/SV-1(X)-110	110	2
PPRF/SV-1(X)-50	50	15			

Notice: Euro standard CW617 natural yellow colour brass alloy inserts (Cartridge outer part from CW614 brass alloy with nickel plated surface)



Stop valve short

Product code	Inside diameter, D, mm	Quantity per carton, pcs	Product code	Inside diameter, D, mm	Quantity per carton, pcs
PPRF/SSV(X)-20	20	90	PPRF/SSV(X)-32	32	60
PPRF/SSV(X)-25	25	70			

Notice: Euro standard CW617 natural yellow colour brass alloy inserts and valve cartridge



Stop valve Type 2

Product code	Inside diameter, D, mm	Quantity per carton, pcs	Product code	Inside diameter, D, mm	Quantity per carton, pcs
PPRF/SV-2(X)-20	20	50	PPRF/SV-2(X)-50	50	15
PPRF/SV-2(X)-25	25	40	PPRF/SV-2(X)-63	63	8
PPRF/SV-2(X)-32	32	20	PPRF/SV-2(X)-75	75	6
PPRF/SV-2(X)-40	40	20			

Notice: Euro standard CW617 natural yellow colour brass alloy inserts and valve cartridge

The product produced according to the international Standard ISO: EN ISO 15874:2013
 German Standards: DIN 8077:2008; DIN 8078:2008; DIN 16962
 American Standards: ASTM F 2389-2017a; NSF/ANSI 14-2016a; NSF/ANSI 61-2016

BLUE OCEAN VALVES FOR PP-R PIPING SYSTEM



Concealed stop valve Type 1

Product code	Inside diameter, D, mm	Quantity per carton, pcs	Product code	Inside diameter, D, mm	Quantity per carton, pcs
PPRF/CSV-1(X)-20	20	40	PPRF/CSV-1(X)-32	32	18
PPRF/CSV-1(X)-25	25	30			

Notice: Euro standard CW617 natural yellow colour brass alloy inserts and cartridge with coating part from chrome plated ABS



Concealed stop valve Type 2

Product code	Inside diameter, D, mm	Quantity per carton, pcs	Product code	Inside diameter, D, mm	Quantity per carton, pcs
PPRF/CSV-2(X)-20	20	40	PPRF/CSV-2(X)-32	32	20
PPRF/CSV-2(X)-25	25	30			

Notice: Euro standard CW617 natural yellow colour brass alloy inserts and cartridge with coating part from chrome plated ABS



Inclined stop valve

Product code	Inside diameter, D, mm	Quantity per carton, pcs	Product code	Inside diameter, D, mm	Quantity per carton, pcs
PPRF/IV(X)-20	20	50	PPRF/IV(X)-32	32	24
PPRF/IV(X)-25	25	32			

Notice: Euro standard CW617 natural yellow colour brass alloy inserts and cartridge



Inclined stop valve with return flow preventor

Product code	Inside diameter, D, mm	Quantity per carton, pcs	Product code	Inside diameter, D, mm	Quantity per carton, pcs
PPRF/IV-RFP(X)-20	20	50	PPRF/IV-RFP(X)-32	32	24
PPRF/IV-RFP(X)-25	25	32			

Notice: Euro standard CW617 natural yellow colour brass alloy inserts and cartridge



UNLIMITED INNOVATIONS

The product produced according to the international Standard ISO: EN ISO 15874:2013
 German Standards: DIN 8077:2008; DIN 8078:2008; DIN 16962
 American Standards: ASTM F 2389-2017a; NSF/ANSI 14-2016a; NSF/ANSI 61-2016



BLUE OCEAN VALVES FOR PP-R PIPING SYSTEM



PP-R straight stop valve for water heating

Product code	Inside / Outside diameter		Quantity per carton, pcs	Product code	Inside / Outside diameter		Quantity per carton, pcs
	D, mm	R, inch			D, mm	R, inch	
PPRF/PPR/SSVH(X)-20x½"	20	½"	50	PPRF/PPR/SSVH(X)-25x¾"	25	¾"	40

Notice: Euro standard CW617 natural yellow colour brass alloy inserts (optionally available CW614 with nickel plated surface)



PP-R elbow stop valve for water heating

Product code	Inside / Outside diameter		Quantity per carton, pcs	Product code	Inside / Outside diameter		Quantity per carton, pcs
	D, mm	R, inch			D, mm	R, inch	
PPRF/PPR/ESVH(X)-20x½"	20	½"	50	PPRF/PPR/ESVH(X)-25x¾"	25	¾"	40

Notice: Euro standard CW617 natural yellow colour brass alloy inserts (optionally available CW614 with nickel plated surface)



Concealed valve with ceramic cartridge

Product code	Inside diameter, D, mm	Quantity per carton, pcs	Product code	Inside diameter, D, mm	Quantity per carton, pcs
PPRF/PPR/CVCC(X)-20	20	40	PPRF/PPR/CVCC(X)-32	32	30
PPRF/PPR/CVCC(X)-25	25	40			

Notice: Euro standard CW617 natural yellow colour brass alloy inserts and ceramic cartridge with coating part from chrome plated ABS



Concealed gate valve with PP-R body

Product code	Inside diameter, D, mm	Quantity per carton, pcs	Product code	Inside diameter, D, mm	Quantity per carton, pcs
PPRF/PPR/CGV(X)-20	20	20	PPRF/PPR/CGV(X)-25	25	20

Notice: Euro standard CW617 natural yellow colour brass alloy inserts and gate cartridge with chrome plated coating part



Gate valve with double union adaptors and PPR fusion ends

Product code	Inside diameter, D, mm	Quantity per carton, pcs	Product code	Inside diameter, D, mm	Quantity per carton, pcs
PPRF/BGV-UA-PPR-E(X)-20	20	50	PPRF/BGV-UA-PPR-E(X)-32	32	20
PPRF/BGV-UA-PPR-E(X)-25	25	40			

Notice: Euro standard CW617 natural yellow colour brass alloy body (optionally available CW614 with nickel plated surface)

The product produced according to the international Standard ISO: EN ISO 15874:2013
 German Standards: DIN 8077:2008; DIN 8078:2008; DIN 16962
 American Standards: ASTM F 2389-2017a; NSF/ANSI 14-2016a; NSF/ANSI 61-2016

BLUE OCEAN VALVES FOR PP-R PIPING SYSTEM



PP-R body gate valve

Product code	Inside diameter, D, mm	Quantity per carton, pcs	Product code	Inside diameter, D, mm	Quantity per carton, pcs
PPRF/PPR-GV(X)-20	20	20	PPRF/PPR-GV(X)-32	32	20
PPRF/PPR-GV(X)-25	25	20			

Notice: Euro standard CW617 natural yellow colour brass alloy inserts and gate cartridge with nickel plated outer part

BLUE OCEAN ball valves for PP-R piping systems



Brass alloy ball valve with double union adaptors and PP-R fusion ends

Product code	Inside diameter		Quantity per carton, pcs	Product code	Inside diameter		Quantity per carton, pcs
	D, mm	d, mm			D, mm	d, mm	
PPRF/BV(X)-20x20	20	20	60	PPRF/BV(X)-40x40	40	40	10
PPRF/BV(X)-25x25	25	25	50	PPRF/BV(X)-50x50	50	50	8
PPRF/BV(X)-32x32	32	32	30	PPRF/BV(X)-63x63	63	63	6

Notice: Euro standard CW617 natural yellow colour brass alloy body and inserts (optionally available CW614 with nickel plated surface)



Brass alloy ball valve with union adaptor and PP-R fusion end / FT end

Product code	Inside diameter		Quantity per carton, pcs	Product code	Inside diameter		Quantity per carton, pcs
	D, mm	R, inch			D, mm	R, inch	
PPRF/BVF(X)-20x1/2"	20	1/2"	80	PPRF/BVF(X)-40x1 1/4"	40	1 1/4"	20
PPRF/BVF(X)-25x3/4"	25	3/4"	70	PPRF/BVF(X)-50x1 1/2"	50	1 1/2"	10
PPRF/BVF(X)-32x1"	32	1"	40	PPRF/BVF(X)-63x2"	63	2"	8

Notice: Euro standard CW617 natural yellow colour brass alloy body and inserts (optionally available CW614 with nickel plated surface)



Brass alloy ball valve with union adaptor and PP-R fusion end / MT end

Product code	Inside / Outside diameter		Quantity per carton, pcs	Product code	Inside / Outside diameter		Quantity per carton, pcs
	D, mm	R, inch			D, mm	R, inch	
PPRF/BVM(X)-20x1/2"	20	1/2"	90	PPRF/BVM(X)-40x1 1/4"	40	1 1/4"	15
PPRF/BVM(X)-25x3/4"	25	3/4"	60	PPRF/BVM(X)-50x1 1/2"	50	1 1/2"	8
PPRF/BVM(X)-32x1"	32	1"	40	PPRF/BVM(X)-63x2"	63	2"	6

Notice: Euro standard CW617 natural yellow colour brass alloy body and inserts (optionally available CW614 with nickel plated surface)



UNLIMITED INNOVATIONS

The product produced according to the international Standard ISO: EN ISO 15874:2013
 German Standards: DIN 8077:2008; DIN 8078:2008; DIN 16962
 American Standards: ASTM F 2389-2017a; NSF/ANSI 14-2016a; NSF/ANSI 61-2016



BLUE OCEAN VALVES FOR PP-R PIPING SYSTEM



PP-R ball valve (brass alloy ball) for hot water use - long handle

Product code	Inside diameter, D, mm	Quantity per carton, pcs	Product code	Inside diameter, D, mm	Quantity per carton, pcs
PPRF/BV/PPR/HW-1(X)-20	20	120	PPRF/BV/PPR/HW-1(X)-50	50	20
PPRF/BV/PPR/HW-1(X)-25	25	80	PPRF/BV/PPR/HW-1(X)-63	63	10
PPRF/BV/PPR/HW-1(X)-32	32	50	PPRF/BV/PPR/HW-1(X)-75	75	4
PPRF/BV/PPR/HW-1(X)-40	40	30			



PP-R ball valve (brass alloy ball) for hot water use - butterfly handle

Product code	Inside diameter, D, mm	Quantity per carton, pcs	Product code	Inside diameter, D, mm	Quantity per carton, pcs
PPRF/BV/PPR/HW-1B(X)-20	20	120	PPRF/BV/PPR/HW-1B(X)-32	32	50
PPRF/BV/PPR/HW-1B(X)-25	25	80			



PP-R ball valve (PPSU ball) for hot water use - long handle

Product code	Inside diameter, D, mm	Quantity per carton, pcs	Product code	Inside diameter, D, mm	Quantity per carton, pcs
PPRF/BV/PPR/HW-2(X)-20	20	120	PPRF/BV/PPR/HW-2(X)-50	50	20
PPRF/BV/PPR/HW-2(X)-25	25	80	PPRF/BV/PPR/HW-2(X)-63	63	10
PPRF/BV/PPR/HW-2(X)-32	32	50	PPRF/BV/PPR/HW-2(X)-75	75	4
PPRF/BV/PPR/HW-2(X)-40	40	30			



PP-R ball valve (PPSU ball) for hot water use - butterfly handle

Product code	Inside diameter, D, mm	Quantity per carton, pcs	Product code	Inside diameter, D, mm	Quantity per carton, pcs
PPRF/BV/PPR/HW-2B(X)-20	20	120	PPRF/BV/PPR/HW-2B(X)-32	32	50
PPRF/BV/PPR/HW-2B(X)-25	25	80			



PP-R ball valve (ABS ball) for hot water use - long handle

Product code	Inside diameter, D, mm	Quantity per carton, pcs	Product code	Inside diameter, D, mm	Quantity per carton, pcs
PPRF/BV/PPR/CW(X)-20	20	120	PPRF/BV/PPR/CW(X)-40	40	30
PPRF/BV/PPR/CW(X)-25	25	80	PPRF/BV/PPR/CW(X)-50	50	20
PPRF/BV/PPR/CW(X)-32	32	50	PPRF/BV/PPR/CW(X)-63	63	10

The product produced according to the international Standard ISO: EN ISO 15874:2013
 German Standards: DIN 8077:2008; DIN 8078:2008; DIN 16962
 American Standards: ASTM F 2389-2017a; NSF/ANSI 14-2016a; NSF/ANSI 61-2016

BLUE OCEAN VALVES FOR PP-R PIPING SYSTEM



PP-R ball valve (ABS ball) for hot water use - butterfly handle

Product code	Inside diameter, D, mm		Quantity per carton, pcs	Product code	Inside diameter, D, mm		Quantity per carton, pcs
PPRF/BV/PPR/CW - B(X)-20	20		120	PPRF/BV/PPR/CW - B(X)-32	32		50
PPRF/BV/PPR/CW - B(X)-25	25		80				



PP-R straight ball valve (brass alloy ball) for water heating

Product code	Inside / Outside diameter		Quantity per carton, pcs	Product code	Inside / Outside diameter		Quantity per carton, pcs
	D, mm	R, inch			D, mm	R, inch	
	PPRF/PPR/SBVH-1(X)-20x½"	20			½"	50	
PPRF/PPR/SBVH-1(X)-25x¾"	25	¾"	40				

Notice: Euro standard CW617 natural yellow colour brass alloy inserts (optionally available CW614 with nickel plated surface)



PP-R straight ball valve (PPSU ball) for water heating

Product code	Inside / Outside diameter		Quantity per carton, pcs	Product code	Inside / Outside diameter		Quantity per carton, pcs
	D, mm	R, inch			D, mm	R, inch	
	PPRF/PPR/SBVH-2(X)-20x½"	20			½"	50	
PPRF/PPR/SBVH-2(X)-25x¾"	25	¾"	40				

Notice: Euro standard CW617 natural yellow colour brass alloy inserts (optionally available CW614 with nickel plated surface)



PP-R elbow ball valve (brass alloy ball) for water heating

Product code	Inside / Outside diameter		Quantity per carton, pcs	Product code	Inside / Outside diameter		Quantity per carton, pcs
	D, mm	R, inch			D, mm	R, inch	
	PPRF/PPR/EBVH-1(X)-20x½"	20			½"	50	
PPRF/PPR/EBVH-1(X)-25x¾"	25	¾"	40				

Notice: Euro standard CW617 natural yellow colour brass alloy inserts (optionally available CW614 with nickel plated surface)



PP-R elbow ball valve (PPSU ball) for water heating

Product code	Inside / Outside diameter		Quantity per carton, pcs	Product code	Inside / Outside diameter		Quantity per carton, pcs
	D, mm	R, inch			D, mm	R, inch	
	PPRF/PPR/EBVH-2(X)-20x½"	20			½"	50	
PPRF/PPR/EBVH-2(X)-25x¾"	25	¾"	40				

Notice: Euro standard CW617 natural yellow colour brass alloy inserts (optionally available CW614 with nickel plated surface)



UNLIMITED INNOVATIONS

The product produced according to the international Standard ISO: EN ISO 15874:2013
 German Standards: DIN 8077:2008; DIN 8078:2008; DIN 16962
 American Standards: ASTM F 2389-2017a; NSF/ANSI 14-2016a; NSF/ANSI 61-2016



BLUE OCEAN VALVES FOR PP-R PIPING SYSTEM



PP-R ball valve (brass alloy ball) with double union adaptors and PP-R fusion ends for cold and hot water use - long handle

Product code	Inside diameter, D, mm	Quantity per carton, pcs	Product code	Inside diameter, D, mm	Quantity per carton, pcs
PPRF/BVUA-HW-1/PPR(X)-20	20	40	PPRF/BVUA-HW-1/PPR(X)-40	40	12
PPRF/BVUA-HW-1/PPR(X)-25	25	32	PPRF/BVUA-HW-1/PPR(X)-50	50	10
PPRF/BVUA-HW-1/PPR(X)-32	32	24	PPRF/BVUA-HW-1/PPR(X)-63	63	6



PP-R ball valve (brass alloy ball) with double union adaptors and PP-R fusion ends for cold and hot water use - butterfly handle

Product code	Inside diameter, D, mm	Quantity per carton, pcs	Product code	Inside diameter, D, mm	Quantity per carton, pcs
PPRF/BVUA-HW-1B/PPR(X)-20	20	40	PPRF/BVUA-HW-1B/PPR(X)-32	32	24
PPRF/BVUA-HW-1B/PPR(X)-25	25	32			



PP-R ball valve (PPSU ball) with double union adaptors and PP-R fusion ends for cold and hot water use - long handle

Product code	Inside diameter, D, mm	Quantity per carton, pcs	Product code	Inside diameter, D, mm	Quantity per carton, pcs
PPRF/BVUA-HW-2/PPR(X)-20	20	40	PPRF/BVUA-HW-2/PPR(X)-40	40	12
PPRF/BVUA-HW-2/PPR(X)-25	25	32	PPRF/BVUA-HW-2/PPR(X)-50	50	10
PPRF/BVUA-HW-2/PPR(X)-32	32	24	PPRF/BVUA-HW-2/PPR(X)-63	63	6



PP-R ball valve (PPSU ball) with double union adaptors and PP-R fusion ends for cold and hot water use - butterfly handle

Product code	Inside diameter, D, mm	Quantity per carton, pcs	Product code	Inside diameter, D, mm	Quantity per carton, pcs
PPRF/BVUA-HW-2B/PPR(X)-20	20	40	PPRF/BVUA-HW-2B/PPR(X)-32	32	24
PPRF/BVUA-HW-2B/PPR(X)-25	25	32			



PP-R ball valve (ABS ball) with double union adaptors and PP-R fusion ends for cold water use - long handle

Product code	Inside diameter, D, mm	Quantity per carton, pcs	Product code	Inside diameter, D, mm	Quantity per carton, pcs
PPRF/BVUA-CW/PPR(X)-20	20	40	PPRF/BVUA-CW/PPR(X)-40	40	12
PPRF/BVUA-CW/PPR(X)-25	25	32	PPRF/BVUA-CW/PPR(X)-50	50	10
PPRF/BVUA-CW/PPR(X)-32	32	24	PPRF/BVUA-CW/PPR(X)-63	63	6

The product produced according to the international Standard ISO: EN ISO 15874:2013
 German Standards: DIN 8077:2008; DIN 8078:2008; DIN 16962
 American Standards: ASTM F 2389-2017a; NSF/ANSI 14-2016a; NSF/ANSI 61-2016

BLUE OCEAN VALVES FOR PP-R PIPING SYSTEM



PP-R ball valve (ABS ball) with double union adaptors and PP-R fusion ends for cold water use - butterfly handle

Product code	Inside diameter, D, mm		Quantity per carton, pcs	Product code	Inside diameter, D, mm		Quantity per carton, pcs
PPRF/BVUA-CW - B/PPR(X)-20	20		40	PPRF/BVUA-CW - B/PPR(X)-32	32		24
PPRF/BVUA-CW - B/PPR(X)-25	25		32				



PP-R ball valve for hot water use FFT (brass alloy ball) - long handle

Product code	Inside diameter		Quantity per carton, pcs	Product code	Inside diameter		Quantity per carton, pcs
	R, inch	R, inch			R, inch	R, inch	
PPRF/BV-HW-1/PPR(X)-1/2" FFT	1/2"	1/2"	50	PPRF/BV-HW-1/PPR(X)-1"	1"	1"	30
PPRF/BV-HW-1/PPR(X)-3/4" FFT	3/4"	3/4"	40				

Notice: Euro standard CW617 natural yellow colour brass alloy inserts (optionally available CW614 with nickel plated surface)



PP-R ball valve for hot water use FFT (brass alloy ball) - butterfly handle

Product code	Inside diameter		Quantity per carton, pcs	Product code	Inside diameter		Quantity per carton, pcs
	R, inch	R, inch			R, inch	R, inch	
PPRF/BV-HW-1B/PPR(X)-1/2" FFT	1/2"	1/2"	75	PPRF/BV-HW-1B/PPR(X)-1" FFT	1"	1"	40
PPRF/BV-HW-1B/PPR(X)-3/4" FFT	3/4"	3/4"	60				

Notice: Euro standard CW617 natural yellow colour brass alloy inserts (optionally available CW614 with nickel plated surface)



PP-R ball valve for hot water use FFT (PPSU ball) - long handle

Product code	Inside diameter		Quantity per carton, pcs	Product code	Inside diameter		Quantity per carton, pcs
	R, inch	R, inch			R, inch	R, inch	
PPRF/BV-HW-2/PPR(X)-1/2" FFT	1/2"	1/2"	50	PPRF/BV-HW-2/PPR(X)-1" FFT	1"	1"	30
PPRF/BV-HW-2/PPR(X)-3/4" FFT	3/4"	3/4"	40				

Notice: Euro standard CW617 natural yellow colour brass alloy inserts (optionally available CW614 with nickel plated surface)



PP-R ball valve for hot water use FFT (PPSU ball) - butterfly handle

Product code	Inside diameter		Quantity per carton, pcs	Product code	Inside diameter		Quantity per carton, pcs
	R, inch	R, inch			R, inch	R, inch	
PPRF/BV-HW-2B/PPR(X)-1/2" FFT	1/2"	1/2"	75	PPRF/BV-HW-2B/PPR(X)-1" FFT	1"	1"	40
PPRF/BV-HW-2B/PPR(X)-3/4" FFT	3/4"	3/4"	60				

Notice: Euro standard CW617 natural yellow colour brass alloy inserts (optionally available CW614 with nickel plated surface)



UNLIMITED INNOVATIONS

The product produced according to the international Standard ISO: EN ISO 15874:2013
 German Standards: DIN 8077:2008; DIN 8078:2008; DIN 16962
 American Standards: ASTM F 2389-2017a; NSF/ANSI 14-2016a; NSF/ANSI 61-2016



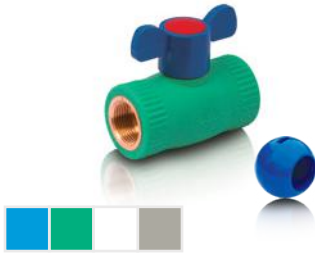
BLUE OCEAN VALVES FOR PP-R PIPING SYSTEM



PP-R ball valve for cold water use FFT (ABS ball) - long handle

Product code	Inside diameter		Quantity per carton, pcs	Product code	Inside diameter		Quantity per carton, pcs
	R, inch	R, inch			R, inch	R, inch	
PPRF/BV-CW/PPR(X)-1/2" FFT	1/2"	1/2"	50	PPRF/BV-CW/PPR(X)-1" FFT	1"	1"	30
PPRF/BV-CW/PPR(X)-3/4" FFT	3/4"	3/4"	40				

Notice: Euro standard CW617 natural yellow colour brass alloy inserts (optionally available CW614 with nickel plated surface)



PP-R ball valve for cold water use FFT (ABS ball) - butterfly handle

Product code	Inside diameter		Quantity per carton, pcs	Product code	Inside diameter		Quantity per carton, pcs
	R, inch	R, inch			R, inch	R, inch	
PPRF/BV-CW-B/PPR(X)-1/2" FFT	1/2"	1/2"	75	PPRF/BV-CW-B/PPR(X)-1" FFT	1"	1"	40
PPRF/BV-CW-B/PPR(X)-3/4" FFT	3/4"	3/4"	60				

Notice: Euro standard CW617 natural yellow colour brass alloy inserts (optionally available CW614 with nickel plated surface)



PP-R ball valve for hot water use FMT (brass alloy ball) - long handle

Product code	Inside / Outside diameter		Quantity per carton, pcs	Product code	Inside / Outside diameter		Quantity per carton, pcs
	R, inch	R, inch			R, inch	R, inch	
PPRF/BV-HW-1/PPR(X)-1/2" FMT	1/2"	1/2"	50	PPRF/BV-HW-1/PPR(X)-1" FMT	1"	1"	30
PPRF/BV-HW-1/PPR(X)-3/4" FMT	3/4"	3/4"	40				

Notice: Euro standard CW617 natural yellow colour brass alloy inserts (optionally available CW614 with nickel plated surface)



PP-R ball valve for hot water use FMT (brass alloy ball) - butterfly handle

Product code	Inside / Outside diameter		Quantity per carton, pcs	Product code	Inside / Outside diameter		Quantity per carton, pcs
	R, inch	R, inch			R, inch	R, inch	
PPRF/BV-HW-1B/PPR(X)-1/2" FMT	1/2"	1/2"	75	PPRF/BV-HW-1B/PPR(X)-1" FMT	1"	1"	40
PPRF/BV-HW-1B/PPR(X)-3/4" FMT	3/4"	3/4"	60				

Notice: Euro standard CW617 natural yellow colour brass alloy inserts (optionally available CW614 with nickel plated surface)



PP-R ball valve for hot water use FMT (PPSU ball) - long handle

Product code	Inside / Outside diameter		Quantity per carton, pcs	Product code	Inside / Outside diameter		Quantity per carton, pcs
	R, inch	R, inch			R, inch	R, inch	
PPRF/BV-HW-2/PPR(X)-1/2" FMT	1/2"	1/2"	50	PPRF/BV-HW-2/PPR(X)-1" FMT	1"	1"	30
PPRF/BV-HW-2/PPR(X)-3/4" FMT	3/4"	3/4"	40				

Notice: Euro standard CW617 natural yellow colour brass alloy inserts (optionally available CW614 with nickel plated surface)

The product produced according to the international Standard ISO: EN ISO 15874:2013
 German Standards: DIN 8077:2008; DIN 8078:2008; DIN 16962
 American Standards: ASTM F 2389-2017a; NSF/ANSI 14-2016a; NSF/ANSI 61-2016

BLUE OCEAN VALVES FOR PP-R PIPING SYSTEM



PP-R ball valve for hot water use FMT (PPSU ball) - butterfly handle

Product code	Inside / Outside diameter		Quantity per carton, pcs	Product code	Inside / Outside diameter		Quantity per carton, pcs
	R, inch	R, inch			R, inch	R, inch	
PPRF/BV-HW-2B/PPR(X)-½" FMT	½"	½"	75	PPRF/BV-HW-2B/PPR(X)-1" FMT	1"	1"	40
PPRF/BV-HW-2B/PPR(X)-¾" FMT	¾"	¾"	60				

Notice: Euro standard CW617 natural yellow colour brass alloy inserts (optionally available CW614 with nickel plated surface)



PP-R ball valve for cold water use FMT (ABS ball) - long handle

Product code	Inside / Outside diameter		Quantity per carton, pcs	Product code	Inside / Outside diameter		Quantity per carton, pcs
	R, inch	R, inch			R, inch	R, inch	
PPRF/BV-CW/PPR(X)-½" FMT	½"	½"	50	PPRF/BV-CW/PPR(X)-1" FMT	1"	1"	30
PPRF/BV-CW/PPR(X)-¾" FMT	¾"	¾"	40				

Notice: Euro standard CW617 natural yellow colour brass alloy inserts (optionally available CW614 with nickel plated surface)



PP-R ball valve for cold water use FMT (ABS ball) - butterfly handle

Product code	Inside / Outside diameter		Quantity per carton, pcs	Product code	Inside / Outside diameter		Quantity per carton, pcs
	R, inch	R, inch			R, inch	R, inch	
PPRF/BV-CW-B/PPR(X)-½" FMT	½"	½"	75	PPRF/BV-CW-B/PPR(X)-1" FMT	1"	1"	40
PPRF/BV-CW-B/PPR(X)-¾" FMT	¾"	¾"	60				

Notice: Euro standard CW617 natural yellow colour brass alloy inserts (optionally available CW614 with nickel plated surface)



PP-R ball valve for hot water use MMT (brass alloy ball) - long handle

Product code	Outside diameter		Quantity per carton, pcs	Product code	Outside diameter		Quantity per carton, pcs
	R, inch	R, inch			R, inch	R, inch	
PPRF/BV-HW-1/PPR(X)-½" MMT	½"	½"	50	PPRF/BV-HW-1/PPR(X)-1" MMT	1"	1"	30
PPRF/BV-HW-1/PPR(X)-¾" MMT	¾"	¾"	40				

Notice: Euro standard CW617 natural yellow colour brass alloy inserts (optionally available CW614 with nickel plated surface)



PP-R ball valve for hot water use MMT (brass alloy ball) - butterfly handle

Product code	Outside diameter		Quantity per carton, pcs	Product code	Outside diameter		Quantity per carton, pcs
	R, inch	R, inch			R, inch	R, inch	
PPRF/BV-HW-1B/PPR(X)-½" MMT	½"	½"	75	PPRF/BV-HW-1B/PPR(X)-1" MMT	1"	1"	40
PPRF/BV-HW-1B/PPR(X)-¾" MMT	¾"	¾"	60				

Notice: Euro standard CW617 natural yellow colour brass alloy inserts (optionally available CW614 with nickel plated surface)



UNLIMITED INNOVATIONS

The product produced according to the international Standard ISO: EN ISO 15874:2013
 German Standards: DIN 8077:2008; DIN 8078:2008; DIN 16962
 American Standards: ASTM F 2389-2017a; NSF/ANSI 14-2016a; NSF/ANSI 61-2016



BLUE OCEAN VALVES FOR PP-R PIPING SYSTEM



PP-R ball valve for hot water use MMT (PPSU ball) - long handle

Product code	Outside diameter		Quantity per carton, pcs	Product code	Outside diameter		Quantity per carton, pcs
	R, inch	R, inch			R, inch	R, inch	
PPRF/BV-HW-2/PPR(X)-½" MMT	½"	½"	50	PPRF/BV-HW-2/PPR(X)-1" MMT	1"	1"	30
PPRF/BV-HW-2/PPR(X)-¾" MMT	¾"	¾"	40				

Notice: Euro standard CW617 natural yellow colour brass alloy inserts (optionally available CW614 with nickel plated surface)



PP-R ball valve for hot water use MMT (PPSU ball) - butterfly handle

Product code	Outside diameter		Quantity per carton, pcs	Product code	Outside diameter		Quantity per carton, pcs
	R, inch	R, inch			R, inch	R, inch	
PPRF/BV-HW-2B/PPR(X)-½" MMT	½"	½"	75	PPRF/BV-HW-2B/PPR(X)-1" MMT	1"	1"	40
PPRF/BV-HW-2B/PPR(X)-¾" MMT	¾"	¾"	60				

Notice: Euro standard CW617 natural yellow colour brass alloy inserts (optionally available CW614 with nickel plated surface)



PP-R ball valve for cold water use MMT (ABS ball) - long handle

Product code	Outside diameter		Quantity per carton, pcs	Product code	Outside diameter		Quantity per carton, pcs
	R, inch	R, inch			R, inch	R, inch	
PPRF/BV-CW/PPR(X)-½" MMT	½"	½"	50	PPRF/BV-CW/PPR(X)-1" MMT	1"	1"	30
PPRF/BV-CW/PPR(X)-¾" MMT	¾"	¾"	40				

Notice: Euro standard CW617 natural yellow colour brass alloy inserts (optionally available CW614 with nickel plated surface)



PP-R ball valve for cold water use MMT (ABS ball) - butterfly handle

Product code	Outside diameter		Quantity per carton, pcs	Product code	Outside diameter		Quantity per carton, pcs
	R, inch	R, inch			R, inch	R, inch	
PPRF/BV-CW-B/PPR(X)-½" MMT	½"	½"	75	PPRF/BV-CW-B/PPR(X)-1" MMT	1"	1"	40
PPRF/BV-CW-B/PPR(X)-¾" MMT	¾"	¾"	60				

Notice: Euro standard CW617 natural yellow colour brass alloy inserts (optionally available CW614 with nickel plated surface)



PP-R ball valve for hot water use with FT + PPR end (brass alloy ball) - long handle

Product code	Inside diameter		Quantity per carton, pcs	Product code	Inside diameter		Quantity per carton, pcs
	D, mm	R, inch			D, mm	R, inch	
PPRF/BV-HW-1/PPR(X)-20x½" FT	20	½"	50	PPRF/BV-HW-1/PPR(X)-32x1" FT	32	1"	30
PPRF/BV-HW-1/PPR(X)-25x¾" FT	25	¾"	40				

Notice: Euro standard CW617 natural yellow colour brass alloy inserts (optionally available CW614 with nickel plated surface)

The product produced according to the international Standard ISO: EN ISO 15874:2013
 German Standards: DIN 8077:2008; DIN 8078:2008; DIN 16962
 American Standards: ASTM F 2389-2017a; NSF/ANSI 14-2016a; NSF/ANSI 61-2016

BLUE OCEAN VALVES FOR PP-R PIPING SYSTEM



PP-R ball valve for hot water use with FT + PPR end (brass alloy ball) - butterfly handle

Product code	Inside diameter		Quantity per carton, pcs	Product code	Inside diameter		Quantity per carton, pcs
	D, mm	R, inch			D, mm	R, inch	
PPRF/BV-HW-1B/PPR(X)-20x½" FT	20	¾"	75	PPRF/BV-HW-1B/PPR(X)-32x1" FT	32	1"	40
PPRF/BV-HW-1B/PPR(X)-25x¾" FT	25	¾"	60				

Notice: Euro standard CW617 natural yellow colour brass alloy inserts (optionally available CW614 with nickel plated surface)



PP-R ball valve for hot water use with FT + PPR end (PPSU ball) - long handle

Product code	Inside diameter		Quantity per carton, pcs	Product code	Inside diameter		Quantity per carton, pcs
	D, mm	R, inch			D, mm	R, inch	
PPRF/BV-HW-2/PPR(X)-20x½" FT	20	¾"	50	PPRF/BV-HW-2/PPR(X)-32x1" FT	32	1"	30
PPRF/BV-HW-2/PPR(X)-25x¾" FT	25	¾"	40				

Notice: Euro standard CW617 natural yellow colour brass alloy inserts (optionally available CW614 with nickel plated surface)



PP-R ball valve for hot water use with FT + PPR end (PPSU ball) - butterfly handle

Product code	Inside diameter		Quantity per carton, pcs	Product code	Inside diameter		Quantity per carton, pcs
	D, mm	R, inch			D, mm	R, inch	
PPRF/BV-HW-2B/PPR(X)-20x½" FT	20	¾"	75	PPRF/BV-HW-2B/PPR(X)-32x1" FT	32	1"	40
PPRF/BV-HW-2B/PPR(X)-25x¾" FT	25	¾"	60				

Notice: Euro standard CW617 natural yellow colour brass alloy inserts (optionally available CW614 with nickel plated surface)



PP-R ball valve for cold water use with FT + PPR end (ABS ball) - long handle

Product code	Inside diameter		Quantity per carton, pcs	Product code	Inside diameter		Quantity per carton, pcs
	D, mm	R, inch			D, mm	R, inch	
PPRF/BV-CW/PPR(X)-20x½" FT	20	¾"	50	PPRF/BV-CW/PPR(X)-32x1" FT	32	1"	30
PPRF/BV-CW/PPR(X)-25x¾" FT	25	¾"	40				

Notice: Euro standard CW617 natural yellow colour brass alloy inserts (optionally available CW614 with nickel plated surface)



PP-R ball valve for cold water use with FT + PPR end (ABS ball) - butterfly handle

Product code	Inside diameter		Quantity per carton, pcs	Product code	Inside diameter		Quantity per carton, pcs
	D, mm	R, inch			D, mm	R, inch	
PPRF/BV-CW-B/PPR(X)-20x½" FT	20	¾"	75	PPRF/BV-CW-B/PPR(X)-32x1" FT	32	1"	40
PPRF/BV-CW-B/PPR(X)-25x¾" FT	25	¾"	60				

Notice: Euro standard CW617 natural yellow colour brass alloy inserts (optionally available CW614 with nickel plated surface)



UNLIMITED INNOVATIONS

The product produced according to the international Standard ISO: EN ISO 15874:2013
 German Standards: DIN 8077:2008; DIN 8078:2008; DIN 16962
 American Standards: ASTM F 2389-2017a; NSF/ANSI 14-2016a; NSF/ANSI 61-2016



BLUE OCEAN VALVES FOR PP-R PIPING SYSTEM



PP-R ball valve for hot water use with MT + PPR end (brass alloy ball) - long handle

Product code	Inside / Outside diameter		Quantity per carton, pcs	Product code	Inside / Outside diameter		Quantity per carton, pcs
	D, mm	R, inch			D, mm	R, inch	
PPRF/BV-HW-1/PPR(X)-20x½" MT	20	½"	50	PPRF/BV-HW-1/PPR(X)-32x1" MT	32	1"	30
PPRF/BV-HW-1/PPR(X)-25x¾" MT	25	¾"	40				

Notice: Euro standard CW617 natural yellow colour brass alloy inserts (optionally available CW614 with nickel plated surface)



PP-R ball valve for hot water use with MT + PPR end (brass alloy ball) - butterfly handle

Product code	Inside / Outside diameter		Quantity per carton, pcs	Product code	Inside / Outside diameter		Quantity per carton, pcs
	D, mm	R, inch			D, mm	R, inch	
PPRF/BV-HW-1B/PPR(X)-20x½" MT	20	½"	75	PPRF/BV-HW-1B/PPR(X)-32x1" MT	32	1"	40
PPRF/BV-HW-1B/PPR(X)-25x¾" MT	25	¾"	60				

Notice: Euro standard CW617 natural yellow colour brass alloy inserts (optionally available CW614 with nickel plated surface)



PP-R ball valve for hot water use with MT + PPR end (PPSU ball) - long handle

Product code	Inside / Outside diameter		Quantity per carton, pcs	Product code	Inside / Outside diameter		Quantity per carton, pcs
	D, mm	R, inch			D, mm	R, inch	
PPRF/BV-HW-2/PPR(X)-20x½" MT	20	½"	50	PPRF/BV-HW-2/PPR(X)-32x1" MT	32	1"	30
PPRF/BV-HW-2/PPR(X)-25x¾" MT	25	¾"	40				

Notice: Euro standard CW617 natural yellow colour brass alloy inserts (optionally available CW614 with nickel plated surface)



PP-R ball valve for hot water use with MT + PPR end (PPSU ball) - butterfly handle

Product code	Inside / Outside diameter		Quantity per carton, pcs	Product code	Inside / Outside diameter		Quantity per carton, pcs
	D, mm	R, inch			D, mm	R, inch	
PPRF/BV-HW-2B/PPR(X)-20x½" MT	20	½"	75	PPRF/BV-HW-2B/PPR(X)-32x1" MT	32	1"	40
PPRF/BV-HW-2B/PPR(X)-25x¾" MT	25	¾"	60				

Notice: Euro standard CW617 natural yellow colour brass alloy inserts (optionally available CW614 with nickel plated surface)



PP-R ball valve for cold water use with MT + PPR end (ABS ball) - long handle

Product code	Inside / Outside diameter		Quantity per carton, pcs	Product code	Inside / Outside diameter		Quantity per carton, pcs
	D, mm	R, inch			D, mm	R, inch	
PPRF/BV-CW/PPR(X)-20x½" MT	20	½"	50	PPRF/BV-CW/PPR(X)-32x1" MT	32	1"	30
PPRF/BV-CW/PPR(X)-25x¾" MT	25	¾"	40				

Notice: Euro standard CW617 natural yellow colour brass alloy inserts (optionally available CW614 with nickel plated surface)

The product produced according to the international Standard ISO: EN ISO 15874:2013
 German Standards: DIN 8077:2008; DIN 8078:2008; DIN 16962
 American Standards: ASTM F 2389-2017a; NSF/ANSI 14-2016a; NSF/ANSI 61-2016

BLUE OCEAN VALVES FOR PP-R PIPING SYSTEM



PP-R ball valve for cold water use with MT + PPR end (ABS ball) - butterfly handle

Product code	Inside / Outside diameter		Quantity per carton, pcs	Product code	Inside / Outside diameter		Quantity per carton, pcs
	D, mm	R, inch			D, mm	R, inch	
PPRF/BV-CW-B/PPR(X)-20x½" MT	20	½"	75	PPRF/BV-CW-B/PPR(X)-32x1" MT	32	1"	40
PPRF/BV-CW-B/PPR(X)-25x¾" MT	25	¾"	60				

Notice: Euro standard CW617 natural yellow colour brass alloy inserts (optionally available CW614 with nickel plated surface)

BLUE OCEAN filters and back flow valves for PP-R piping systems



PP-R inclined filter

Product code	Inside diameter, D, mm	Quantity per carton, pcs	Product code	Inside diameter, D, mm	Quantity per carton, pcs
PPRF/IF(X)-20	20	120	PPRF/IF(X)-32	32	48
PPRF/IF(X)-25	25	60			

Notice: Euro standard CW617 natural yellow colour brass alloy inserts (optionally available CW614 with nickel plated surface)



PP-R inclined back flow valve

Product code	Inside diameter, D, mm	Quantity per carton, pcs	Product code	Inside diameter, D, mm	Quantity per carton, pcs
PPRF/IBF(X)-20	20	120	PPRF/IBF(X)-32	32	48
PPRF/IBF(X)-25	25	60			

Notice: Euro standard CW617 natural yellow colour brass alloy inserts (optionally available CW614 with nickel plated surface)



PP-R draining branch with nipple and M/F ends

Product code	Inside diameter, D, mm	Quantity per carton, pcs	Product code	Inside diameter, D, mm	Quantity per carton, pcs
PPRF/DBMF(X)-20	20	150	PPRF/DBMF(X)-40	40	60
PPRF/DBMF(X)-25	25	120	PPRF/DBMF(X)-50	50	45
PPRF/DBMF(X)-32	32	90	PPRF/DBMF(X)-63	63	24

Notice: Euro standard CW617 natural yellow colour brass alloy inserts (optionally available CW614 with nickel plated surface)



UNLIMITED INNOVATIONS

The product produced according to the international Standard ISO: EN ISO 15874:2013
 German Standards: DIN 8077:2008; DIN 8078:2008; DIN 16962
 American Standards: ASTM F 2389-2017a; NSF/ANSI 14-2016a; NSF/ANSI 61-2016



SOCKET FUSION WELDING TOOLS, CUTTERS AND ACCESSORIES FOR BLUE OCEAN PP-R PIPING SYSTEM

Socket fusion welders and welding machines for socket fusion welding of BLUE OCEAN PP-R piping systems



Socket fusion welders with fixed temperature for PP-R piping systems

Product code	Welded pipe outside diameter D, mm	Quantity per carton, complete
PPRWU/20 - 32	20 - 32	4
PPRWU/20 - 63	20 - 63	2
PPRWU/75 - 110	75 - 110	2



Socket fusion welders with digital display on side for PP-R piping systems

Product code	Welded pipe outside diameter D, mm	Quantity per carton, complete
PPRWU/20 - 32/D	20 - 32	4
PPRWU/20 - 63/D	20 - 63	2
PPRWU/75 - 110/D	75 - 110	2



Socket fusion welders with digital display on top for PP-R piping systems

Product code	Welded pipe outside diameter D, mm	Quantity per carton, complete
PPRWU/20 - 63/D	20 - 63	2
PPRWU/75 - 110/D	75 - 110	2



Socket fusion welding machines with digital display for big diameter pipes for PP-R piping systems

Product code	Welded pipe outside diameter D, mm	Quantity per carton, complete
PPRWM/32 - 110/D	32 - 110	1
PPRWM/50 - 160/D	50 - 160	1

The product produced according to the international Standard ISO: EN ISO 15874:2013
 German Standards: DIN 8077:2008; DIN 8078:2008; DIN 16962
 American Standards: ASTM F 2389-2017a; NSF/ANSI 14-2016a; NSF/ANSI 61-2016

SOCKET FUSION WELDING TOOLS, CUTTERS AND ACCESSORIES FOR BLUE OCEAN PP-R PIPING SYSTEM

Socket fusion heating tools for socket fusion welding of BLUE OCEAN PP-R piping systems



Heating tools for socket fusion welding of PP-R piping products

Product code	Welded pipes outside diameter D, mm	Quantity per carton, complete	Product code	Welded pipes outside diameter D, mm	Quantity per carton, complete
PPRT/HT-16	16	180	PPRT/HT-75	75	20
PPRT/HT-20	20	150	PPRT/HT-90	90	16
PPRT/HT-25	25	150	PPRT/HT-110	110	12
PPRT/HT-32	32	120	PPRT/HT-125	125	10
PPRT/HT-40	40	50	PPRT/HT-140	140	8
PPRT/HT-50	50	50	PPRT/HT-160	160	6
PPRT/HT-63	63	30			



Heating tools for weld-in saddle socket fusion of PP-R piping products

Product code	Main pipe outside diameter, D, mm	Weld-in saddle fitting inside diameter, d, mm	Quantity per carton, complete
PPRT/WIS-40/20-25	40	20-25	90
PPRT/WIS-50/20-25	50	20-25	90
PPRT/WIS-63/20-25	63	20-25	90
PPRT/WIS-63/32	63	32	50
PPRT/WIS-75/20-25	75	20-25	90
PPRT/WIS-75/32	75	32	50
PPRT/WIS-75/40	75	40	30
PPRT/WIS-90/20-25	90	20-25	90
PPRT/WIS-90/32	90	32	50
PPRT/WIS-90/40	90	40	30
PPRT/WIS-110/20-25	110	20-25	90
PPRT/WIS-110/32	110	32	50
PPRT/WIS-110/40	110	40	30
PPRT/WIS-110/50	110	50	30
PPRT/WIS-110/63	110	63	15
PPRT/WIS-125/20-25	125	20-25	90
PPRT/WIS-125/32	125	32	50
PPRT/WIS-125/40	125	40	30
PPRT/WIS-125/50	125	50	30
PPRT/WIS-125/63	125	63	15



Repairing socket fusion heating tools for PP-R repairing stick for PP-R piping products

Product code	Welded pipes outside diameter D, mm	Quantity per carton, complete	Product code	Welded pipes outside diameter D, mm	Quantity per carton, complete
PPRT/RHT-7	7	200	PPRT/RHT-11	11	200



UNLIMITED
INNOVATIONS

The product produced according to the international Standard ISO: EN ISO 15874:2013
German Standards: DIN 8077:2008; DIN 8078:2008; DIN 16962
American Standards: ASTM F 2389-2017a; NSF/ANSI 14-2016a; NSF/ANSI 61-2016



BLUE OCEAN cutting tools for BLUE OCEAN PP-R piping systems



Pipe cutter (Light) for PP-R single layer, polymer composite and polymer - aluminum composite pipes

Product code	Pipe outside diameter, D, mm	Quantity per carton, complete
BO SUPERCUT/PCU - 001LA	16 - 40	40



Pipe cutter (Heavy) for PP-R single layer, polymer composite and polymer - aluminum composite pipes

Product code	Pipe outside diameter, D, mm	Quantity per carton, complete
BO SUPERCUT/PCU - 002HA	16 - 40	40



Pipe cutter for PP-R single layer, polymer composite and polymer - aluminum composite pipes

Product code	Pipe outside diameter, D, mm	Quantity per carton, complete
BO SUPERCUT/PCU - 003A	16 - 40	40



Pipe cutter (Heavy) for PP-R single layer, polymer composite and polymer - aluminum composite pipes

Product code	Pipe outside diameter, D, mm	Quantity per carton, complete
BO SUPERCUT/PCU - 004HA	16 - 40	40



Pipe cutter (Light) for under floor heating and water heating PE-RT (PP-R) single layer, polymer composite and polymer - aluminum composite small diameter pipes

Product code	Pipe outside diameter, D, mm	Quantity per carton, complete
BO SUPERCUT/ CU - 006LM	12 - 32	50

The product produced according to the international Standard ISO: EN ISO 15874:2013
 German Standards: DIN 8077:2008; DIN 8078:2008; DIN 16962
 American Standards: ASTM F 2389-2017a; NSF/ANSI 14-2016a; NSF/ANSI 61-2016

SOCKET FUSION WELDING TOOLS, CUTTERS AND ACCESSORIES FOR BLUE OCEAN PP-R PIPING SYSTEM



Pipe cutter (Light) for under floor heating and water heating PE-RT (PP-R) single layer, polymer composite and polymer - aluminum composite small diameter pipes

Product code	Pipe outside diameter, D, mm	Quantity per carton, complete
BO SUPERCUT/ CU - 007LM	12 - 32	50



Pipe cutter (Light) for under floor heating and water heating PE-RT (PP-R) single layer, polymer composite and polymer - aluminum composite small diameter pipes

Product code	Pipe outside diameter, D, mm	Quantity per carton, complete
BO SUPERCUT/ CU - 008LM	12 - 32	50



Professional plastic pipe cutter for PP-R single layer, polymer composite and polymer - aluminum composite pipes

Product code	Pipe outside diameter, D, mm	Quantity per carton, complete
BO SUPERCUT/ PCU - 063M	20 - 63	8



Professional plastic pipe cutter for PP-R single layer, polymer composite and polymer - aluminum composite pipes

Product code	Pipe outside diameter, D, mm	Quantity per carton, complete
BO SUPERCUT/ PCU - 075A	20 - 75	8



Wheel style plastic pipe round cutter for PP-R single layer, polymer composite, polymer - aluminum composite and polymer - copper composite pipes

Product code	Pipe outside diameter, D, mm	Quantity per carton, complete
BO SUPERCUT / WRCU 12 - 63	12 - 63	30



Wheel style plastic pipe round cutter for PP-R single layer, polymer composite, polymer - aluminum composite and polymer - copper composite pipes

产品编号 Product code	Pipe outside diameter, D, mm	Quantity per carton, complete
BO SUPERCUT / WRCU 75 - 110	75 - 110	5



UNLIMITED
INNOVATIONS

The product produced according to the international Standard ISO: EN ISO 15874:2013
German Standards: DIN 8077:2008; DIN 8078:2008; DIN 16962
American Standards: ASTM F 2389-2017a; NSF/ANSI 14-2016a; NSF/ANSI 61-2016





Wheel style plastic pipe round cutter for PP-R single layer, polymer composite, polymer - aluminum composite and polymer - copper composite pipes

Product code	Pipe outside diameter, D, mm	Quantity per carton, complete
BO SUPERCUT / WRCU 110 - 160R	110 - 160	4

BLUE OCEAN other tools for BLUE OCEAN PP-R piping systems



Drill head for weld-in saddle fittings

Product code	Weld-in saddle fitting inside diameter, D, mm	Quantity per carton, complete
PPRT/SDH - 20/25	20/25	80
PPRT/SDH - 32	32	50
PPRT/SDH - 40	40	40
PPRT/SDH - 50	50	30
PPRT/SDH - 63	63	20



Manual peeling tool for BO-STABI pipes

Product code	Outside diameter of inner PP-R pipe, D, mm	Quantity per carton, complete
PPRT/MPT-20/25	20/25	40
PPRT/MPT-32/40	32/40	30
PPRT/MPT-50/63	50/63	20



Peeling head for electrical tool for BO-STABI pipes

Product code	Outside diameter of inner PP-R pipe, D, mm	Quantity per carton, complete
PPRT/PH-ET-20	20	70
PPRT/PH-ET-25	25	60
PPRT/PH-ET-32	32	50
PPRT/PH-ET-40	40	30
PPRT/PH-ET-50	50	20
PPRT/PH-ET-63	63	15

The product produced according to the international Standard ISO: EN ISO 15874:2013
 German Standards: DIN 8077:2008; DIN 8078:2008; DIN 16962
 American Standards: ASTM F 2389-2017a; NSF/ANSI 14-2016a; NSF/ANSI 61-2016

SOCKET FUSION WELDING TOOLS, CUTTERS AND ACCESSORIES FOR BLUE OCEAN PP-R PIPING SYSTEM

BLUE OCEAN metal clamps with EPDM protector for BLUE OCEAN PP-R piping systems



Pipe metal clamp Type 01 with EPDM protector, threaded screw and PE fixing plug

Product code	Pipe outside diameter, D, mm/ Threaded screw diameter x length, mm	Quantity per carton, complete
PPRT/MSHTS-20/8x80	20/8x80	400
PPRT/MSHTS-25/8x80	25/8x80	300
PPRT/MSHTS-32/8x80	32/8x80	300
PPRT/MSHTS-40/8x80	40/8x80	200
PPRT/MSHTS-50/8x80	50/8x80	200
PPRT/MSHTS-63/8x80	63/8x80	150
PPRT/MSHTS-75/8x80	75/8x80	120
PPRT/MSHTS-90/10x110	90/10x110	80
PPRT/MSHTS-110/10x110	110/10x110	60
PPRT/MSHTS-125/10x110	125/10x110	50
PPRT/MSHTS-140/10x110	140/10x110	40
PPRT/MSHTS-160/10x110	160/10x110	40



Pipe metal clamp Type 01B with EPDM protector

Product code	Pipe outside diameter, D, mm/ Threaded nuts inside diameter, mm	Quantity per carton, complete
PPRT/MSHTS-20/8-B	20/8	600
PPRT/MSHTS-25/8-B	25/8	500
PPRT/MSHTS-32/8-B	32/8	350
PPRT/MSHTS-40/8-B	40/8	300
PPRT/MSHTS-50/8-B	50/8	250
PPRT/MSHTS-63/8-B	63/8	200
PPRT/MSHTS-75/8-B	75/8	160
PPRT/MSHTS-90/10-B	90/10	120
PPRT/MSHTS-110/10-B	110/10	90
PPRT/MSHTS-125/10-B	125/10	80
PPRT/MSHTS-140/10-B	140/10	60
PPRT/MSHTS-160/10-B	160/10	60



UNLIMITED
INNOVATIONS

The product produced according to the international Standard ISO: EN ISO 15874:2013
German Standards: DIN 8077:2008; DIN 8078:2008; DIN 16962
American Standards: ASTM F 2389-2017a; NSF/ANSI 14-2016a; NSF/ANSI 61-2016



SOCKET FUSION WELDING TOOLS, CUTTERS AND ACCESSORIES FOR BLUE OCEAN PP-R PIPING SYSTEM



Pipe metal clamp Type 02 with EPDM protector, threaded screw and PE fixing plug

Product code	Pipe outside diameter, D, mm/ Threaded screw diameter x length, mm	Quantity per carton, complete
PPRT/MSLTS-20/6x70	20/6x70	800
PPRT/MSLTS-25/6x70	25/6x70	600
PPRT/MSLTS-32/6x70	32/6x70	500
PPRT/MSLTS-20/8x80	20/8x80	400
PPRT/MSLTS-25/8x80	25/8x80	300
PPRT/MSLTS-32/8x80	32/8x80	300
PPRT/MSLTS-40/8x80	40/8x80	250
PPRT/MSLTS-50/8x80	50/8x80	200
PPRT/MSLTS-63/8x80	63/8x80	200
PPRT/MSLTS-75/8x80	75/8x80	150
PPRT/MSLTS-90/10x110	90/10x110	120
PPRT/MSLTS-110/10x110	110/10x110	80
PPRT/MSLTS-125/10x110	125/10x110	80
PPRT/MSLTS-140/10x110	140/10x110	80
PPRT/MSLTS-160/10x110	160/10x110	60



Pipe metal clamp Type 02B with EPDM protector

Product code	Pipe outside diameter, D, mm/ Threaded nuts inside diameter, mm	Quantity per carton, complete
PPRT/MSLTS-20/8-B	20/8	600
PPRT/MSLTS-25/8-B	25/8	500
PPRT/MSLTS-32/8-B	32/8	350
PPRT/MSLTS-40/8-B	40/8	300
PPRT/MSLTS-50/8-B	50/8	250
PPRT/MSLTS-63/8-B	63/8	250
PPRT/MSLTS-75/8-B	75/8	200
PPRT/MSLTS-90/10-B	90/10	150
PPRT/MSLTS-110/10-B	110/10	110
PPRT/MSLTS-125/10-B	125/10	110
PPRT/MSLTS-140/10-B	140/10	100
PPRT/MSLTS-160/10-B	160/10	100



Quick locking pipe metal clamp Type 03 with EPDM protector, side adjustable screw, threaded screw and PE fixing plug

Product code	Pipe outside diameter, D, mm/ Threaded screw diameter x length, mm	Quantity per carton, complete
PPRT/FMPC-SL-20/8-10x80	20/8-10x80	300
PPRT/FMPC-SL-25/8-10x80	25/8-10x80	200
PPRT/FMPC-SL-32/8-10x80	32/8-10x80	150
PPRT/FMPC-SL-40/8-10x80	40/8-10x80	150
PPRT/FMPC-SL-50/8-10x80	50/8-10x80	100
PPRT/FMPC-SL-63/8-10x80	63/8-10x80	80

The product produced according to the international Standard ISO: EN ISO 15874:2013
 German Standards: DIN 8077:2008; DIN 8078:2008; DIN 16962
 American Standards: ASTM F 2389-2017a; NSF/ANSI 14-2016a; NSF/ANSI 61-2016

SOCKET FUSION WELDING TOOLS, CUTTERS AND ACCESSORIES FOR BLUE OCEAN PP-R PIPING SYSTEM



Quick-locking pipe metal clamp Type 03 with EPDM protector

Product code	Pipe outside diameter, D, mm/ Threaded nuts inside diameter, mm	Quantity per carton, complete
PPRT/FMPC-SL-20/8-10-B	20/8-10	300
PPRT/FMPC-SL-25/8-10-B	25/8-10	200
PPRT/FMPC-SL-32/8-10-B	32/8-10	150
PPRT/FMPC-SL-40/8-10-B	40/8-10	150
PPRT/FMPC-SL-50/8-10-B	50/8-10	100
PPRT/FMPC-SL-63/8-10-B	63/8-10	80



Double pipe metal clamp with EPDM protector, threaded screw and PE fixing plug

Product code	Pipe outside diameter, D, mm/ Threaded screw diameter x length, mm	Quantity per carton, complete
PPRT/DMPC-20x2/8x80	20x2/8x80	200
PPRT/DMPC-25x2/8x80	25x2/8x80	200
PPRT/DMPC-32x2/8x80	32x2/8x80	150



Double pipe metal clamp with EPDM protector

Product code	Pipe outside diameter, D, mm/ Threaded nuts inside diameter, mm	Quantity per carton, complete
PPRT/DMPC-20x2/8-B	20x2/8	200
PPRT/DMPC-25x2/8-B	25x2/8	200
PPRT/DMPC-32x2/8-B	32x2/8	150

P.T.F.E. thread sealing hermetic tape and measuring tape for BLUE OCEAN PP-R piping systems



P.T.F.E. thread sealing hermetic tape

Product code	Width, mm x thickness, mm x length, m	Quantity per carton, complete
BO/TSHT/12x0.075x10 - white	12x0.075x10	400
BO/TSHT/19x0.075x10 - white	19x0.075x10	320
BO/TSHT/25x0.075x10 - white	25x0.075x10	240
BO/TSHT/12x0.10x10 - white	12x0.10x10	400
BO/TSHT/19x0.10x10 - white	19x0.10x10	320
BO/TSHT/25x0.10x10 - white	25x0.10x10	240
BO/TSHT/19x0.20x15/professional, white	19x0.20x15	118
BO/TSHT/12x0.10x10/yellow for gas pipes	12x0.10x10	400



Measuring Tape for BLUE OCEAN PP-R piping systems

Product code	Measuring length, meters	Quantity per carton, complete
BO/AA / MT - 01/ 5M	5 meters	60



UNLIMITED
INNOVATIONS

The product produced according to the international Standard ISO: EN ISO 15874:2013
German Standards: DIN 8077:2008; DIN 8078:2008; DIN 16962
American Standards: ASTM F 2389-2017a; NSF/ANSI 14-2016a; NSF/ANSI 61-2016

Blue Ocean Industrial Development (UK) Group Limited

25 years of experience





UNLIMITED
INNOVATIONS

BLUE OCEAN INDUSTRIAL DEVELOPMENT (UK) GROUP LIMITED

ATLANTIC HOUSE, IMPERIAL WAY, READING,
BERKSHIRE, RG2 0TD, UNITED KINGDOM

customer-service@blueoceangroup.org

info@blueoceangroup.org

www.blueoceangroup.org

