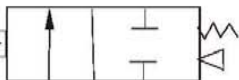


系列

US Series



180°C

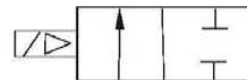


HUS Series

HUS



New High Temperature 250°C



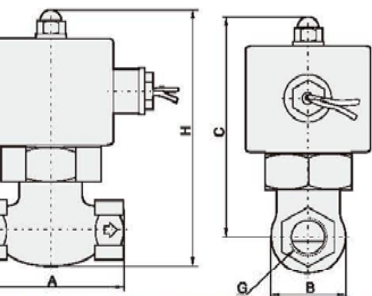
订货举例 How to Order?

10 接管口径  
Port size  
10: 3/8"  
15: 1/2"  
20: 3/4"  
25: 1"  
35: 1-1/4"  
40: 1-1/2"  
50: 2"

E1 电压  
Voltage  
E1: AC110V  
E2: AC220V  
E3: AC380V  
E4: DC24V  
E5: DC12V  
E6: AC36V  
E7: AC24V

例, 二位三通, 3/8"接管口径, 电压: AC220V, 型号: US-10E2  
ries, 2 port, 2 position, 3/8" port size, voltage: AC220V,  
US-10E2

外形尺寸图 Main Dimensions (mm)



规格 Specifications

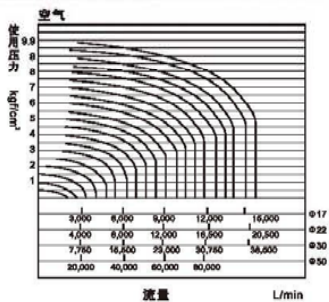
Model	US-10E2	US-15E2	US-20E2	US-25E2	US-35E2	US-40E2	US-50E2
Working medium	空气、水、蒸汽 / Air, Water, Steam						
Acting type	先导式, 常闭 / Pilot type, N.C.						
Orifice(mm)	17	22	30	50			
CV value	4.8	12	20	48			
Port size	3/8"	1/2"	3/4"	1"	1-1/4"	1-1/2"	2"
Fluid viscosity	20 CST 以下 Below 20 CST						
Working pressure(Bar)	1-15						
Guaranteed pressure(Bar)	23						
Working temperature (°C)	-5~180						
Voltage range	-15~10%						
Valve body material	黄铜 Brass						
Seal material	聚四氟乙烯 PTFE						

\* 以下表格中电压为AC220V Voltage: AC220V

产品特性 Product Features

- 常闭电磁阀, 铜阀体, 适用于蒸汽
- 接管口径从3/8"到2"
- 活塞先导式, 耐高温高压
- Normal close, brass body, especially for steam
- Sizes range from 3/8" to 2"
- Piston pilot solenoid valve with high working pressure and temperature

流量特性表 Flow Chart



型号 Model	A	B	C	H	G
US-10	82	42	125	148	3/8"
US-15	82	42	125	148	1/2"
US-20	82	42	125	148	3/4"
US-25	90.5	52	138	162	1"
US-35	111	74	148	185	1-1/4"
US-40	111	74	148	183	1-1/2"
US-50	163	94.5	176	223	2"

订货举例 How to Order?

HUS -- 10 -- T -- E2 -- 15L

HUS不锈钢系列 HUS SS series

接管口径 Port size  
10: 3/8"  
15: 1/2"  
20: 3/4"  
25: 1"  
35: 1-1/4"  
40: 1-1/2"  
50: 2"  
F: 法兰连接 Flange

密封材料 Seal material  
T: Teflon  
聚四氟乙烯 T: Teflon

电压 Voltage  
E1: AC110V  
E2: AC220V  
E4: DC24V

流量孔径 Orifice(mm)  
15L= 15.0  
20L= 20.0  
25L= 25.0  
32L= 32.0  
35L= 35.0  
40L= 40.0  
50L= 50.0

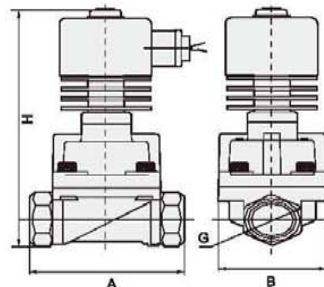
如孔径与口径一致, 型号中流量标识省略  
Cancel if same with port size

- HUS不锈钢系列, 二位三通, 接管口径3/8", 聚四氟乙烯密封件, AC110V, 流量孔径 15mm, 不锈钢阀体304, 常闭, 型号: HUS10TE1-15LS2
- HUS SS series, 2 port, 2 position, 3/8" port size, teflon seal, AC110V, orifice: 15mm, stainless steel 304 valve body, normal close, model: HUS10TE1-15LS2

产品特性 Product Features

- 两位三通常闭型电磁阀, 不锈钢304阀体
- 接管口径从3/8"到2"
- 有螺纹连接和法兰连接可供选择
- 活塞先导式电磁阀, 耐高温高压
- Normal close, SS304 body
- Sizes range from 3/8" to 2"
- Available both thread and flange connection
- Piston pilot solenoid valve with high working pressure and temperature

外形尺寸图 Main Dimensions (mm)



规格 Specifications

接管口径 (G) Port size	流量系数 CV value	最小压力 Min. pressure	压力差 Pressure difference (Bar)		最大工作温度 Max. temperature (°C)	打货型号 Model 220VAC 50/60HZ	外形尺寸 Main dimension 长度 X 高度 X 孔径 Length X H X Ax/Bx	
			导热油 Oil	蒸汽 Steam				
3/8"	15	4.5	0.5	16	16	250	HUS10TE2-15LS2	75 x 52
1/2"	15	4.5	0.5	16	16	250	HUS-15TE2S2	75 x 52
3/4"	20	8.0	0.5	16	16	250	HUS-20TE2S2	85 x 60
1"	25	12	0.5	16	16	250	HUS-25TE2S2	100 x 70
1-1/4"	35	22	0.5	16	16	250	HUS-35TE2S2	120 x 90
1-1/2"	35	22	0.5	16	16	250	HUS40TE2-35LS2	120 x 90
2"	50	45	0.5	16	16	250	HUS-50TE2S2	150 x 110
法兰 4孔 Flange 4 Port	25	12	0.5	16	16	250	HUSFTE2-25LS2	134 x 111
	32	22	0.5	16	16	250	HUSFTE2-32LS2	160 x 133
	40	22	0.5	16	16	250	HUSFTE2-40LS2	160 x 141
	50	45	0.5	16	16	250	HUSFTE2-50LS2	200 x 151