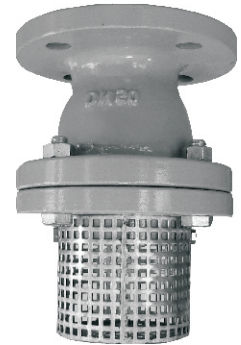
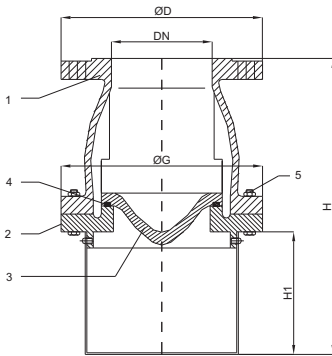


Materials : Figur 135



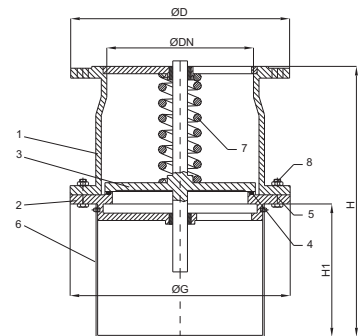
No	Part Name	GG 25
1	Body	GG 25
2	Bonnet	GG 25
3	Disc	GG 25
4	O-ring	NBR
5	Bolt&Nut	8.8
6	Screen	X2CrNiMo 18 10
7	Spring	Galvanized Steel



DN 25 - DN 150
Figur 135

*Application:
Fresh water, sea water, oil and other liquids.

- * Flanged ends acc.to DIN PN 10/16
- * Max. working temperature up to 80 °C
- * Dimension range : DN 25 - DN 300



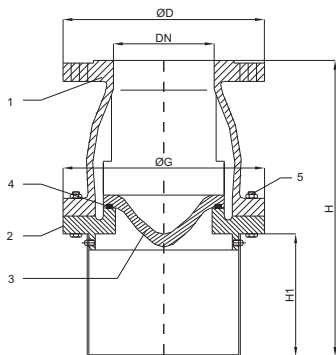
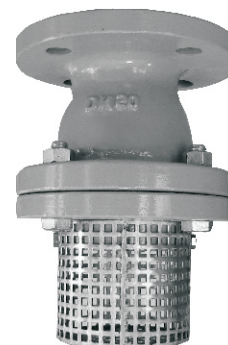
DN 200 - DN 300
Figur 135

PN	DN	25	32	40	50	65	80	100	125	150	200	250	300
	H	150	150	212	212	260	287	316	335	415	500	625	785
	H1	60	60	80	80	100	115	119	119	160	183	238	328
10	ØD	115	140	150	165	185	200	220	250	285	340	395	445
16	ØD	115	140	150	165	185	200	220	250	285	340	405	460
	ØG	125	125	155	155	210	210	220	250	285	340	420	490
KG 135		5	6	8	10	14	16.5	18.5	26.5	37.5	63	100	150



Materials : Figur 171

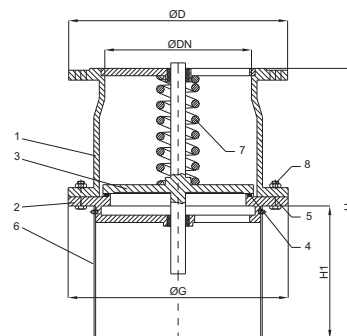
No	Part Name	GGG 40.3
1	Body	GGG 40.3
2	Bonnet	GGG 40.3
3	Disc	GGG 40.3
4	O-ring	NBR
5	Bolt&Nut	8.8
6	Screen	X2CrNiMo 18 10
7	Spring	Galvanized Steel



DN 25 - DN 150
Figur 171

*Application:
Fresh water, sea water, oil and other liquids.

- * Flanged ends acc.to DIN PN 10/16
- * Max. working temperature up to 80 °C
- * Dimension range : DN 25 - DN 300

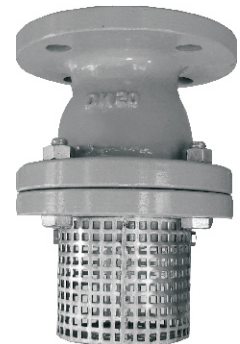


DN 200 - DN 300
Figur 171

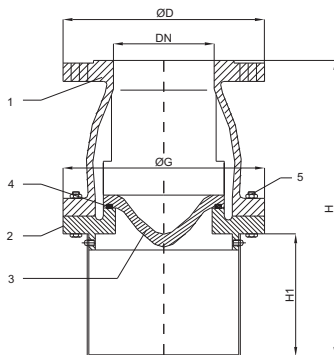
PN	DN	25	32	40	50	65	80	100	125	150	200	250	300
	H	150	150	212	212	260	287	316	335	415	500	625	785
	H1	60	60	80	80	100	115	119	119	160	183	238	328
10	ØD	115	140	150	165	185	200	220	250	285	340	395	445
16	ØD	115	140	150	165	185	200	220	250	285	340	405	460
	ØG	125	125	155	155	210	210	220	250	285	340	420	490
KG 171		5	6	8	10	14	16.5	18.5	26.5	37.5	63	100	150



Materials : Figur 172



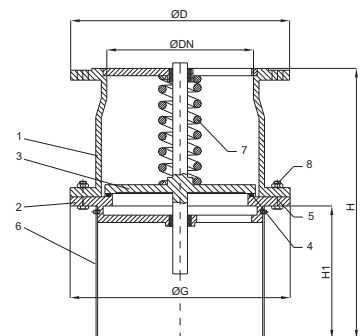
No	Part Name	Bronze (Rg 5)
1	Body	G-CuSn5ZnPb
2	Bonnet	G-CuSn5ZnPb
3	Disc	G-CuSn5ZnPb
4	O-ring	NBR
5	Bolt&Nut	A2 304
6	Screen	X2CrNiMo 18 10
7	Spring	Galvanized Steel



DN 25 - DN 150
Figur 172

*Application:
Fresh water, sea water, oil and other liquids.

- * Flanged ends acc.to DIN PN 10/16
- * Max. working temperature up to 80 °C
- * Dimension rading : DN 25 - DN 300



DN 200 - DN 300
Figur 172

PN	DN	25	32	40	50	65	80	100	125	150	200	250	300
	H	150	150	212	212	260	287	316	335	415	500	625	785
	H1	60	60	80	80	100	115	119	119	160	183	238	328
10	ØD	115	140	150	165	185	200	220	250	285	340	395	445
16	ØD	115	140	150	165	185	200	220	250	285	340	405	460
	ØG	125	125	155	155	210	210	220	250	285	340	420	490
KG 172		5.7	6.8	9.2	11.4	16	18.8	21	30	42.8	71.8	114	170

