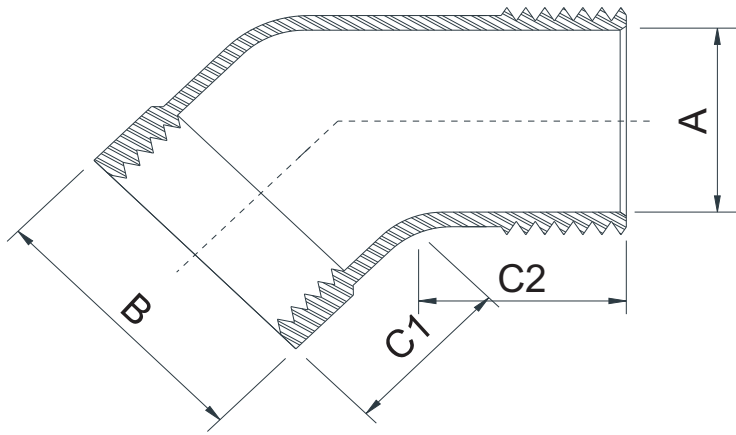


# CLASS 150



## ELBOW 45° M.F.

No.	Size	A	B	C1	C2	Weight (Kg/Pc)
		(mm)	(mm)	(mm)	(mm)	
1.	1/8"	4.0	13.0	15.0	15.5	0.02
2.	1/4"	6.4	16.0	16.0	16.5	0.03
3.	3/8"	9.0	19.0	18.0	18.5	0.04
4.	1/2"	13.0	26.5	18.5	20.0	0.07
5.	3/4"	18.0	32.3	23.5	22.5	0.11
6.	1"	24.0	40.0	27.0	26.5	0.18
7.	1 1/4"	30.5	49.3	31.0	28.0	0.24
8.	1 1/2"	35.8	56.0	34.0	27.0	0.35
9.	2"	46.4	68.3	37.5	31.0	0.57
10.	2 1/2"	66.0	90.0	48.0	43.0	0.88
11.	3"	77.0	100.0	52.0	46.0	1.16
12.	4"	103.0	127.0	55.0	52.0	1.94