

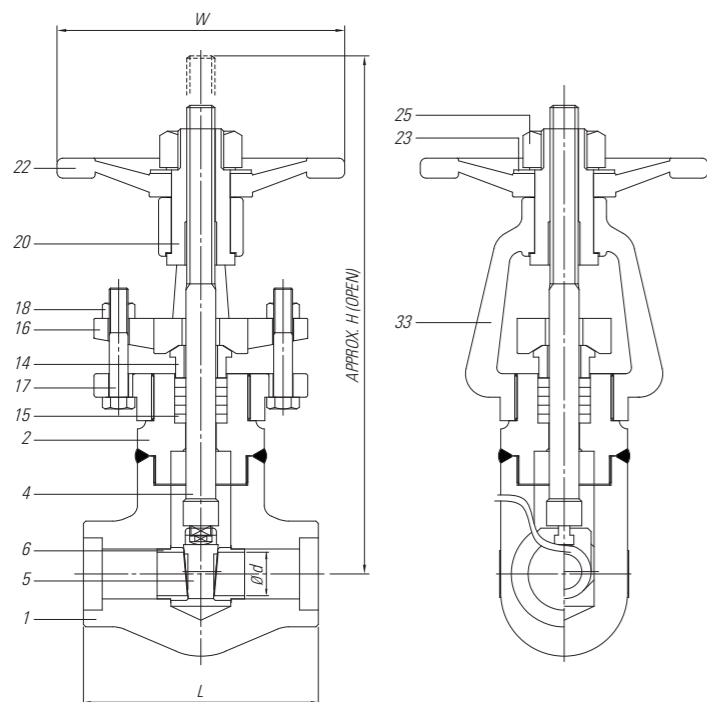
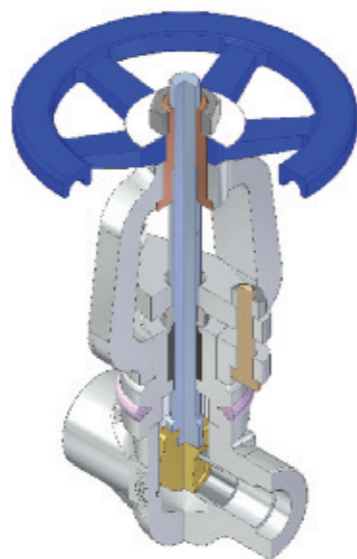
FORGED STEEL GATE VALVE

YOKE TYPE WELDED BONNET, OS & Y

CLASS 1500 & 2500

Model No. TB1F-01

- End Connection : SW, NPT, BW, NIPPLES, FLANGED (Class 150 ~ 2500 See page 49 for 'L')
- Feature : Welded Bonnet
- Design : ASME B16.34



DIMENSIONS (unit: mm)

CLASS	SIZE	L	Approx. H	W	Ø d	Approx. Weight(kg)
1500	1/2"	15A	96	233	165	13
	3/4"	20A	121	245	165	19
	1"	25A	141	300	200	25
	1 1/4"	32A	161	331	200	30
	1 1/2"	40A	172	355	200	37
	2"	50A	200	439	245	37
2500	1/2"	15A	121	245	165	11.5
	3/4"	20A	141	300	200	11.5
	1"	25A	161	331	200	17
	1 1/4"	32A	172	355	200	25
	1 1/2"	40A	200	439	245	30
	2"	50A	220	486	350	37

BILL OF MATERIALS

No.	PART NAME	MATERIAL						
1	Body	A105	A182-F11/F22	A350-LF2	A182-F304	A182-F304L	A182-F316	A182-F316L
2	Bonnet	A105	A182-F11/F22	A350-LF2	A182-F304	A182-F304L	A182-F316	A182-F316L
4	Stem	A276/A479-410		A276-304	A276-316			
5	Disc	A217-CA15		A351-CF8	A351-CF8M			
7	Seat Ring	A276/A479-410		A276-304	A276-316			
14	Gland	A276-304						
15	Gland Packing	GRAPHITE						
16	Gland Flange	A105	A182-F304					
17	Gland Bolt	A193-B7	A193-B8					
18	Gland Bolt Nut	A194-2H	A194-8					
20	Sleeve	HIGH-TENSION BRASS						
22	Hand Wheel	A197						
23	Name Plate	ALUMINUM						
25	Hand Wheel Nut	SS400+Zn PLATE						
33	Yoke	A216-WCB	A351-CF8					

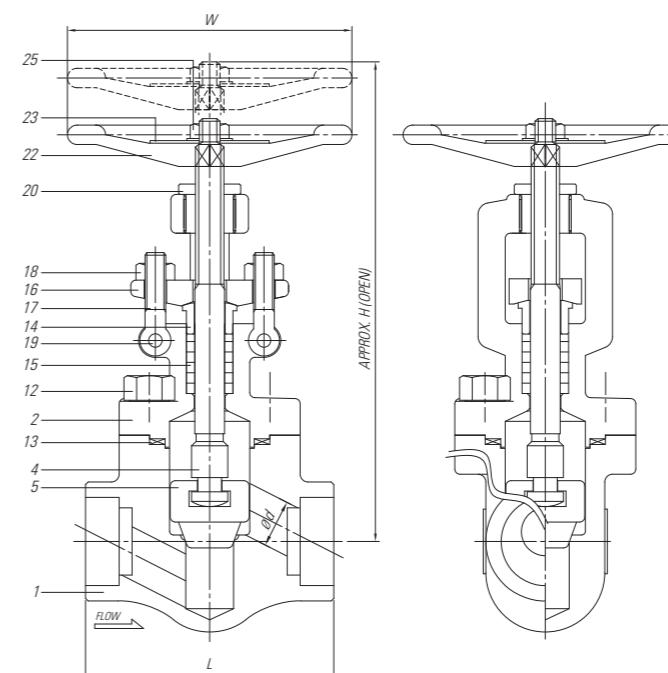
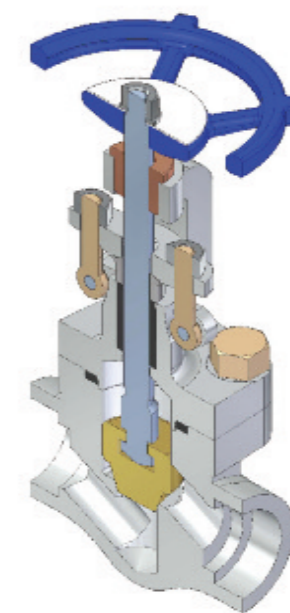
FORGED STEEL GLOBE VALVE

BOLTED BONNET, OS & Y

CLASS 800 & 600 & 1500

Model No. GA1D-01

- End Connection : SW, NPT, BW, NIPPLES, FLANGED (Class 150 ~ 2500 See page 49 for 'L')
- Feature : Bolted or Welded Bonnet
- Design : API 602, ASME B16.34 (for CLASS 600)



DIMENSIONS (unit: mm)

CLASS	SIZE	L	Approx. H	W	Ø d	Approx. Weight(kg)
800	1/2"	15A	73	134	90	9.5
	3/4"	20A	87	146	90	12.5
	1"	25A	96	177	105	18.5
	1 1/4"	32A	121	205	125	24
	1 1/2"	40A	141	215	125	29
	2"	50A	161	248	150	35
600	1/2"	15A	79	155	100	10
	3/4"	20A	92	155	100	13
	1"	25A	111	197	125	17.5
	1 1/4"	32A	130	218	155	24
	1 1/2"	40A	152	256	155	31
	2"	50A	172	276	180	37
1500	1/2"	15A	96	177	105	9.5
	3/4"	20A	96	177	105	12.5
	1"	25A	121	205	125	18.5
	1 1/4"	32A	141	215	125	25
	1 1/2"	40A	161	248	150	28
	2"	50A	172	276	165	35

BILL OF MATERIALS

No.	PART NAME	MATERIAL						
1	Body	A105	A182-F11/F22	A350-LF2	A182-F304	A182-F304L	A182-F316	A182-F316L
2	Bonnet	A105	A182-F11/F22	A350-LF2	A182-F304	A182-F304L	A182-F316	A182-F316L
4	Stem	A276/A479-410		A276-304	A276-316			
5	Disc	A217-CA15/A743-CA40		A351-CF8	A351-CF8M			
12	Bonnet Bolt	A193-B7	A193-B16	A320-L7	A193-B8			
13	Gasket	304SS+GRAPHITE			316SS+GRAPHITE			
14	Gland	A276-304						
15	Gland Packing	GRAPHITE						
16	Gland Flange	A105	A182-F304					
17	Gland Bolt	A193-B7	A193-B8					
18	Gland Bolt Nut	A194-2H	A194-8					
19	Gland Bolt Pin	A276-304						
20	Sleeve	A479-410						
22	Hand Wheel	A197						
23	Name Plate	ALUMINUM						
25	Hand Wheel Nut	A307-B						