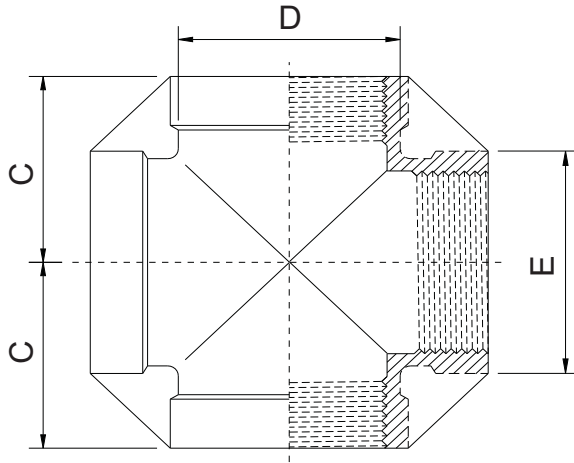


CLASS 150



CROSS

No.	Size	C		D		E		Weight (Kg / Pc)
		Inch	(mm)	Inch	(mm)	Inch	(mm)	
1.	1/8"	0.67	17.0	0.51	12.90	0.56	14.20	0.04
2.	1/4"	0.75	19.0	0.62	15.80	0.68	17.30	0.05
3.	3/8"	0.84	21.5	0.75	19.00	0.82	20.85	0.06
4.	1/2"	1.06	27.0	0.90	24.70	1.06	26.80	0.11
5.	3/4"	1.23	31.2	1.19	30.30	1.27	32.30	0.17
6.	1"	1.43	36.2	1.50	38.10	1.57	39.80	0.26
7.	1 1/4"	1.71	43.5	1.80	45.70	1.93	49.00	0.40
8.	1 1/2"	1.79	45.4	2.09	53.00	2.20	55.80	0.54
9.	2"	2.22	56.5	2.60	65.00	2.68	68.00	0.83
10.	2 1/2"	2.67	67.9	3.37	85.50	3.54	90.00	1.86
11.	3"	2.95	75.0	3.77	95.70	3.94	100.00	2.03
12.	4"	3.58	90.9	4.82	122.50	5.00	127.00	3.40