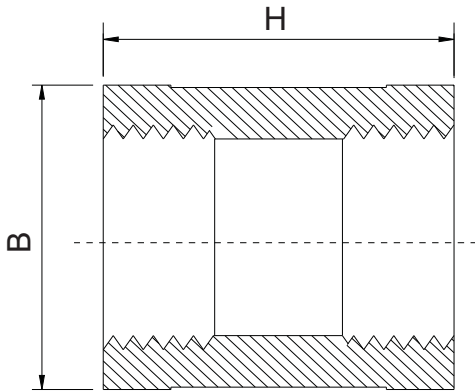


**CLASS  
150**



## BANDED COUPLING

No.	Size	B	H	Weight
		(mm)	(mm)	(Kg/Pc)
1.	1/2"	26.40	35.00	0.05
2.	3/4"	32.30	38.00	0.07
3.	1"	39.80	41.60	0.12
4.	1 1/4"	49.00	50.30	0.17
5.	1 1/2"	55.80	53.40	0.25
6.	2"	68.00	63.70	0.37